

# Global stability analysis of flexible channel flow with a hyperelastic wall

M.A. Herrada<sup>1</sup>, S. Blanco-Trejo<sup>1</sup>, J. Eggers<sup>2</sup> and P.S. Stewart<sup>3,†</sup>

<sup>1</sup>E.S.I., Universidad de Sevilla, Camino de los Descubrimientos s/n, 41092, Spain

<sup>2</sup>School of Mathematics, University of Bristol, Fry Building, Bristol BS8 1UG, UK

<sup>3</sup>School of Mathematics and Statistics, University of Glasgow, Mathematics and Statistics Building, University Place, Glasgow G12 8QQ, UK

(Received 29 January 2021; revised 20 October 2021; accepted 12 December 2021)

We consider the stability of flux-driven flow through a long planar rigid channel, where a segment of one wall is replaced by a pre-tensioned hyperelastic (neo-Hookean) solid of finite thickness and subject to a uniform external pressure. We construct the steady configuration of the nonlinear system using Newton's method with spectral collocation and high-order finite differences. In agreement with previous studies, which use an asymptotically thin wall, we show that the thick-walled system always has at least one stable steady configuration, while for large Reynolds numbers the system exhibits three co-existing steady states for a range of external pressures. Two of these steady configurations are stable to non-oscillatory perturbations, one where the flexible wall is inflated (the upper branch) and one where the flexible wall is collapsed (the lower branch), connected by an unstable intermediate branch. We test the stability of these steady configurations to oscillatory perturbations using both a global eigensolver (constructed based on an analytical domain mapping technique) and also fully nonlinear simulations. We find that both the lower and upper branches of steady solutions can become unstable to self-excited oscillations, where the oscillating wall profile has two extrema. In the absence of wall inertia, increasing wall thickness partially stabilises the onset of oscillations, but the effect remains weak until the wall thickness becomes comparable to the width of the undeformed channel. However, with finite wall inertia and a relatively thick wall, higher-frequency modes of oscillation dominate the primary global instability for large Reynolds numbers.

**Key words:** flow-vessel interactions

† Email address for correspondence: [peter.stewart@glasgow.ac.uk](mailto:peter.stewart@glasgow.ac.uk)

## 1. Introduction

Human physiology includes a wide number of examples of fluid flow through flexible-walled conduits including blood flow through the circulation (from rapid flow in the heart and large arteries to slow viscous flows through the capillaries), air flow through the lungs and upper airways, urine flows in the excretory system and peristaltic flows through the colon. In some circumstances these flows can exhibit instability, where the flow can interact with the flexible wall in a non-trivial way. Of particular interest in this study is the onset of self-excited oscillations, where the flow and the wall can spontaneously transition to an oscillatory limit cycle; in some cases this oscillation can even become chaotic. These oscillations manifest in physiological problems such as blood pressure measurement in the form of audible Korotkoff noises (Bertram, Raymond & Butcher 1989), and wheezing in the lung airways (Gavriely *et al.* 1989).

Self-excited oscillations in flexible-walled vessels can be studied experimentally using a Starling resistor, a deceptively simple device featuring liquid flow driven through a section of externally pressurised flexible tubing mounted between two rigid pipes. Originally used as a flow resistor in cardiac experiments (Knowlton & Starling 1912), it has since become a canonical experiment for investigating fluid–structure interaction in its own right. In these experiments flow is driven using either a prescribed pressure or a prescribed flow rate, and the choice of set-up heavily influences the structure of the resulting oscillations. Results from the experiments are well summarised elsewhere (e.g. Bertram 2003; Grotberg & Jensen 2004; Heil & Hazel 2011), but we note that these self-excited oscillations occur in distinct frequency bands (Bertram, Raymond & Pedley 1990), and exhibit complicated nonlinear limit cycles which can be characterised using the methods of dynamical systems (Bertram, Raymond & Pedley 1991). Note that these experiments are typically conducted with relatively thick-walled tubes. For example, Bertram *et al.* (1990, 1991) used tubes of wall thickness to baseline radius ratio of 0.3, while Bertram & Castles (1999) used tubes with a thickness to radius ratio of 0.37.

There have been a number of theoretical studies of the Starling resistor set-up in an attempt to explain the underlying mechanisms leading to these different families of oscillation. Formulation of the full three-dimensional fluid structure interaction problem in a collapsible tube involves coupling unsteady Newtonian flow to a fully deformable elastic tube. While most theoretical models treat the tube wall as a thin shell, slightly reducing the complexity of the system, these models still require vast computational resources to resolve the unsteady oscillatory flow (Heil & Boyle 2010). Some analytical progress can be made in the limit of large membrane tension (where oscillations are high frequency, Whittaker *et al.* 2010), but this formulation is restricted to a state where the tube wall is almost uniform that has not yet been realised experimentally.

The flexible tubing used in Starling resistor experiments is typically much thicker than is appropriate to model using thin shell theory. To date, the only theoretical studies which incorporate a thick-walled tube have been restricted to steady flow configurations (Marzo, Luo & Bertram 2005; Zhang, Luo & Cai 2018). In this paper we seek to address the stability of flow in a Starling resistor analogue with a thick hyperelastic wall, and investigate the role of wall thickness in promoting or inhibiting instability.

Given the computational difficulty and expense of full three-dimensional unsteady models, theoretical study has often focused on empirical lumped parameter or cross-sectionally averaged models for flow in collapsible tubes (e.g. Shapiro 1977; Bertram & Pedley 1982; Jensen 1990; Armitstead, Bertram & Jensen 1996), which have replicated many of the features noted in Starling resistor experiments, such as non-uniform steady profiles and spontaneous transition to self-excited oscillations in distinct

oscillation frequencies. However, the flow field in these models is still approximate and misses many of the subtleties of flow separation and energy dissipation.

To make progress in understanding the mechanisms of instability driving self-excited oscillations, a compromise system is needed which is less complicated than fully three-dimensional flow, but reduces the number of empirical assumptions needed for the lumped models. Pedley (1992) proposed a two-dimensional analogue of the Starling resistor, consisting of a planar rigid channel where a section of one wall has been replaced by a flexible sheet. This set-up has since become the subject of a wide variety of computational (e.g. Luo & Pedley 1995, 1996, 1998, 2000; Heil 2004) and theoretical studies (e.g. Jensen & Heil 2003; Guneratne & Pedley 2006; Stewart *et al.* 2010; Pihler-Puzović & Pedley 2013). Despite reduced computational cost compared with the three-dimensional tube system, a full exploration of the parameter space for this collapsible channel analogue has not yet been attempted, although progress toward quantifying the mechanisms of instability has been made in various regions of the parameter space. For example, in the case of prescribed upstream flux (the subject of this study), Xu, Billingham & Jensen (2014) quantified the mechanism driving ‘sawtooth’ oscillations in the asymptotic limit of a long downstream rigid section, where the nonlinear oscillation is driven by the resonance of two distinct modes of perturbation (mode-1 and mode-2) of similar frequency and the same wavelength, coupled by sloshing flow in the downstream rigid section. Furthermore, Huang (2001) simplified the flux-driven collapsible channel system by imposing an external pressure gradient on the flexible wall, which facilitated decomposition of the oscillatory flow into a sum of sinusoidal modes. This analysis reveals an alternative mechanism of oscillatory instability, driven by an imbalance between (unstable) downstream propagating waves (which transfer energy from the flow to the wall) and (stable) upstream propagating waves (which transfer energy back from the wall to the fluid).

Further insights into the mechanisms of instability in these collapsible channel flows have been obtained using approximate one-dimensional models of the asymmetric channel system (derived using a flow-profile assumption, Stewart, Waters & Jensen 2009; Stewart *et al.* 2010; Xu, Billingham & Jensen 2013; Xu *et al.* 2014; Xu & Jensen 2015; Stewart 2017). In particular, a detailed exploration of the parameter space for flux-driven oscillations with constant external pressure was presented by Stewart (2017), where he found that when the fluid is inviscid, steady states only exist above a critical value of the membrane tension (for all other parameters held fixed), with a stable branch and an unstable branch (where the unstable branch is more collapsed than the stable branch). This critical point appears to be an organising centre of the dynamical system, in that many of the unsteady features of the system originate close to this point (such as the neutral curves for the two different families of self-excited oscillations). The importance of the critical point for inviscid steady states has previously been elucidated by Xu *et al.* (2013), who used an external pressure gradient. Stewart (2017) also described another branch of steady solutions maintained by viscous effects, which becomes increasingly collapsed as the wall tension is reduced. As the Reynolds number increases this viscous branch of steady solutions merges with one of the (essentially) inviscid branches. When the viscous branch merges smoothly with the stable inviscid branch then the stable steady state is unique. However, the other possibility is that the viscous branch merges with the unstable inviscid branch in a limit point bifurcation, where the system then exhibits three co-existing steady states across a narrow region of the parameter space: the stable inviscid solutions become the upper branch, the unstable inviscid solutions become the intermediate branch and the stable viscous solutions become the lower branch.

Stewart (2017) also showed that the lower branch of steady solutions can become unstable to two distinct families of self-excited oscillation, with high and low frequency, respectively. However, in addition to the flow-profile assumption, this study considered the flexible wall to be a thin (massless) pre-stressed membrane with no bending rigidity. To overcome these simplifications, this study revisits the predictions of Stewart (2017) by modelling the flexible wall as a pre-tensioned hyperelastic solid, using the finite element method to compute the fully two-dimensional steady wall and flow profiles, and test their stability to time-dependent perturbations using a fully two-dimensional eigensolver. Our new model includes the wall thickness and wall mass as explicit parameters, and we investigate their influence on the predictions below.

Another approach for theoretical modelling of this collapsible channel system has very recently been presented by Wang, Luo & Stewart (2021*a,b*), who treat the flexible wall as an asymptotically thin beam with resistance to both bending and stretching but with no pre-tension (based on an earlier model by Cai & Luo 2003; Luo *et al.* 2008). Using fully nonlinear simulations of this model, they identified a similar three-branch steady system for some parameters, showing that both the upper and lower branches of oscillation could (independently) become unstable to self-excited oscillations (Wang *et al.* 2021*a*) and these families of oscillations could merge together for low external pressures (Wang *et al.* 2021*b*). In this case the upper branch instability is restricted to a region in the near neighbourhood of that which exhibits multiple steady states (Wang *et al.* 2021*b*). In this study we also isolate a family of upper branch instabilities, but show that these are not limited to the region with multiple steady states but are instead unstable well away from the region of parameter space which exhibits instabilities of the lower steady branch (see § 3.4 below).

The role of wall mass in the onset of self-excited oscillations in flexible-walled vessels has already been considered for the flexible wall modelled as a thin membrane. For example, in the asymmetric channel system, Luo & Pedley (1998) coupled the heavy membrane to fully two-dimensional (unsteady) flow, showing that increasing the wall mass expands the region of parameter space where the system exhibits the primary global instability, and also results in an additional high-frequency oscillatory mode (superimposed on the fundamental mode) which eventually grows to dominate the lower-frequency mode. Also, Pihler-Puzović & Pedley (2014) investigated this channel system using interactive boundary layer theory, showing that wall mass drives an oscillatory instability which is always unstable in the presence of a cross-stream pressure gradient across the core flow (the system is always neutrally stable with no cross-stream gradient). Finally, Walters, Heil & Whittaker (2018) considered the role of wall mass in a thin shell model of flow in a collapsible tube in the limit of large pre-stress (where the tube is almost uniform), finding that wall inertia destabilises the primary mode of instability of the system while also lowering the corresponding oscillation frequency.

In this paper we consider the planar channel analogue of the Starling resistor introduced by Pedley (1992), and propose a new numerical method to solve the combined fluid and solid problem based on that developed by Snoeijer *et al.* (2020) (which already has application to viscoelastic fluids, Eggers, Herrada & Snoeijer 2020). The model formulation is described in § 2, highlighting the novel features of the numerical method. In particular, we treat the elastic solid as a pre-tensioned hyperelastic material of uniform initial thickness with non-negligible density and subject to a uniform external pressure. We validate this numerical method against the steady predictions of Heil (2004), who considered an identical set-up with a thin shell model for the wall (§ 3.1), use unsteady simulations to examine the transition between the upper and lower branches of steady solutions (§ 3.2), examine the onset of self-excited oscillations from these steady solutions

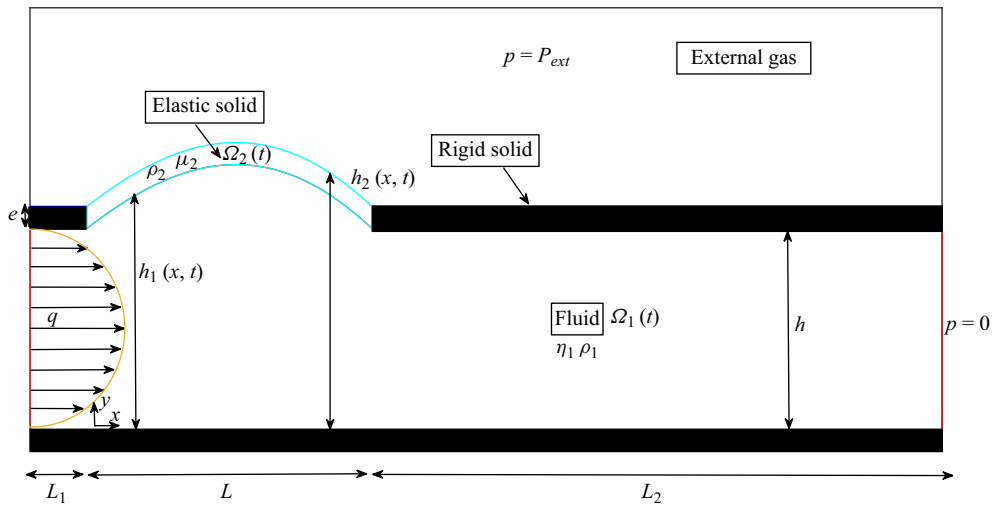


Figure 1. Sketch of the flow geometry considered in this study.

(§ 3.3), before using our new model to examine the role of membrane pre-tension (§ 3.4), the dynamics of oscillations growing from the upper branch of steady solutions (§ 3.5) as well as the role of wall thickness (§ 3.6) and wall inertia (§ 3.7) on the nonlinear steady solutions and the accompanying onset of oscillation.

## 2. Model formulation

We consider the configuration sketched in figure 1, where an incompressible Newtonian fluid is flowing through a planar rigid (two-dimensional) channel of uniform internal width  $h$ . An interior section of length  $L$  is removed from the upper wall of the channel and replaced by a pre-tensioned elastic solid of (initially) uniform thickness  $e$ , subject to a passive external gas at uniform pressure,  $P_{ext}$ . This elastic wall can be deformed by the load of the external gas and by the fluid traction. The rigid sections upstream and downstream of the compliant segment are of length  $L_1$  and  $L_2$ , respectively. In this case the flow is driven by a prescribed upstream flux  $q$ , while the fluid pressure at the downstream end of the channel can be set to zero without loss of generality. The stability of this fluid–structure interaction problem has already been studied extensively using reduced models for the elastic wall (e.g. Luo & Pedley 1996; Jensen & Heil 2003; Luo *et al.* 2008; Stewart 2017). In this work, we model the wall as a continuum hyperelastic solid of finite thickness, with no simplifications or reductions. Our formulation is based on first-order elasticity (elastic strain energy function dependent on the strain tensor), which places some restrictions on the boundary conditions that can be imposed.

### 2.1. Equations of motion

The fluid domain  $\Omega_1$  is described by the planar coordinates  $\mathbf{x} = xe_x + ye_y$ , where  $x$  parametrises the lower wall of the channel, with  $x = 0$  at the intersection between the upstream rigid segment and the compliant segment, while  $y$  parametrises the direction normal to the entirely rigid wall pointing into the fluid (in the plane of the channel). The solid domain  $\Omega_2$  is measured relative to a reference configuration parametrised by the



coordinates  $\mathbf{X} = X\mathbf{e}_x + Y\mathbf{e}_y$ , where  $X$  parametrises the lower surface of the flat wall and  $Y$  parametrises the direction pointing into the wall (in the plane of the channel).

The conservation of mass and momentum equations in the fluid ( $i = 1$ ) and solid ( $i = 2$ ) subdomains are given by

$$\nabla \cdot \mathbf{v}_i = 0, \quad (i = 1, 2), \tag{2.1a}$$

$$\rho_i \left( \frac{\partial \mathbf{v}_i}{\partial t} + (\mathbf{v}_i \cdot \nabla) \mathbf{v}_i \right) = \nabla \cdot \boldsymbol{\sigma}_i, \quad (i = 1, 2), \tag{2.1b}$$

where  $\rho_i$  is the density,  $\mathbf{I}$  is the identity tensor,  $\mathbf{v}_i$  the velocity field and  $\boldsymbol{\sigma}_i$  is the stress tensor of material  $i$  ( $i = 1, 2$ ). Each stress tensor depends on the characteristics of the material through a constitutive model. In region 1 we consider an incompressible Newtonian fluid, where this stress tensor takes the form

$$\boldsymbol{\sigma}_1 = -p_1\mathbf{I} + \eta_1 (\nabla \mathbf{v}_1 + \nabla \mathbf{v}_1^T), \tag{2.1c}$$

where  $p_1$  is the fluid pressure and  $\eta_1$  is the fluid viscosity. In region 2 we consider a neo-Hookean (hyperelastic) solid which has a pre-stress,  $\boldsymbol{\sigma}_{2p}^{(0)}$ , in the initial undeformed state, where the stress tensor is given by (Snoeijer *et al.* 2020)

$$\boldsymbol{\sigma}_2 = -p_2\mathbf{I} + \mu_2 (\mathbf{F} \cdot \mathbf{F}^T - \mathbf{I}) + \mathbf{F} \cdot \boldsymbol{\sigma}_{2p}^{(0)} \cdot \mathbf{F}^T, \tag{2.1d}$$

where  $p_2$  is the solid pressure,  $\mu_2$  is the elastic shear modulus,  $\mathbf{x}(X, t)$  is the position of a material point after deformation of the solid and  $\mathbf{F} = \partial \mathbf{x} / \partial \mathbf{X}$  is the deformation gradient tensor. In the initial state,  $\mathbf{x} = \mathbf{X}$  and  $\mathbf{F} \cdot \mathbf{F}^T = \mathbf{I}$ . To make a connection between the Eulerian formulation for the conservation of mass and momentum equations for the solid ((2.1) with  $i = 2$ ) and the Lagrangian formulation for the elastic stress, we need to determine the deformation generated by transport by the solid velocity  $\mathbf{v}_2$ . This is achieved using the inverse Lagrangian map  $\mathbf{X}(\mathbf{x}, t)$  (Kamrin, Rycroft & Nave 2012), which satisfies

$$\frac{\partial \mathbf{X}}{\partial t} + \mathbf{v}_2 \cdot \nabla \mathbf{X} = 0, \tag{2.1e}$$

because the reference coordinates are invariant under the flow.

Given the bi-dimensionality of the problem, the material points can be expressed in Cartesian coordinates and so the velocity vectors can be written as

$$\mathbf{v}_i = v_{yi}\mathbf{e}_y + v_{xi}\mathbf{e}_x, \quad (i = 1, 2), \tag{2.1f}$$

while the stress tensors can be written as

$$\boldsymbol{\sigma} = \sigma_{yy}\mathbf{e}_y \otimes \mathbf{e}_y + \sigma_{yx}\mathbf{e}_y \otimes \mathbf{e}_x + \sigma_{xy}\mathbf{e}_x \otimes \mathbf{e}_y + \sigma_{xx}\mathbf{e}_x \otimes \mathbf{e}_x, \tag{2.1g}$$

and finally the deformation tensor in the solid can be written as

$$\mathbf{F} = \frac{\partial y}{\partial Y}\mathbf{e}_y \otimes \mathbf{e}_y + \frac{\partial y}{\partial X}\mathbf{e}_y \otimes \mathbf{e}_x + \frac{\partial x}{\partial Y}\mathbf{e}_x \otimes \mathbf{e}_y + \frac{\partial x}{\partial X}\mathbf{e}_x \otimes \mathbf{e}_x. \tag{2.1h}$$

In the undeformed position the elastic solid is subject to an initial longitudinal tension,  $T_0$ , and therefore the initial stress is  $\boldsymbol{\sigma}_{2p}^{(0)} = (T_0/e)\mathbf{e}_x \otimes \mathbf{e}_x$ .

*Flexible channel flow with a hyperelastic wall*

For the elastic domain, it is convenient to replace the incompressibility equation based on the velocity field ((2.1a) with  $i = 2$ ) by a constraint involving the deformation tensor  $\mathbf{F}$  (Snoeijer *et al.* 2020) in the form

$$\det(\mathbf{F}) = \left( \frac{\partial y}{\partial Y} \frac{\partial x}{\partial X} - \frac{\partial y}{\partial X} \frac{\partial x}{\partial Y} \right) = 1. \quad (2.1i)$$

To impose the upstream flux boundary condition for the liquid, we impose a Poiseuille profile at the channel entrance,  $x = -L_1$ , in the form

$$v_{1x} = \frac{6q}{h^3} y(h - y), \quad v_{1y} = 0, \quad (x = -L_1, 0 \leq y \leq h). \quad (2.1j)$$

At the channel exit,  $x = L + L_2$ , we impose zero fluid pressure,  $p_1 = 0$ . Along the entirely rigid wall we apply no-slip conditions in the form

$$v_{x1} = v_{y1} = 0, \quad (y = 0, -L_1 \leq x \leq L + L_2). \quad (2.1k)$$

Similarly, along the rigid parts of the upper wall we apply no-slip boundary conditions in the form

$$v_{x1} = v_{y1} = 0, \quad (y = h, -L_1 \leq x \leq 0, x \geq L). \quad (2.1l)$$

We assume that the flexible surface (where the elastic solid and the fluid interact) can be written as a function of  $x$  (i.e. the surface does not overturn or expand beyond the range  $0 \leq x \leq L$ ), so that  $y = h_1(x, t)$ . Across this interface we impose that the velocity field must be continuous, in the form

$$v_{x1} = v_{x2}, \quad v_{y1} = v_{y2}, \quad (y = h_1, 0 \leq x \leq L), \quad (2.1m)$$

and impose a balance of normal and tangential stresses between the solid and the fluid, in the form

$$\mathbf{n}_1 \cdot (\boldsymbol{\sigma}_1 - \boldsymbol{\sigma}_2) \cdot \mathbf{n}_1 = 0, \quad \mathbf{t}_1 \cdot (\boldsymbol{\sigma}_1 - \boldsymbol{\sigma}_2) \cdot \mathbf{n}_1 = 0, \quad (2.1n)$$

where

$$\mathbf{n}_1 = \frac{\mathbf{e}_y - \mathbf{e}_x h_{1,x}}{(1 + h_{1,x}^2)^{1/2}}, \quad \mathbf{t}_1 = \frac{\mathbf{e}_x + \mathbf{e}_y h_{1,x}}{(1 + h_{1,x}^2)^{1/2}}, \quad (2.1o)$$

are normal and tangential vectors to the surface  $y = h_1(x, t)$ , respectively, and the subscript  $x$  represents a derivative with respect to  $x$ . In this first-order elasticity approach we enforce no deformation along the surfaces where the elastic material is adhered to the rigid walls (i.e. the displacement of the solid is clamped along two edges of the rectangle in contact with the rigid walls), in the form

$$v_{2x} = v_{2y} = 0, \quad Y = y, \quad X = x, \quad (x = 0, x = L \text{ with } h \leq y \leq h + e). \quad (2.1p)$$

However, our approach does not replicate the resistance to bending of a classical Euler–Bernoulli beam. This would require second-order (or strain gradient) elasticity, where the elastic strain energy function is assumed to depend on both the strain tensor and the strain gradient tensor (Bertram & Forest 2020). In that case one must impose additional constraints on the contact between the beam and the rigid wall e.g. conditions on the derivatives of displacement, such as prescribed slope or torque. Finally, we denote

the external surface of the flexible wall as  $y = h_2(x, t)$ , ( $0 \leq x \leq L$ ) and impose that the normal and tangential elastic stresses are balanced with the external pressure, in the form

$$\mathbf{n}_2 \cdot (\boldsymbol{\sigma}_2 - P_{ext}\mathbf{I}) \cdot \mathbf{n}_2 = 0, \quad \mathbf{t}_2 \cdot (\boldsymbol{\sigma}_2) \cdot \mathbf{n}_2 = 0, \quad (2.1q)$$

where

$$\mathbf{n}_2 = \frac{\mathbf{e}_y - \mathbf{e}_x h_{2,x}}{(1 + h_{2,x}^2)^{1/2}}, \quad \mathbf{t}_2 = \frac{\mathbf{e}_x + \mathbf{e}_y h_{2,x}}{(1 + h_{2,x}^2)^{1/2}}, \quad (2.1r)$$

are normal and tangential vectors to the surface  $y = h_2(x, t)$ .

### 2.2. Mapping technique

The numerical technique used in this study is a variation of that developed by Herrada & Montanero (2016) for interfacial flows and extended by Snoeijer *et al.* (2020) to apply to hyperelastic solids. The spatial domain occupied by the fluid,  $\Omega_1(t)$ , is mapped onto a rectangular domain (parametrised by Cartesian coordinates  $\xi_1$  and  $\chi_1$ , where  $\xi_1$  parametrises the lower rigid wall and  $\chi_1$  parametrises the channel inlet) by means of a non-singular mapping

$$y = f_1(\xi_1, \chi_1, t), \quad x = g_1(\xi_1, \chi_1, t), \quad [-L_1 \leq \xi_1 \leq L + L_2] \times [0 \leq \chi_1 \leq 1], \quad (2.2)$$

where the shape functions  $f_1$  and  $g_1$  are obtained as part of the solution. In order to capture large anisotropic deformations, the following quasi-elliptic transformation (Dimakopoulos & Tsamopoulos 2003) was applied:

$$g_{22} \frac{\partial^2 f_1}{\partial \xi_1^2} + g_{11} \frac{\partial^2 f_1}{\partial \chi_1^2} - 2g_{12} \frac{\partial^2 f_1}{\partial \xi_1 \partial \chi_1} = Q, \quad (2.3a)$$

$$g_{22} \frac{\partial^2 g_1}{\partial \xi_1^2} + g_{11} \frac{\partial^2 g_1}{\partial \chi_1^2} - 2g_{12} \frac{\partial^2 g_1}{\partial \xi_1 \partial \chi_1} = 0, \quad (2.3b)$$

where the coefficients take the form

$$g_{11} = \left( \frac{\partial g_1}{\partial \xi_1} \right)^2 + \left( \frac{\partial f_1}{\partial \xi_1} \right)^2, \quad g_{22} = \left( \frac{\partial g_1}{\partial \chi_1} \right)^2 + \left( \frac{\partial f_1}{\partial \chi_1} \right)^2, \quad g_{12} = \frac{\partial g_1}{\partial \chi_1} \frac{\partial g_1}{\partial \xi_1} + \frac{\partial f_1}{\partial \chi_1} \frac{\partial f_1}{\partial \xi_1}, \quad (2.4a-c)$$

with

$$Q = - \left( \frac{\partial D_1}{\partial \chi_1} \frac{\partial f_1}{\partial \xi_1} - \frac{\partial D_1}{\partial \xi_1} \frac{\partial f_1}{\partial \chi_1} \right) \frac{J}{D_1}, \quad J = \frac{\partial g_1}{\partial \chi_1} \frac{\partial f_1}{\partial \xi_1} - \frac{\partial g_1}{\partial \xi_1} \frac{\partial f_1}{\partial \chi_1}, \quad (2.5a,b)$$

and

$$D_1 = \epsilon_p \sqrt{\left[ \left( \frac{\partial f_1}{\partial \xi_1} \right)^2 + \left( \frac{\partial g_1}{\partial \xi_1} \right)^2 \right] / \left[ \left( \frac{\partial f_1}{\partial \chi_1} \right)^2 + \left( \frac{\partial g_1}{\partial \chi_1} \right)^2 \right]} + (1 - \epsilon_p). \quad (2.6)$$

In the above expressions,  $\epsilon_p$  is a free parameter between 0 and 1 where the case  $\epsilon_p = 0$  corresponds to the classical elliptical transformation. All the simulations in this work were conducted using  $\epsilon_p = 0.2$ . Although there is no overturning in the wall profiles for the cases analysed in this work, this transformation of the liquid domain facilitates the analysis of more complicated geometries. For example, it has been successfully used to describe pinch-off in pendant drops (Ponce-Torres *et al.* 2020).



The spatial domain occupied by the elastic solid in the current stage,  $\Omega_2(t)$ , and in the initial stage,  $\Omega_{20}$ , are also mapped onto rectangular domains (parametrised by Cartesian coordinates  $\xi_2$  and  $\chi_2$ , where  $\xi_2$  parametrises the lower surface of the flexible wall and  $\chi_2$  parametrises the edges in contact with the rigid segments of the channel) by means of non-singular mappings in the form

$$\left. \begin{aligned} y &= f_2(\xi_2, \chi_2, t), & x &= g_2(\xi_2, \chi_2, t), \\ Y &= F_2(\xi_2, \chi_2, t), & X &= G_2(\xi_2, \chi_2, t), \end{aligned} \right\} [0 \leq \xi_2 \leq L] \times [0 \leq \chi_2 \leq 1], \quad (2.7)$$

where again the functions  $f_2$ ,  $g_2$ ,  $F_2$  and  $G_2$  should be obtained as a part of the solution. To determine these functions, the following equations have been used:

$$g_2 = \xi_2, \quad (2.8a)$$

$$F_2 = h + e\chi_2. \quad (2.8b)$$

Note that (2.8a) guarantees that the discretisation used for the variable  $\xi_2$  is automatically applied to variable  $x$ . Finally, (2.8b) indicates that at the initial stage the elastic part of the upper channel wall is a perfect rectangle of uniform width  $e$ .

Some additional boundary conditions for the shape functions are needed to close the problem. At the channel entrance, we impose

$$g_1 = -L_1, \quad f_1 = h\chi_1, \quad (x = \xi_1 = -L_1), \quad (2.9a)$$

while at the channel exit, we use

$$g_1 = L + L_2, \quad f_1 = h\chi_1, \quad (x = \xi_1 = L + L_2). \quad (2.9b)$$

On the lower wall, we impose

$$g_1 = \xi_1, \quad f_1 = 0, \quad (y = \chi_1 = 0), \quad (2.9c)$$

while on the rigid parts of the upper channel wall, we use

$$g_1 = \xi_1, \quad f_1 = h, \quad (-L_1 \leq x = \xi_1 \leq 0, x = \xi_1 \geq L, y = h). \quad (2.9d)$$

At the flexible surface, we also impose

$$f_1 = f_2, \quad g_1 = g_2, \quad (0 \leq x = \xi_1 = \xi_2 \leq L, y = h_1(x, t), \chi_1 = 1, \chi_2 = 0). \quad (2.9e)$$

Finally, we enforce no displacement of the elastic solid along the two edges of the rectangle in contact with the rigid walls, in the form

$$\left. \begin{aligned} g_2 &= G_2 = \xi_2, & f_2 &= F_2 = h + e\chi_2, \\ (x = \xi_2 = 0, x = \xi_2 = L, h \leq y \leq (h + e), 0 \leq \chi_2 \leq 1). \end{aligned} \right\} \quad (2.9f)$$

Figure 2 shows an example of the mappings used in this work. The green (magenta) lines represent the liquid (solid) mesh in the real space (bottom panel) and in the computational domain (top panel). The unknown variables in the liquid domain are  $f_1$ ,  $g_1$ ,  $p_1$ ,  $v_{1x}$  and  $v_{1y}$  while the unknown variables in the solid domain are  $f_2$ ,  $g_2$ ,  $p_2$ ,  $v_{2x}$ ,  $v_{2y}$ ,  $F_2$  and  $G_2$ . All the derivatives appearing in the governing equations are expressed in terms of  $\chi$ ,  $\xi$  and  $t$ . These mappings are applied to the governing equations (2.1) and the resulting equations are discretised in the  $\chi$ -direction with  $n_{\chi_1}$  and  $n_{\chi_2}$  Chebyshev spectral collocation points in the liquid and solid domains, respectively. Conversely, in the  $\xi$ -direction we use fourth-order finite differences with  $n_{\xi_1}$  and  $n_{\xi_2}$  equally spaced points in the liquid and solid domains, respectively. The results presented in this work were carried out using  $n_{\xi_1} = 641$ ,  $n_{\xi_2} = 201$ ,  $n_{\chi_1} = 19$  and  $n_{\chi_2} = 14$ . In the Appendix we demonstrate that the eigenvalues characterising the linear modes do not change significantly when the number of grid points is increased.

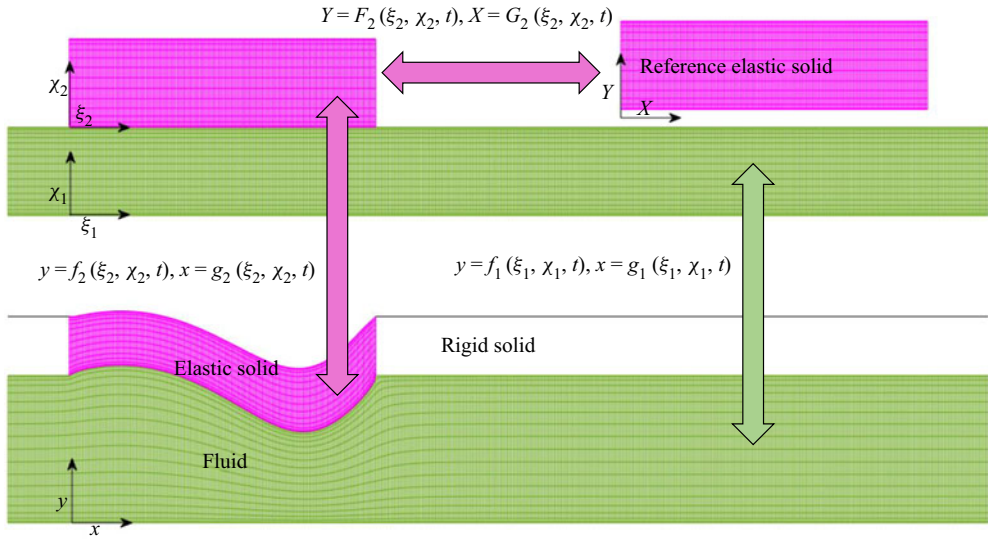


Figure 2. Computational subdomains and grids for the original and mapped variables.

### 2.3. Steady solutions

Steady solutions of the nonlinear equations (2.1) with all variables independent of time are obtained by solving all equations simultaneously (a so-called monolithic scheme) using a Newton–Raphson technique. One of the main characteristics of this procedure is that the elements of the Jacobian matrix  $\mathcal{J}^{(p,q)}$  of the discretised system of equations are obtained by combining analytical functions and collocation matrices. This allows us to take advantage of the sparsity of the resulting matrix to reduce the computation time on each Newton step.

We denote the steady solution of the system with the subscript  $b$ . We trace the steady solutions as a function of the model parameters and quantify using the minimal and maximal positions of the lower surface of the flexible wall, denoted as

$$\hat{h}_{min} = \min_x \left( \frac{h_{1b}}{h} \right) \quad \text{and} \quad \hat{h}_{max} = \max_x \left( \frac{h_{1b}}{h} \right). \quad (2.10a,b)$$

### 2.4. Small amplitude perturbations

To test the stability of a given steady state we calculate the linear two-dimensional global modes by assuming the temporal dependence

$$\Psi(x, y; t) = \Psi_b(x, y) + \epsilon \delta\Psi(x, y)e^{-i\omega t}, \quad (\epsilon \ll 1), \quad (2.11)$$

where  $\Psi(x, y; t)$  represents any dependent variable while  $\Psi_b(x, y)$  and  $\delta\Psi(x, y)$  denote the base (steady) solution and the spatial dependence of the eigenmode for that variable, respectively, while  $\omega = \omega_r + i\omega_i$  is the frequency (an eigenvalue). Both the eigenfrequencies and the corresponding eigenmodes are calculated as a function of the governing parameters. The dominant eigenmode is that with the largest growth factor  $\omega_i$ . If that growth factor is positive, the base flow is asymptotically unstable.

As explained by Herrada & Montanero (2016), the numerical procedure used to solve the steady problem can be easily adapted to solve the eigenvalue problem which determines the linear global modes of the system. In this case, the temporal derivatives are

computed assuming the temporal dependence (2.11). The spatial dependence of the linear perturbation  $\delta\Psi^{(q)}$  is the solution to the generalised eigenvalue problem  $\mathcal{J}_b^{(p,q)}\delta\Psi^{(q)} = i\omega Q_b^{(p)}\delta\Psi^{(q)}$ , where  $\mathcal{J}_b^{(p,q)}$  is the Jacobian of the system evaluated with the basic solution  $\Psi_b^{(q)}$ , and  $Q_b^{(p,q)}$  accounts for the temporal dependence of the problem. This generalised eigenvalue problem is solved using MATLAB eigs function.

### 2.5. Fully nonlinear dynamical simulations

The numerical method can be extended to compute unsteady solutions of the full nonlinear equations (2.1). Temporal derivatives are discretised using second-order backwards differences and at each time step the resulting system of (nonlinear algebraic) equations is solved using the Newton–Raphson technique (as in § 2.3). Simulations employ the same mesh as the steady simulations with a fixed timestep of  $\Delta t = 0.0125$  required to capture the strong oscillations observed in the fully saturated nonlinear regime (this translates into approximately 640 timesteps per period for the oscillation shown in figure 12 below). We have verified that the nonlinear predictions are unchanged when the timestep is reduced to  $\Delta t = 0.0075$ . Given the large number of timesteps required, these simulations are much more computationally expensive than the global stability eigensolver and so only two relevant cases will be considered to support the global stability analysis (see figures 6 and 12 below). For example, the nonlinear simulation described in § 3.5 takes more than one week to reach the corresponding nonlinear limit cycle, while for the same machine the computation of the eigenvalues takes just a few minutes.

### 2.6. Control parameters

To non-dimensionalise the system we scale all lengths on the baseline channel width  $h$ , velocities on the mean inlet speed  $q/h$ , time on  $h^2/q$ , the fluid stress on the viscous scale  $\eta_1 q/h^2$  and the solid stress on the elastic shear modulus  $\mu_2$ . The solutions are characterised by the dimensionless profile of the interface between fluid and solid  $\hat{h}_{b1} = h_{b1}/h$ , the dimensionless frequency  $\hat{\omega} = \omega q/h^2$  and the dimensionless eigenfunction profile of the surface between the fluid and the solid, denoted  $\hat{\delta h}_1 = (\delta h_1)/h$ . As is conventional in this literature, a wall profile is termed as mode- $n$  if  $\hat{\delta h}_1$  has  $n$  extrema across the compliant segment. The resulting problem is governed by six dimensionless parameters,

$$Re = \frac{\rho_1 q}{\eta_1}, \quad Q = \frac{\eta_1 q}{h^2 \mu_2}, \quad \hat{p}_{ext} = \frac{P_{ext}}{\mu_2}, \quad \hat{T}_0 = \frac{T_0}{h \mu_2}, \quad \hat{e} = \frac{e}{h}, \quad \hat{\rho} = \frac{\rho_2 q^2}{h^2 \mu_2}, \tag{2.12a-f}$$

representing the Reynolds number, the ratio of the viscous stresses in the fluid to the elastic shear stresses in the wall, the dimensionless external pressure, the dimensionless longitudinal pre-tension, the dimensionless thickness of the flexible wall and the ratio between the inertial and the elastic forces in the solid. The dimensionless system also involves three geometrical factors,

$$\hat{L}_1 = \frac{L_1}{h}, \quad \hat{L} = \frac{L}{h}, \quad \hat{L}_2 = \frac{L_2}{h}, \tag{2.13a-c}$$

which will be held constant throughout this study.

### 3. Results

In this section we predict the stability of flow through a flexible-walled channel with a hyperelastic wall. We first validate our model against published results for steady flow through channels with thin flexible walls presented by Heil (2004) (§ 3.1) and then examine the unsteady transition from beyond the upper branch limit point to the lower branch of steady solutions (§ 3.2). We then consider the onset of self-excited oscillations associated with these steady states across the parameter space spanned by Reynolds number and external pressure (§ 3.3), before examining the role of wall pre-tension (§ 3.4), the nonlinear limit cycles of oscillations which grow from the upper branch of steady solutions (§ 3.5), as well as the role of wall thickness (§ 3.6) and the role of wall inertia (§ 3.7) in the onset of these oscillations. Following Heil (2004), in all simulations we hold  $\hat{L}_1 = 1$ ,  $\hat{L} = 5$ ,  $\hat{L}_2 = 10$  and fix the fluid–structure interaction parameter as  $Q = 0.01$ , indicating that elastic stresses dominate viscous stresses. In the results below we vary the Reynolds number  $Re$ , external pressure  $\hat{p}_{ext}$ , the wall pre-tension  $\hat{T}_0$  (§ 3.4), the wall thickness  $\hat{e}$  (§ 3.6) and the wall inertia parameter  $\hat{\rho}$  (§ 3.7).

#### 3.1. Steady flow with thin flexible walls

We first compare the predictions from our numerical method against the predictions of Heil (2004), who studied the flow through the geometry shown in figure 1 but where his elastic wall was modelled using (geometrically nonlinear) shell theory, intended to capture large displacements in the elastic solid. Our choice of non-dimensionalisation is identical to Heil (2004), with the exception that he defines a membrane pre-stress  $\sigma_0$ , which is related to our membrane pre-tension parameter through

$$\sigma_0 = \frac{\hat{T}_0}{\hat{e}}. \quad (3.1)$$

To compare with the predictions of Heil (2004), we consider a small wall thickness  $\hat{e} = 0.01$ . We then use pre-tension  $\hat{T}_0 = 10$  to ensure that  $\sigma_0 = 1000$ , as used by Heil (2004). Since the inertia of the solid was neglected in that work we also set  $\hat{\rho} = 0$  in our simulations in this section (we consider non-zero wall inertia in § 3.7 below).

In order to compare the predictions of our model with those of Heil (2004), in figure 3 we illustrate the steady flow field computed using our method (figure 3a) and the steady flow field obtained using the model of Heil (2004) (figure 3b). We observe excellent quantitative agreement between the two approaches, not only in the pressure distribution but also in the streamlines, where both exhibit a recirculating flow separation region downstream of the point of strongest wall collapse. Quantitatively, we compute the relative error in the maximal (minimal) fluid pressure as 0.2028 % (0.2089 %) between our approach and the data from Heil (2004) for these parameter values.

Following Heil (2004), in figure 4 we characterise the steady solutions of the system by the minimal ( $\hat{h}_{min}$ ) and maximal ( $\hat{h}_{max}$ ) channel width as a function of the model parameters. Similar to previous studies in collapsible channels (Luo & Pedley 2000; Heil 2004; Stewart 2010, 2017) and collapsible tubes (Heil & Boyle 2010), we find that for sufficiently large Reynolds numbers the system can admit multiple steady solutions at the same point in parameter space. For example, figure 4(a) shows that the minimum dimensionless channel width ( $\hat{h}_{min}$ ), when plotted as a function of the external pressure,  $\hat{p}_{ext}$ , lies on a curve with three branches connected by two limit points (or fold bifurcations), where these three branches are labelled I, II and III. In order to quantify

## Flexible channel flow with a hyperelastic wall

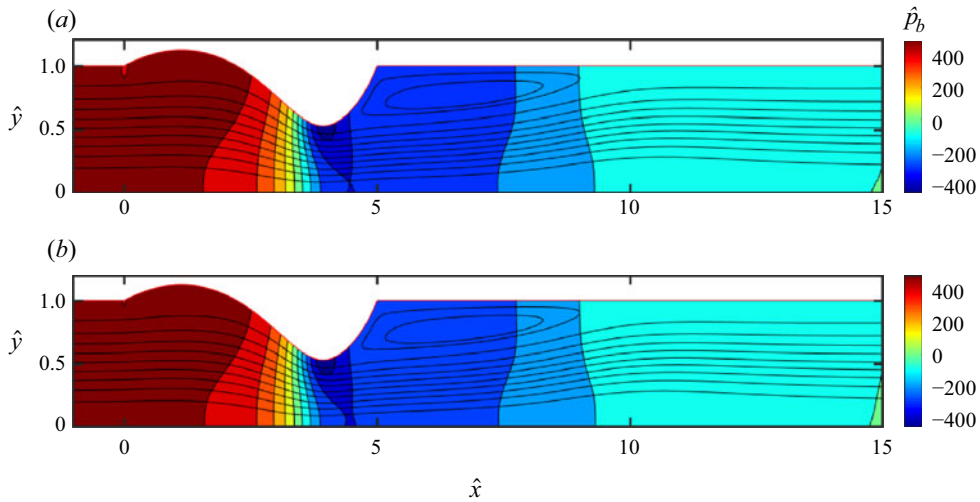


Figure 3. Streamlines and pressure contours for the steady solution computed at fixed Reynolds number ( $Re = 500$ ) and fixed external pressure ( $\hat{p}_{ext} = 3.204$ ) obtained from: (a) the present model; (b) the model of Heil (2004). Here,  $\hat{T}_0 = 10$ ,  $\hat{\epsilon} = 0.01$  and  $\hat{\rho} = 0$ .

the difference between our results and those of Heil (2004), figure 4(b) compares our prediction of the intermediate and lower steady branches as a function of external pressure with those depicted in figure 4 of Heil (2004) (for the same parameter values). We observe excellent quantitative agreement, although the two approaches do diverge slightly for larger external pressures when the channels are significantly more collapsed, which we attribute to the increased prominence of the differences between the wall models. Furthermore, we also produce the same plot for a smaller Reynolds number ( $Re = 250$ ) for which the wall profile is unique for all external pressures. Again we see excellent quantitative agreement between the models, with a slight divergence as the channel becomes increasingly collapsed.

Along branch I (solid black line in figure 4), whose points correspond to a flow field like the one depicted in figure 5(a), where the wall is entirely bulged outwards: this branch was termed the upper branch of steady solutions by Stewart (2017). This upper branch persists as external pressure increases until an upper branch limit point is reached (denoted  $\hat{p}_{ext} = \hat{p}_{ext1}$ ). For values of external pressure larger than  $\hat{p}_{ext1}$  the elastic wall instantaneously collapses and the steady solution jumps catastrophically towards branch III (solid yellow line), where the wall is highly collapsed and the steady flow has separated beyond the constriction (figure 5c); this entirely collapsed branch was termed the lower branch of steady solutions by Stewart (2017). This re-circulating region is a prominent feature of branch III flow fields (figure 5c). We explore the transition from the upper branch limit point toward the lower steady branch in § 3.2 below, showing the birth of the re-circulation region as the channel becomes more collapsed. However, such a re-circulation region may not necessarily be a requirement for multi-valued steady solutions, since *ad hoc* one-dimensional models (which employ a flow-profile assumption which does not allow flow separation) also exhibit these multiple steady states (Stewart 2010, 2017) The lower branch (branch III) persists as we decrease the external pressure below  $\hat{p}_{ext1}$  until the lower branch limit point is reached (denoted  $\hat{p}_{ext} = \hat{p}_{ext2}$ , where  $\hat{p}_{ext2} < \hat{p}_{ext1}$ ). For even lower external pressures the system jumps to the upper branch, the recirculating region disappears and the channel wall bulges outward (figure 4a). The upper



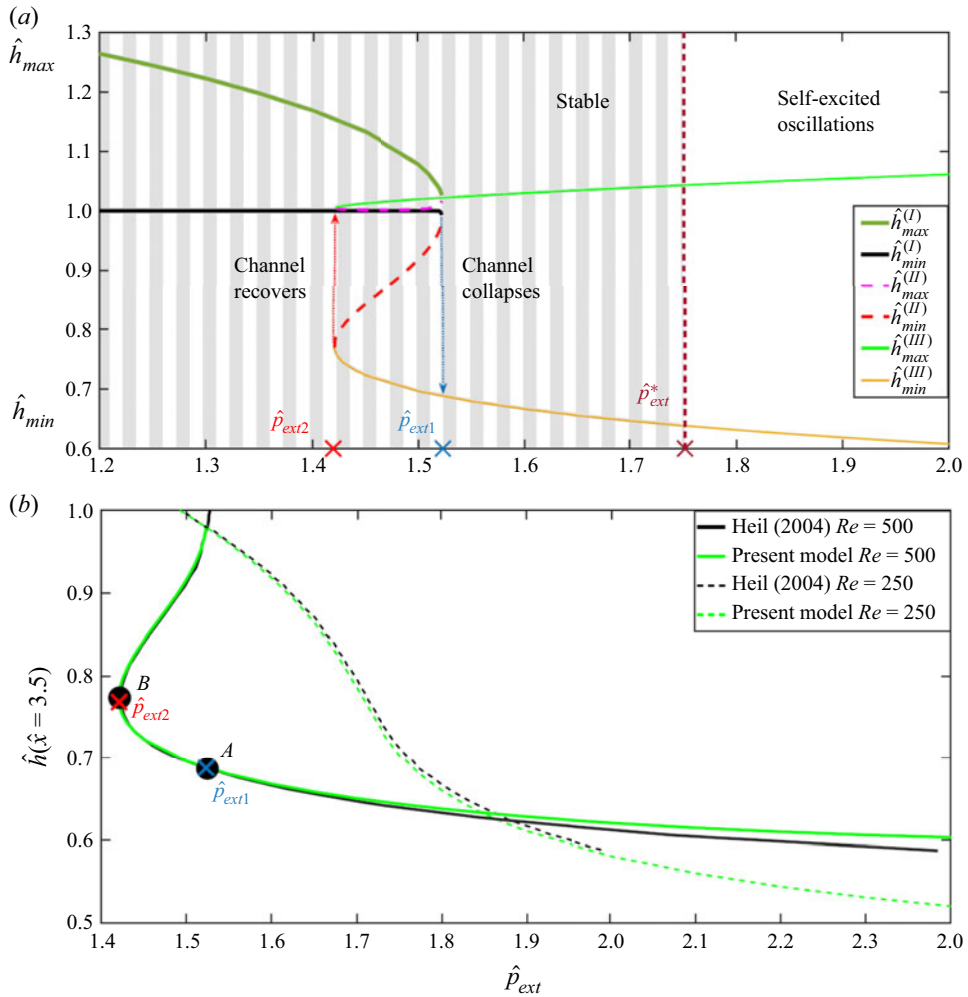


Figure 4. Nonlinear steady solutions of the model for fixed Reynolds number ( $Re = 500$ ) and pre-tension ( $\hat{T}_0 = 10$ ) showing: (a) the maximal and minimal channel widths as a function of the external pressure; (b) the channel width at  $\hat{x} = 3.5$  as a function of the external pressure (black line), compared with the prediction from figure 4 in Heil (2004) (green line). The dotted lines in (b) show the comparison the present model (black) with Heil (2004) (green) for a smaller Reynolds number,  $Re = 250$ , where the steady state is unique. Here,  $\hat{\epsilon} = 0.01$  and  $\hat{\rho} = 0$ .

and lower branches (I and III) are connected by an intermediate branch termed branch II, which we trace by numerical continuation. Below we confirm the observation of previous studies that this intermediate branch is always unstable to perturbations. A typical flow field for a solution along this intermediate branch is shown in figure 5(b).

### 3.2. Transition from the upper branch limit point

As the external pressure increases beyond the upper branch limit point the system abruptly transitions to the lower branch steady state. This transition is explored in figure 6, where we plot the unsteady evolution of the system from the upper branch limit point when the external pressure is instantaneously increased. In particular, we consider an unsteady simulation from the upper branch limit point at  $R = 500$  for  $\hat{T}_0 = 10$ , displacing the



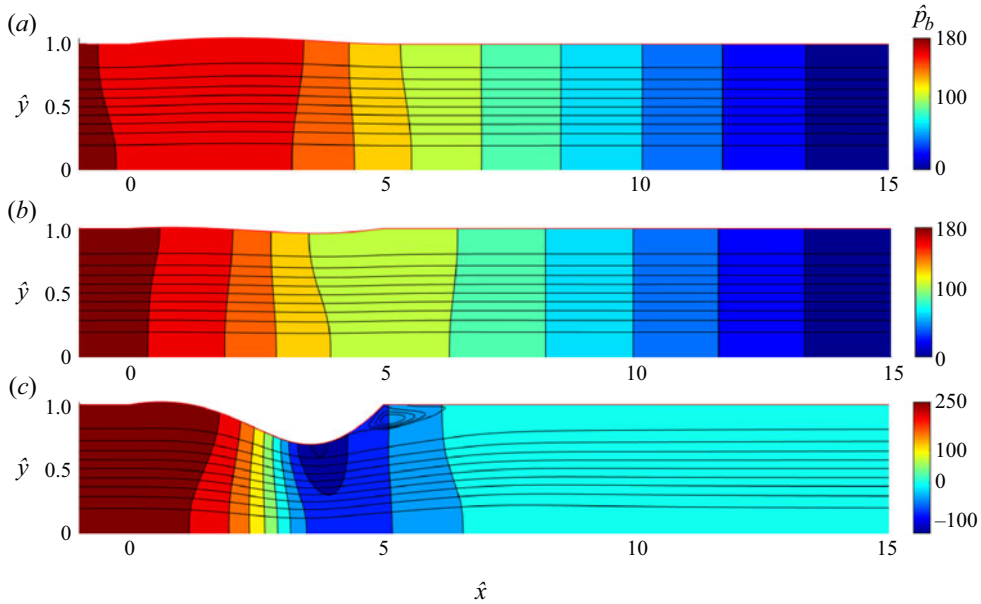


Figure 5. Streamlines and pressure contours for three branches of steady solutions for fixed Reynolds number ( $Re = 500$ ) and fixed external pressure  $\hat{p}_{ext} = 1.52$ : (a) the upper branch (branch I); (b) the intermediate branch (branch II); (c) the lower branch (branch III). Here,  $\hat{T}_0 = 10$ ,  $\hat{\epsilon} = 0.01$  and  $\hat{\rho} = 0$ .

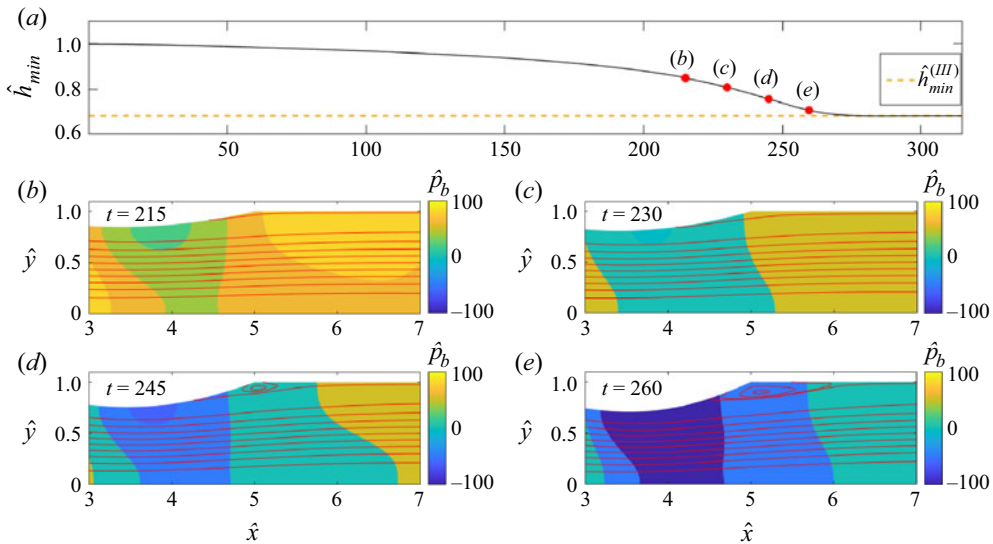


Figure 6. Unsteady transition from the upper branch limit point to the lower steady branch for a thin wall ( $\hat{\epsilon} = 0.01$ ) with no wall inertia ( $\hat{\rho} = 0$ ): (a) time trace of the minimal channel width ( $\hat{h}_{min}$ ); streamlines and pressure colour map of the channel close to the outlet of the compliant segment at four selected times: (b)  $t = 215.0$ ; (c)  $t = 230.0$ ; (d)  $t = 245.0$ ; (e)  $t = 260.0$ . The time points plotted in (b–e) are marked in panel (a). Here,  $\hat{p}_e = 1.54$ ,  $Re = 500$  and  $\hat{T}_0 = 10$ .

external pressure from  $\hat{p}_{ext} = 1.52$  to  $\hat{p}_{ext} = 1.54$  (marked with a cross in figure 8). Over time the channel wall collapses monotonically toward the lower steady state (figure 6a). Initially, the rate of collapse is slow and the flow is laminar (figure 6b),

but as the channel becomes increasingly constricted the rate of collapse increases and boundary layer separation takes place (figure 6c), where a re-circulation region becomes evident close to the downstream outlet of the compliant segment of the channel (figure 6d), creating a region of much lower pressure (figure 6e). A movie showing the entire transition is provided in the online supplementary material available at <https://doi.org/10.1017/jfm.2021.1131>.

There is an interesting analogy between these observations and those reported for swirling flows in pipes (see for e.g. Lopez 1994; Herrada, Pérez-Saborid & Barrero 2003), where fluid flows with a significant azimuthal velocity component through a rigid circular tube with an axisymmetric (fixed) sinusoidal indentation over a finite length. In this analogy the indentation of the pipe mirrors the collapse of the compliant segment of the channel, while the azimuthal fluid velocity component (and to some extent the compressibility of the fluid) extracts energy from the mean flow in a similar way to the compliance of the elastic wall. These swirling flows exhibit multiple (stable) steady solutions for a given set of parameters (when the Reynolds number is larger than a critical one) and the steady solutions can be described using bifurcation diagrams with three branches of steady solutions and two limit points, analogous to those presented in figure 4; this behaviour was recently termed ‘double hysteresis’ (Shtern 2018). These swirling flows also exhibit an unsteady transition from a nearly columnar flow to a recirculating flow when the swirling parameter is larger than a critical value (vortex breakdown), analogous to the spontaneous collapse of the channel we observe as the external pressure increases above the critical value ( $\hat{p}_{ext1}$ ). In the former case, centrifugal forces generate an adverse axial pressure gradient that induces a recirculating flow, whereas the channel collapse generates an adverse pressure gradient that drives detachment of the boundary layer adjacent to the flexible wall. The flow structures in figures 6–9 of Herrada *et al.* (2003) are reminiscent of the transition observed in figure 6, where in both cases the vortex breakdown occurs just downstream of the point of greatest indentation. The only significant difference comes in the cross-stream location of vortex shedding: the symmetry of the cylindrical geometry in the swirling flows results in vortex shedding near the axis of the tube, while in the collapsible channel the vortex shedding occurs near the flexible wall.

### 3.3. Linear stability results

Having computed the steady configurations of the system, we now analyse the temporal linear stability of the three different steady solution branches depicted in figure 4. For this large value of pre-tension ( $\hat{T}_0 = 10$ ) we find that the steady solutions along the section of the upper branch tested are globally stable to time-dependent perturbations (all the eigenvalues have  $\omega_i < 0$ ) for all external pressures greater than the outlet pressure (i.e.  $\hat{p}_{ext} \geq 0$ ), while the solutions along the intermediate branch are always unstable (at least one eigenvalue has  $\omega_i > 0$  with  $\omega_r = 0$ ). Figure 7 illustrates the stability of the lower steady branch, showing the eigenvalue spectrum of the frequency  $\omega$  for several values of the external pressure,  $\hat{p}_{ext}$ . In this case (and in figure 11 below) we focus only on the most unstable eigenvalues, illustrating those with  $\omega_i > -0.5$ . We find that the lower branch is stable for sufficiently small external pressure, becoming globally unstable via a Hopf bifurcation when the external pressure exceeds a critical value,  $\hat{p}_{ext}^* \approx 1.752$  (i.e. a pair of complex conjugate eigenvalues cross the real axis with non-zero  $\omega_r$ ). At this critical point, the corresponding steady state is shown in figure 7(b), where it is inflated at the upstream end and collapsed at the downstream end (termed mode-2). The corresponding eigenfunction of the wall profile for the neutrally stable mode is shown in figure 7(c), which has two extrema (mode-2). We label the oscillatory modes associated with the

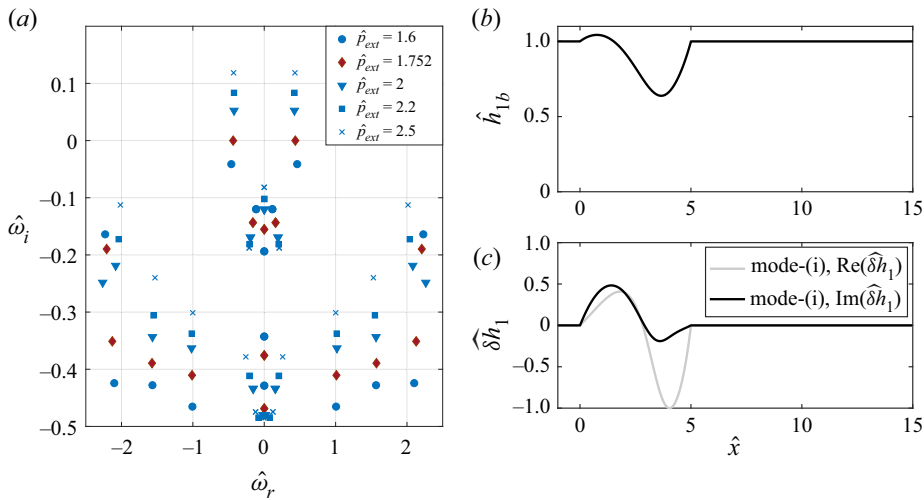


Figure 7. Stability of the lower steady branch to time-dependent perturbations for fixed Reynolds number ( $Re = 500$ ) and fixed pre-tension ( $\hat{T}_0 = 10$ ): (a) five eigenvalue spectra in the  $\omega$ -plane for increasing values of  $\hat{p}_{ext}$ ; (b) profile of the lower surface of the steady wall at neutral stability ( $\hat{p}_{ext} \approx 1.752$ ); (c) real and imaginary parts of the wall profile eigenfunction at neutral stability ( $\hat{p}_{ext} \approx 1.752$ ). Here,  $\hat{\epsilon} = 0.01$  and  $\hat{\rho} = 0$ .

lower branch with lower case Roman numerals (i), (ii), (iii) . . . in the order of increasing frequency, which is generally the order they become unstable as the external pressure increases, and so this primary instability is denoted mode-(i). These stability predictions agree well with the results presented by Heil (2004), where his figure 5 shows that the flow becomes unsteady and exhibits self-excited oscillations for  $\hat{p}_{ext} = 2.5$ , well inside our unstable regime. These results are also qualitatively similar to the predictions of the one-dimensional model of Stewart (2017), who showed that his lower branch of steady solutions becomes unstable to a mode-2 oscillation as the primary global instability of the system as the external pressure increases.

We overview the parameter space in figure 8 to summarise the regions of interest. We illustrate the region with multiple steady solutions by tracing the value of the external pressure at the limit points of the upper and lower steady branches ( $\hat{p}_{ext1}$  and  $\hat{p}_{ext2}$ , analogous to those found in figure 4) as a function of the Reynolds number; similar to Stewart (2017), we find that this region with multiple steady states exists for Reynolds numbers greater than a threshold ( $Re > Re_{cusp} \approx 330$ ). We further plot the critical external pressure for the onset of oscillatory instability,  $\hat{p}_{ext}^*$ , as a function of the Reynolds number, finding that for the range of Reynolds numbers explored here the neutral stability curve lies entirely within the range where there is a unique steady solution along the lower steady branch, so  $\hat{p}_{ext}^* > \hat{p}_{ext1}$ . Note that we observe no instability of the upper steady branch for this choice of the wall pre-tension ( $\hat{T}_0 = 10$ ) across the range  $0 \leq \hat{p}_{ext} \leq \hat{p}_{ext1}$ . It emerges below that this branch only becomes unstable for  $\hat{p}_{ext} < 0$  for this value of  $\hat{T}_0$ , which is not considered here. For large Reynolds number we might expect the neutral stability curve to enter the region of parameter space with multiple steady states (in a similar manner to Stewart 2017), but this possibility is discussed in more detail below.

### 3.4. The influence of the pre-tension in the solid

When the pre-tension of the elastic wall is reduced, we observe a decrease in the critical Reynolds number beyond which multiple steady flows exist, and the steady state

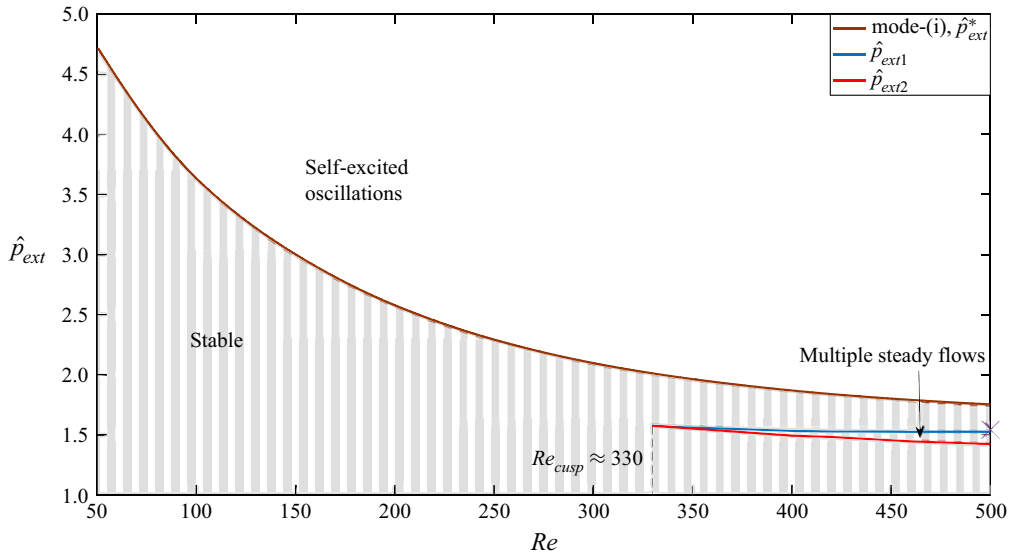


Figure 8. Overview of the critical conditions for self-excited oscillations for pre-tension  $\hat{T}_0 = 10$ , plotting the critical external pressure for instability as a function of the Reynolds number. The cross symbol indicates the point in parameter space which corresponds to the unsteady simulation shown in figure 6. Here,  $\hat{\epsilon} = 0.01$ ,  $\hat{\rho} = 0$ .

bifurcation diagram and neutral stability curves become more complicated. To illustrate this complexity, in figure 9 we characterise the multiplicity of steady solutions that exist for a lower value of the pre-tension ( $\hat{T}_0 = 5$ ) while holding the Reynolds number fixed ( $Re = 500$ ), plotting the minimal ( $\hat{h}_{min}$ ) and maximal ( $\hat{h}_{max}$ ) widths of the steady channel as a function of the external pressure, for the upper and lower branches of steady solutions, obtained following the same procedure as § 3.1. Similar to the case we considered in figure 4 ( $\hat{T}_0 = 10$ ), when the external pressure increases beyond a certain value,  $\hat{p}_{ext} = \hat{p}_{ext1}$ , there is a jump from a solution on the upper branch to a solution on the lower branch (where the channel becomes much more collapsed). In the same way, as we decrease the external pressure along the lower branch below a certain value,  $\hat{p}_{ext} = \hat{p}_{ext2}$ , there is a jump back to the upper branch.

To overview these steady solutions across the parameter space, in figure 10 we plot the external pressure at the limit points of the steady solutions ( $\hat{p}_{ext1}$  and  $\hat{p}_{ext2}$ ) as a function of the Reynolds number for a lower value of the pre-tension ( $\hat{T}_0 = 5$ ), where we find that the critical Reynolds number for multi-valued solutions has reduced ( $Re_{cusp} \approx 275$  in this case). To further illustrate the stability of these steady solutions, in figure 10 we also trace the critical external pressure for the onset of instability as a function of the Reynolds number, finding again that the lower branch of steady solutions (branch III) becomes unstable for external pressures greater than a critical value,  $\hat{p}_{ext}^*$ , and is stable otherwise (figure 10). This observation is similar to our observation for large pre-tension ( $\hat{T}_0 = 10$ ), with the only difference that now the loss of stability is closer to the region of multiplicity of steady solutions, with the two bounding curves almost overlapping for the largest Reynolds numbers considered. Tracing these curves to larger Reynolds numbers is an interesting direction of future work, where we might expect the neutral stability curve and the trace of the lower branch limit point to eventually intersect. Such an intersection was previously observed by Stewart (2017), where the Hopf bifurcation (associated with the

Flexible channel flow with a hyperelastic wall

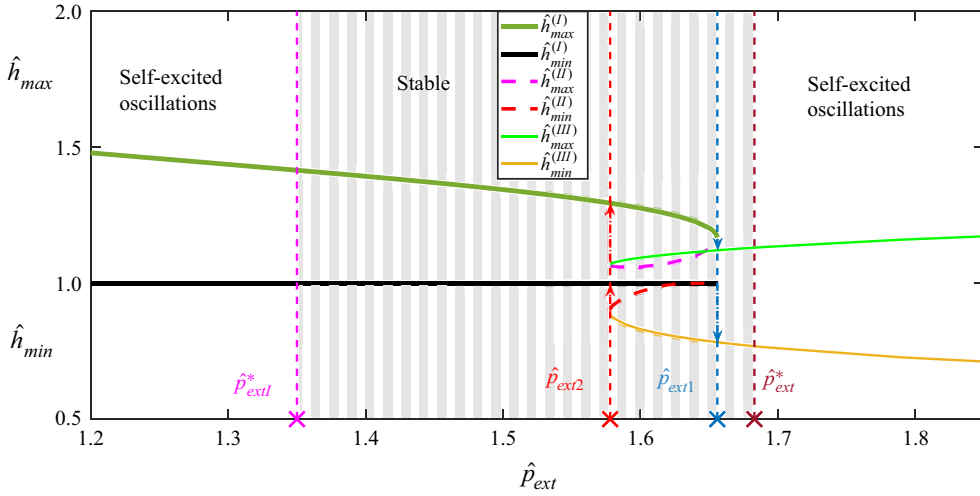


Figure 9. Nonlinear steady solutions of the model for fixed Reynolds number ( $Re = 500$ ) and pre-tension ( $\hat{T}_0 = 5$ ), showing the maximal and minimal channel widths as a function of the external pressure  $\hat{p}_e$ . Here,  $\hat{\epsilon} = 0.01$  and  $\hat{\rho} = 0$ .

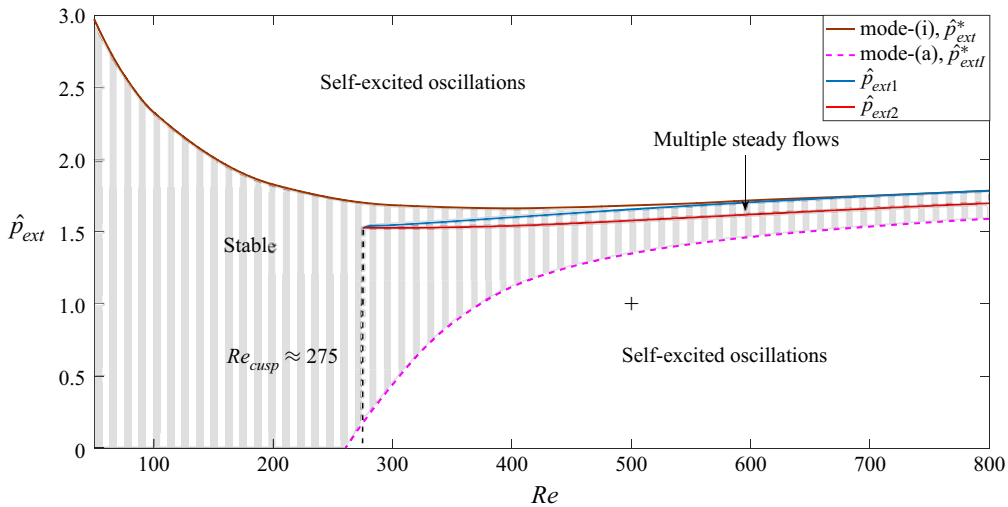


Figure 10. Overview of the critical conditions for self-excited oscillations for lower pre-tension  $\hat{T}_0 = 5$ , plotting the critical external pressure for instability as a function of the Reynolds number. The plus symbol indicates the point in parameter space which corresponds to the nonlinear portrait of the upper branch instability shown in figure 12. Here,  $\hat{\epsilon} = 0.01$ ,  $\hat{\rho} = 0$ .

oscillation) and the saddle node bifurcation (associated with the steady solutions) interact in a co-dimension 2 bifurcation, suggesting a nearby homoclinic orbit (Glendinning 1994).

However, for this lower value of the pre-tension we also observe that steady solutions along the upper branch (branch I in figure 9) also become temporally unstable for external pressures below a critical value, denoted  $\hat{p}_{ext1}^*$ , and are stable otherwise (see figure 10). This means that for  $Re > Re_{cusp}$  there is only a narrow interval of external pressures compatible with a steady stable flow, focused around the region with multiple steady solutions. Instability of the upper branch of steady solutions has recently been noted by

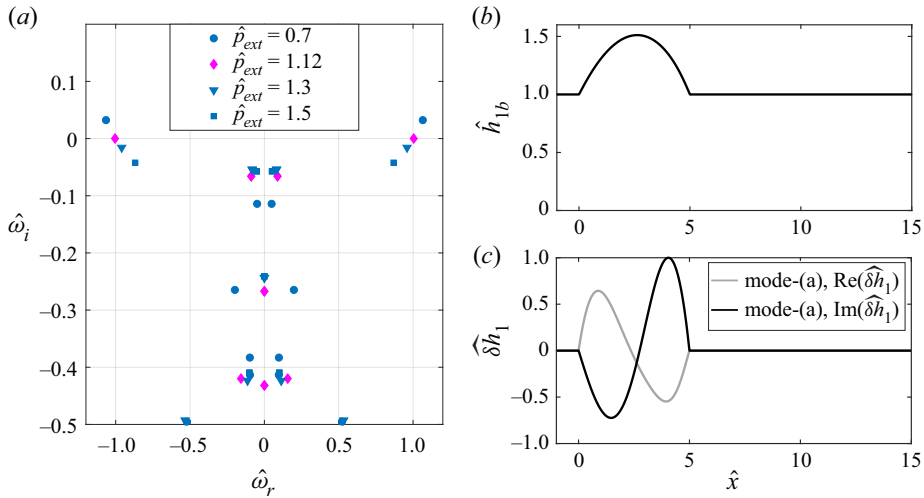


Figure 11. Exploration of the lower branch instability for lower pre-tension  $\hat{T}_0 = 5$ : (a) five eigenvalue spectra in the  $\omega$  plane for increasing external pressure; (b) steady wall profiles for the choice of external pressure where the system is neutrally stable; (c) real and imaginary parts of the corresponding eigenfunction of the wall profile at neutral stability. Here,  $\hat{e} = 0.01$  and  $\hat{\rho} = 0$ .

Wang *et al.* (2021a) using a flexible wall modelled as a thin nonlinear beam, but in their case the region of instability is located within and directly adjacent to the region with multiple steady solutions (Wang *et al.* 2021b), in contrast to that noted here. The fully developed limit cycles also exhibit some significant differences (see § 3.5 below).

To further explore this upper branch instability for lower pre-tension ( $\hat{T}_0 = 5$ ) and fixed Reynolds number ( $Re = 400$ ), in figure 11(a) we plot the corresponding eigenvalue spectra for several values of the external pressure, where a complex conjugate pair of eigenvalues cross into the upper half-plane for  $\hat{p} < \hat{p}_{ext}^* \approx 1.12$  (Note that  $\hat{p}_{ext}^* \approx 1.66$ ), consistent with a Hopf bifurcation. At neutral stability the steady configuration of the flexible wall is entirely inflated with a single hump (termed mode-1, see figure 11b), while the neutrally stable eigenfunction of the oscillating wall profile is mode-2 (figure 11c), similar to the instability of the lower branch. Note that the frequency of oscillation along the upper branch is generally larger than the corresponding instability along the lower branch. Given that this oscillation also has a mode-2 structure of the wall shape eigenfunction, we label modes associated with the upper branch using Roman letters (a),(b),... in order of increasing frequency, which is generally the order they become unstable as the Reynolds number increases. The primary oscillatory mode associated with the upper branch is therefore labelled mode-(a). It is interesting to note that the instability of the mode-1 steady state exhibits a mode-2 eigenfunction profile, presumably because the prescribed upstream flux suppresses modes that induce large volume changes in the flexible segment of the channel (such as the mode-1 oscillations observed with prescribed upstream pressure e.g. Jensen & Heil 2003; Stewart *et al.* 2009, 2010).

The upper branch neutral stability point,  $\hat{p}_{ext}^*$ , can be traced (by numerical continuation) to larger values of the wall pre-tension; we find that the critical external pressure must become negative to induce instability for  $\hat{T}_0 = 10$ , explaining why it was not observed in figures 7 and 8, where we restrict attention to external pressures larger than the channel outlet pressure ( $\hat{p}_{ext} > 0$ ).



We note that the neutral stability curves associated with both the upper and lower steady branches trace close to the region with multiple steady solutions as the Reynolds number increases, suggesting this region plays a key role in the structure of the dynamical system. Stewart (2017) showed that the limit point on the upper steady branch (traced by the blue curve in figures 8 and 10) asymptotes to the saddle node bifurcation point for steady solutions of the inviscid system as the Reynolds number increases. Indeed, both Xu *et al.* (2013) and Stewart (2017) identified the threshold where inviscid steady states emerge as an organising centre of the dynamical system, consistent with our observation. Conversely, the lower branch of steady solutions is entirely maintained by the fluid viscosity (Stewart 2017), and is thus absent in the inviscid limit.

### 3.5. Limit cycles of upper branch instability

Fully nonlinear simulations of self-excited oscillations growing from the lower branch of steady solutions have been widely reported elsewhere (e.g. Heil 2004; Luo *et al.* 2008). An instability of the upper branch of steady solutions was recently reported by Wang *et al.* (2021a), who considered flow through a similar two-dimensional collapsible channel system modelling the flexible wall as a thin (nonlinear) beam with resistance to both bending and stretching (with no pre-stress), and the nonlinear limit cycles were explored using fully nonlinear simulations. However, the upper branch oscillations evident from the present model exhibit a significant difference in structure: for the oscillations reported by Wang the unstable region restabilises as the upper branch limit point is reached (Wang *et al.* 2021a) and remains confined to the neighbourhood of the region with multiple steady states (Wang *et al.* 2021b), whereas for the present model the system is stable in the neighbourhood of the upper branch limit point and instead the unstable region extends over a wide range of external pressures away from the region with multiple steady states (figure 10).

Given the difference in structure between our predictions and those of Wang *et al.* (2021a), in figure 12 we examine the underlying dynamics of our upper branch oscillations using fully nonlinear simulations of our model (method described in § 2.5) at a point in parameter space within the upper branch neutral stability curve. In this case we choose  $Re = 500$ ,  $\hat{p}_{ext} = 1$  and  $\hat{T}_0 = 5$ , marked with a plus inside the unstable region in figure 10. Initiating the simulation on the upper branch steady solution, numerical noise is enough to trigger an oscillatory instability evident in the time trace of the maximal channel width (see figure 12(a) with growth rate and frequency consistent with the global linear stability eigensolver), eventually saturating into a complicated nonlinear limit cycle (one period shown in figure 12(b)). A movie showing the flow field and vorticity over several periods of this limit cycle is provided in the online supplementary material.

Over a period of this limit cycle the wall profile grows a single hump at the downstream end of the compliant segment (figure 12c); this hump propagates upstream reaching a global maximum (figure 12d) before being reflected back downstream again by the upstream rigid segment, where its amplitude subsequently decreases. As this hump propagates downstream a second hump appears at the downstream end of the compliant segment (figure 12e) which eventually dominates the first (figure 12f). However, these two humps do not coalesce but instead the  $x$ -location of the maximum wall deflection changes discontinuously at the global minimum of  $\hat{h}_{max}$  (figure 12(f)), explaining the cusp in figure 12(b) at  $t \approx 1138.2, 1145.5, 1152.8$ . This second hump grows in amplitude, engulfing the remains of the first hump and shedding a low pressure vortex into the downstream rigid segment (figure 12g). This propagating vortex creates a so-called

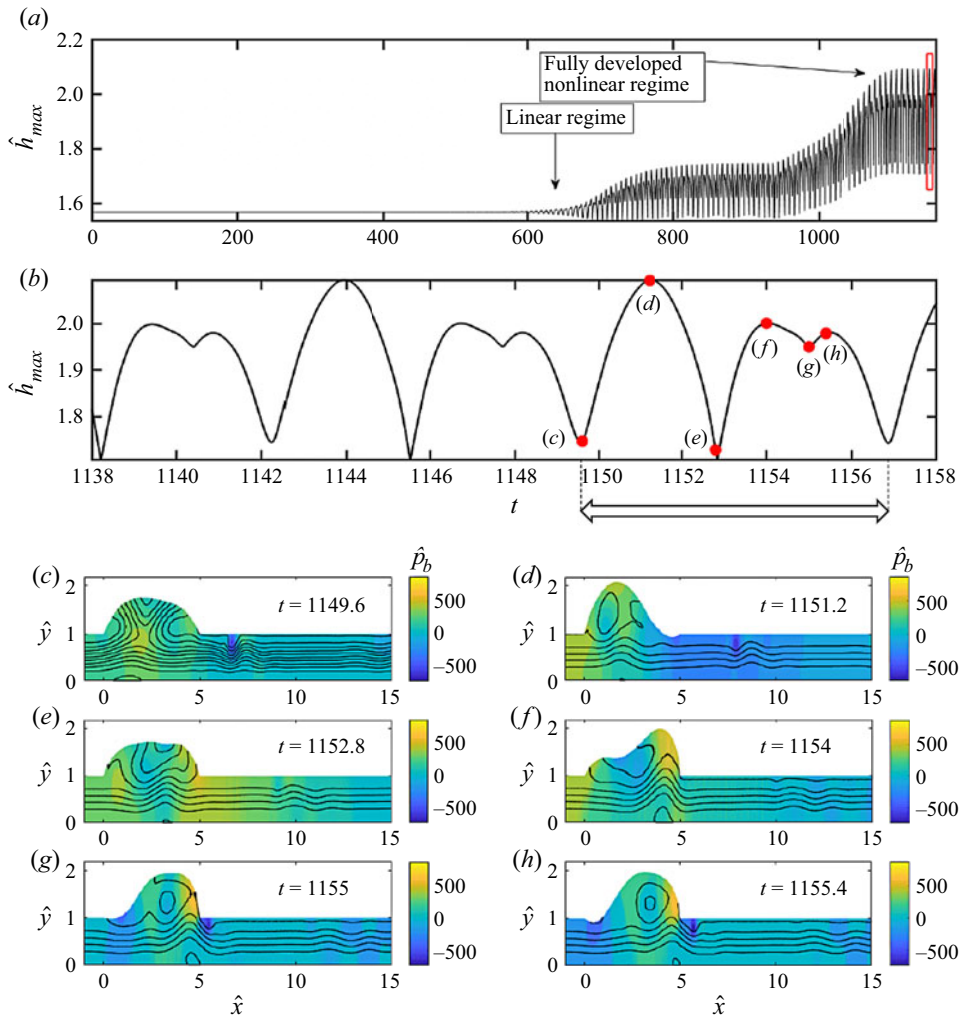


Figure 12. The mechanism of upper branch instability for a thin hyperelastic wall ( $\hat{\epsilon} = 0.01$ ) with no wall inertia ( $\hat{\rho} = 0$ ): (a) the maximal channel width  $\hat{h}_{max}$  as a function of time; (b) zoom-in over panel (a) over one period of oscillation; streamlines and pressure colour map of the channel close to the outlet of the compliant segment at six selected times over a period of oscillation including: (c)  $t = 1149.6$ ; (d)  $t = 1151.2$ ; (e)  $t = 1152.8$ ; (f)  $t = 1154$ ; (g)  $t = 1155$ ; (h)  $t = 1155.4$ . The fully developed limit cycle of interest is enclosed in the red box in (a). The times corresponding to the snapshots in panels (c–h) are labelled in (b). Here,  $Re = 500$ ,  $\hat{p}_{ext} = 1$  and  $\hat{T}_0 = 5$ .

vorticity wave in the downstream rigid segment (particularly evident in figure 12c,g,h) while the large hump at the downstream end of the compliant segment drives a short region of channel collapse at the upstream end. As this vorticity wave propagates downstream, the single hump in the compliant segment propagates upstream, repeating the cycle. The nature of this oscillation exhibits many of the features of the nonlinear upper branch oscillations described by Wang *et al.* (2021a), including the development of an upstream propagating hump. However, for their upper branch oscillations this hump is annihilated by the upstream rigid segment (not reflected) and the flow remains entirely laminar throughout, with no evidence of low pressure vortex shedding. However, the present model is restricted by the assumption of first-order elasticity, meaning that we cannot apply as

### Flexible channel flow with a hyperelastic wall

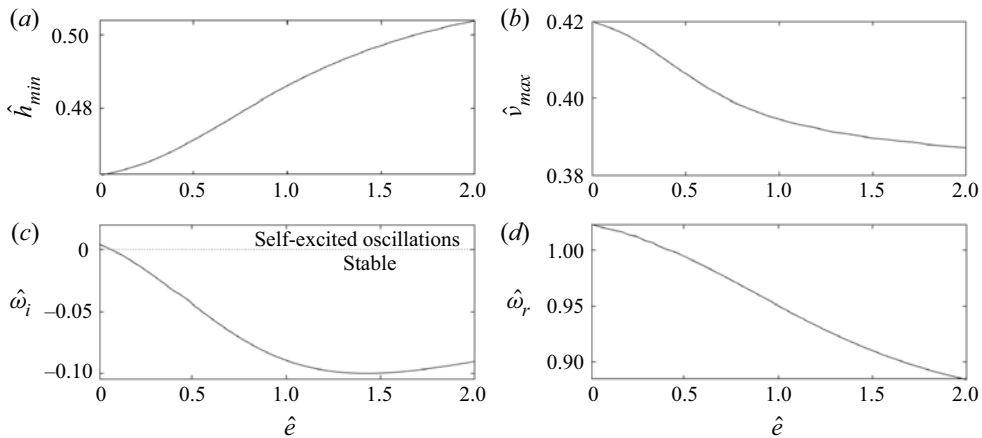


Figure 13. The influence of the wall thickness on the steady and oscillatory solutions in the absence of wall inertia ( $\hat{\rho} = 0$ ): (a) the minimal steady channel width  $\hat{h}_{min}$  as a function of the wall thickness; (b) the maximal steady flow speed  $v_{max}$  as a function of the wall thickness; (c) the growth rate of the primary oscillatory mode as a function of the wall thickness (mode-(i)); (d) the frequency of the primary oscillatory mode (mode-(i)) as a function of the wall thickness. Here,  $\hat{T}_0 = 5$ ,  $\hat{p}_{ext} = 2.98$  and  $Re = 50$ .

many boundary conditions at each end of the beam as Wang *et al.* (2021a) (who applied zero slope conditions at the end of the beam in addition to the clamped conditions).

These vorticity waves have previously been observed in channel flows with self-excited oscillations from a collapsed (lower branch) steady state (Luo & Pedley 1996; Luo *et al.* 2008) or with prescribed (oscillatory) wall motion in one compartment (Stephanoff *et al.* 1983; Pedley & Stephanoff 1985).

#### 3.6. The influence of the wall thickness

In this subsection we analyse the influence of the dimensionless wall thickness,  $\hat{e}$ , on the model predictions. We consider a particular case holding the pre-tension, external pressure and Reynolds number fixed ( $\hat{T}_0 = 5$ ,  $\hat{p}_{ext} = 2.98$  and  $Re = 50$ ). For these parameters, with wall thickness  $\hat{e} = 0.01$ , the system has a unique steady wall shape where the external pressure is sufficiently large to collapse the channel wall ( $\hat{h}_{min} < 1$ ). These parameters are chosen so that the system is just inside the unstable regime for lower branch oscillations ( $Re = 50$  and  $\hat{T}_0 = 5$  which has critical  $\hat{p}_{ext}^* \approx 3.001$ ). In figure 13 we characterise how an increase in the wall thickness influences the underlying steady flow (figure 13a,b) and the critical conditions for the onset of lower branch oscillations (figure 13c,d). Considering the steady system first, figure 13(a) shows that the increase in wall thickness has little effect on the overall shape of the flexible wall for this value of Reynolds number; the channel becomes slightly less constricted as the wall thickness increases. Similarly, figure 13(b) shows that increasing wall thickness slightly reduces the maximal streamwise velocity through the constriction,  $\hat{v}_{max} = \max_{x,y}(\hat{v}_{1xb})$  (as expected by conservation of mass). However, the wall thickness plays a more significant role in determining the stability of these steady solutions. The increase of the wall thickness results in the initially unstable solution (for  $\hat{e} = 0.01$ ) becoming stable for a critical value of the wall thickness  $\hat{e} \gtrsim 0.08$  (figure 13c), with a corresponding decrease in the frequency of oscillation (figure 13d).

In order to quantify the effect of increasing the wall thickness on the stability of the system across the parameter space, in figure 14 we plot the critical external pressure

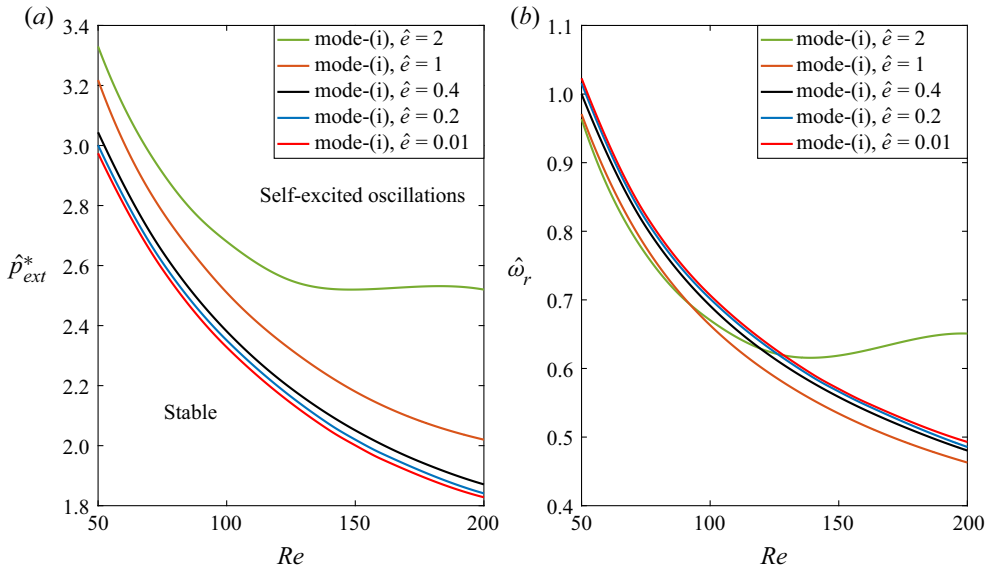


Figure 14. Overview of the critical conditions required for the onset of oscillations while changing the wall thickness, plotting the critical external pressure for the onset of oscillation  $\hat{p}_{ext}^*$  as a function of the Reynolds number for five different wall thicknesses ( $\hat{e} = 0.01, \hat{e} = 0.2, \hat{e} = 0.4, \hat{e} = 1$  and  $\hat{e} = 2$ ). Here,  $\hat{T}_0 = 5$ .

for the onset of the primary oscillatory instability of the lower branch (mode-(i)), denoted as  $\hat{p}_{ext}^*$ , as function of the Reynolds number for fixed pre-tension ( $\hat{T}_0 = 5$ ) and five different wall thicknesses ( $\hat{e} = 0.01, 0.2, 0.4, 1, 2$ ). Note that we have limited our investigation to values of the Reynolds numbers smaller than the critical value required for multiple steady solutions ( $Re_{cusp}$ ), so the steady profile is unique. In the absence of wall inertia ( $\hat{\rho} = 0$ ) the effect of the wall thickness on the critical conditions for instability remains weak for relatively thin walls ( $\hat{e} = 0.01, 0.2, 0.4$ ): the steady flow remains almost unchanged (figure 13a,b) and there is only a mild stabilisation of the instability, characterised by an increase in the critical pressure needed to generate self-excited oscillations (figure 14). It emerges that the thickness of the wall must be of the order of the channel width (i.e.  $\hat{e} \sim 1$ ) before there is any significant difference in the stability threshold. For example, for  $\hat{e} = 1$  and  $\hat{e} = 2$  the critical pressure for the onset of instability is more appreciably increased compared with  $\hat{e} = 0.01$  (figure 14a), while the oscillation frequency is decreased (figure 14b). Furthermore, for  $\hat{e} = 2$  the critical external pressure and oscillation frequency both saturate as the Reynolds number becomes large (figure 14). We show in § 3.7 below that changes to the stability of the system are even more prominent when we include wall inertia.

### 3.7. The influence of wall inertia

We now examine the influence of increasing wall inertia. It should be noted that the steady version of the full nonlinear equations (2.1) is independent of the wall inertia parameter  $\hat{\rho}$ , and so all steady results are unchanged from those reported above. To study the additional influence of wall inertia on the onset of self-excited oscillations growing from the lower branch of static solutions, in figure 15 we trace the growth rate (figure 15a) and frequency (figure 15b) of the mode-(i) instability from figures 8

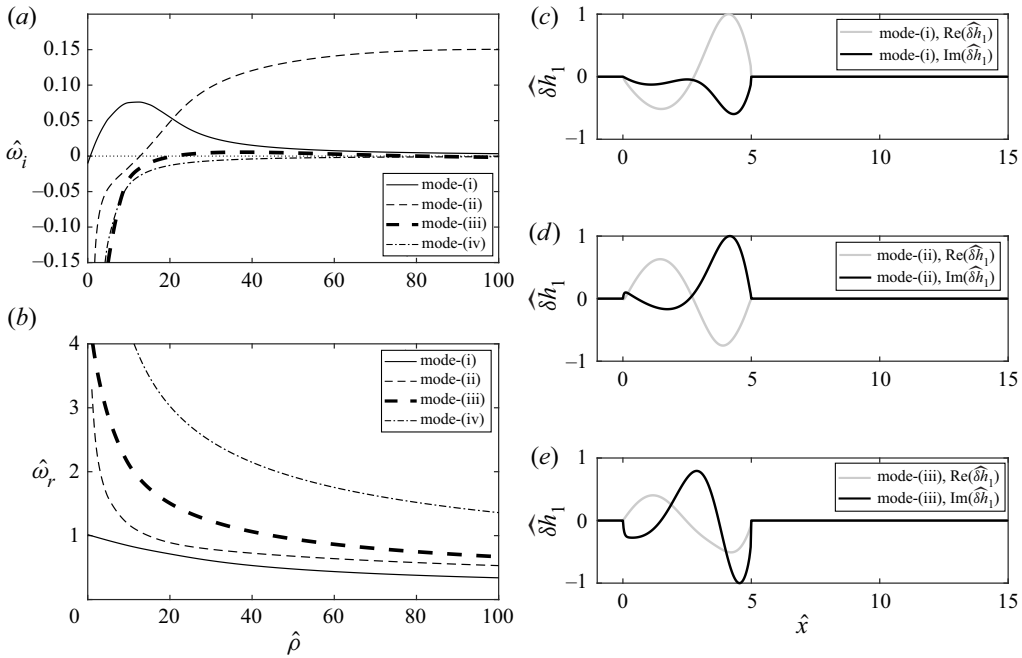


Figure 15. The role of increasing wall inertia in the growth rate and frequency of self-excited oscillations for fixed wall thickness  $\hat{e} = 0.2$ : (a) the growth rate of the first four oscillatory modes as a function of the wall inertia parameter; (b) the corresponding frequency of the first four oscillatory modes as a function of the wall inertia parameter; spatial profiles of real and imaginary parts of the eigenfunctions at neutral stability for (c) mode-(i) ( $\hat{\rho} = 0.631$ ); (d) mode-(ii) ( $\hat{\rho} = 12.73$ ); (e) mode-(iii) ( $\hat{\rho} = 21.02$ ). Here,  $\hat{T}_0 = 5$ ,  $\hat{p}_{ext} = 2.98$  and  $Re = 50$ .

and 10 as a function of the wall inertia parameter  $\hat{\rho}$ ; at neutral stability the eigenfunction profile of the oscillatory mode has two (three) extrema in the real (complex) part of the wall profile (figure 15c), meaning the number of extrema can change over a period of oscillation for these walls of finite thickness. For this choice of parameters the primary oscillatory mode of the lower branch (mode-(i)) is stable for  $\hat{\rho} = 0$ , becoming unstable as the wall inertia parameter,  $\hat{\rho}$ , increases (figure 15a), while the corresponding oscillation frequency decreases (figure 15b). The perturbation growth rate for lower branch mode-(i) exhibits a local maximum at  $\hat{\rho} \approx 10$  before asymptoting toward zero as the wall inertia parameter continues to increase. Hence, this mode of instability approaches stability with decreasing oscillation frequency as the wall gets heavier. However, as the wall inertia parameter increases a second mode of oscillation also becomes unstable at  $\hat{\rho} \approx 12.72$  (figure 15a) with larger frequency than mode-(i) (figure 15b); we term this mode-(ii), which also has a perturbation wall profile with two extrema (figure 15d) albeit with a narrow boundary layer at the upstream end of the profile. Unlike the primary mode, the growth rate of this instability continues to increase as  $\hat{\rho}$  increases for these parameter values, while the corresponding oscillation frequency again approaches zero (figure 15b). As the wall mass parameter becomes even larger, we eventually observe another mode becoming destabilised for  $\hat{\rho} \approx 21.02$  with larger frequency (figure 15b) which we term mode-(iii), where the wall profile again exhibits two extrema with a narrow upstream boundary layer (see eigenfunction wall profile in figure 15e). Further increases in the wall inertia parameter destabilises mode-(iv) (figure 15a,b). Note that, in accordance with our naming convention, the oscillation

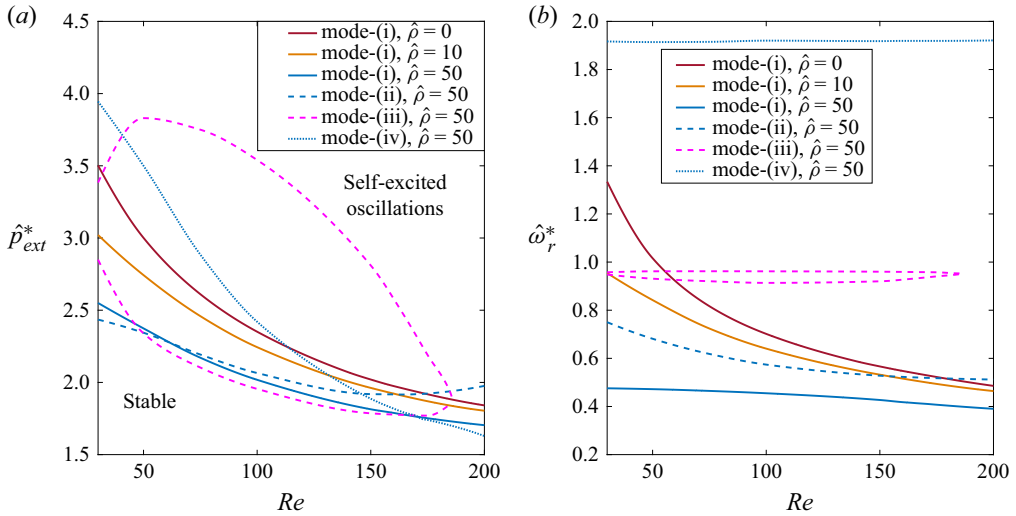


Figure 16. An overview of the critical conditions for the onset of instability for fixed wall thickness  $\hat{e} = 0.2$  for three different values of the wall inertia parameter  $\hat{\rho} = 0, 10, 50$ : (a) the critical external pressure for the onset of the four most unstable modes of the system (modes-(i) to (iv)) as a function of the Reynolds number; (b) the corresponding neutrally stable oscillation frequency of these four modes as a function of the Reynolds number. Here,  $\hat{T}_0 = 5$ .

frequency of each mode increases with increasing mode number (figure 15b). In summary, increasing the wall inertia parameter, for all other parameters held fixed, destabilises the primary global instability of the system, but also destabilises higher modes of instability.

In order to summarise the influence of increasing wall inertia across the parameter space, in figure 16 we plot the critical external pressure for the onset of lower branch oscillations,  $\hat{p}_{ext}^*$ , as a function of the Reynolds number for constant wall thickness ( $\hat{e} = 0.2$ ) and fixed pre-tension ( $\hat{T}_0 = 5$ ) for three different values of the wall inertia parameter ( $\hat{\rho} = 0, 10, 50$ ). For small values of the wall inertia parameter ( $\hat{\rho} = 0, 10$ ) we find only mode-(i) across the section of parameter space considered (a direct continuation of mode-(i) identified in the absence of wall inertia); this mode becomes increasingly unstable as  $\hat{\rho}$  increases (figure 16a), while the corresponding frequency of oscillation decreases (figure 16b). This observation is consistent with the work of Luo & Pedley (1998), who found that increasing wall mass enlarges the unstable region of parameter space. However, consistent with figure 15, as the wall inertia parameter increases, additional (higher-frequency) modes of instability also arise in the system. In particular, we identify modes (i), (ii), (iii) and (iv), labelled in order of increasing frequency. In fact, it emerges that for  $\hat{\rho} = 50$ , for the parameters investigated the mode-(ii) oscillation is more unstable than mode-(i) until  $Re \approx 46$ . Beyond this critical value mode-(iii) becomes the most unstable mode, while for even larger Reynolds numbers ( $Re \gtrsim 166$ ) there is another cross-over in parameter space and mode-(iv) becomes the most unstable mode. Note that the frequency of the oscillation increases with increasing mode number (figure 16b). These observations are again consistent with the predictions of Luo & Pedley (1998), who found that a higher-frequency oscillatory mode eventually dominated the fundamental mode as the wall inertia parameter increased.

Figure 16(a) also highlights that the structure of the neutral stability curve for mode-(iii) oscillations is somewhat different to the traces of mode-(i), (ii) and (iv), exhibiting a



maximal Reynolds number and a two-branch structure analogous to the tongue structures seen in other collapsible channel systems (Luo *et al.* 2008; Stewart 2017).

#### 4. Discussion

In this paper we have developed a model for the flow of Newtonian fluid through a finite-length (asymmetric) flexible-walled channel, as a planar analogue of flow through a Starling resistor experiment. The flexible wall of the channel was assumed to be a pre-tensioned hyperelastic material of finite thickness, overcoming the limitation with more approximate models that require the elastic wall to be asymptotically thin (such as a membrane (e.g. Luo & Pedley 1996), a nonlinear beam (e.g. Luo *et al.* 2008; Wang *et al.* 2021*a*) or an elastic shell (e.g. Heil 2004)) and providing a much closer resemblance to the experiments where the tube walls are typically of the order of the tube radius (e.g. Bertram *et al.* 1990, 1991; Bertram & Castles 1999). It should be noted that in the limit of an asymptotically thin wall our hyperelastic model can be rationally reduced to either a membrane or an elastic shell depending on the assumptions. Flow through the channel is driven by a prescribed upstream flux against a prescribed downstream pressure, while the compliant segment of the channel is externally pressurised. This model is validated against previous predictions which approximated the wall using nonlinear shell theory (Heil 2004), showing excellent agreement (figures 3, 4).

The numerical method used in this study is based on an arbitrary Lagrangian–Eulerian approach (Hirt, Amsden & Cook 1974; Donea *et al.* 2004; Hron & Turek 2006; Basting *et al.* 2017; Ryzhakov *et al.* 2020), in that one can either move with the fluid (Lagrangian description) or view the flow from a fixed position (Eulerian description). The novelty of our method lies in the use of non-singular mappings between these two descriptions, in which all fields are solved simultaneously and which allow the method to be fully implicit. At the same time, we use high-order (fourth-order) finite differences or spectral Chebyshev collocation to discretise the transformed domains. Thus, while there are other such monolithic methods (e.g. Hron & Turek 2006; Ryzhakov *et al.* 2020), we are able to construct a stable method with high spatial accuracy. The numerical method used herein is well suited for solving other fluid–structure interaction problems (e.g. Bungartz & Schäfer 2006) since it can handle large deformation of the solid with the help of these non-singular mappings; many standard implementations of fluid–structure interaction fail due to excessive mesh deformation.

The model predicts that at least one steady configuration of the system exists for all values of the parameters. For sufficiently large Reynolds numbers the system exhibits three co-existing steady states for a narrow range of the parameters. These states are connected by a pair of limit points, similar to earlier predictions using more approximate models (Luo & Pedley 2000; Stewart 2017) with two stable configurations (figures 4, 9): an upper branch (where the channel wall is entirely inflated) and a lower branch (where the channel wall is collapsed). Beyond the upper limit point the system transitions (dynamically) from the upper branch of steady solutions to the lower, where the wall profile becomes increasingly collapsed, the flow separates beyond the constriction and a low pressure vortex is shed into the downstream rigid segment (figure 6); such an observation has many similarities to swirling flows in pipes and open jets (Lopez 1994; Shtern & Hussain 1996; Herrada *et al.* 2003).

Similar to previous studies (Heil 2004; Stewart 2017), we found an instability of the lower branch of steady solutions via a Hopf bifurcation when either the Reynolds number or the external pressure becomes sufficiently large (figures 8, 10). For the parameter values considered in this study we did not observe the neutral stability curve entering the region

of multiple steady states. However, in line with observations of Stewart (2017), we expect that the neutral stability curve will eventually terminate when it intersects the line of limit points along the lower branch of steady solutions.

However, our model also predicted that the upper branch of steady solutions could become unstable via a Hopf bifurcation to an entirely separate branch of mode-2 instabilities when the pre-tension is sufficiently low (figure 10). Note that an analogous instability of the upper branch has very recently been found in a model of Newtonian flow in a collapsible channel with a nonlinear elastic beam (Wang *et al.* 2021a). The fully developed limit cycle of our upper branch oscillations bears many similarities to those described by Wang *et al.* (2021a), exhibiting a hump propagating upstream along the compliant segment and interacting with flow in the upstream rigid segment (figure 12); however, in our oscillations the hump is reflected by the upstream rigid segment and the flow sheds a low pressure vortex which drives a vorticity wave into the downstream rigid segment (Stephanoff *et al.* 1983; Pedley & Stephanoff 1985).

Our new hyperelastic formulation provides an opportunity to investigate the role of wall thickness on the onset of instability. Previous studies of flow in thick-walled tubes or channels have been restricted to steady configurations (Marzo *et al.* 2005; Zhang *et al.* 2018), while unsteady systems have typically considered asymptotically thin walls (Luo & Pedley 1996; Jensen & Heil 2003; Luo *et al.* 2008). We found that, in the absence of wall inertia, increasing the wall thickness alone makes negligible difference to either the steady solutions (figure 13a,b) or the onset of oscillations (figures 13c,d, 14) until the wall thickness becomes comparable to the channel thickness (in this case the aspect ratio of the wall is relatively small  $h/L \lesssim 0.2$  and so thin-wall approximations are still appropriate). For even larger wall thicknesses the critical pressure for the onset of instability is significantly increased compared with the thin walls (figure 14), while the oscillation frequency is decreased (figure 14b). Furthermore, for the largest wall thickness considered the critical external pressure and oscillation frequency both saturate as the Reynolds number becomes large (figure 14).

The dimensionless parameter  $\hat{\rho}$  describes the strength of wall inertia compared with the internal elastic stress, but also represents an eigen-frequency of the elastic wall compared with the characteristic (inverse) time scale of the flow past the elastic wall. It is therefore important to characterise how these natural frequencies of wall vibration correlate to the other modes of self-excited oscillation of this system. Wall mass also plays an important role in physiological applications such as human phonation (Mittal, Erath & Plesniak 2013). We found that increasing the wall inertia parameter promotes the onset of self-excited oscillation by enlarging the unstable region of the primary (mode-2) global instability in the space spanned by Reynolds number and external pressure (figure 16); inertia-driven destabilisation was previously noted by Luo & Pedley (1998). In addition, increasing the wall inertia parameter also destabilises higher-frequency modes of instability, which eventually dominate the primary global instability as the wall inertia parameter increases (figure 16), again consistent with the observations of Luo & Pedley (1998). However, it turns out that the value of the parameter  $\hat{\rho}$  is typically small for the silicone rubber tubes used in Starling resistor experiments; these tubes have been estimated to have a Young's modulus and Poisson ratio of  $E = 3.8$  MPa and  $\nu = 0.423$ , respectively (Bertram 1987), resulting in a shear modulus of  $\mu_2 = 1.335$  MPa (assuming an isotropic material). Silicone rubber also has an average density of  $\rho_2 = 1240$  kg m<sup>-3</sup>. Starling resistor experiments in a tube with internal diameter 12 mm and a flow rate of the order of 60 ml s<sup>-1</sup> (Bertram & Tscherry 2006), exhibit a flow velocity of approximately 0.531 m s<sup>-1</sup>. Flow of this velocity in a channel of thickness 1 mm corresponds to a flow

rate per unit length in the out-of-plane direction of  $q = 5.31 \times 10^{-4} \text{ m}^2 \text{ s}^{-1}$ . Using all this information, we estimate  $\hat{\rho} \approx 2.62 \times 10^{-4} \ll 1$  for a compliant channel formed from silicone rubber.

Our hyperelastic formulation assumed first-order elasticity, with elastic stress proportional to the gradient of the strain energy function with respect to the strain tensor. We imposed lateral boundary conditions of no displacement along the face of the elastic solid in contact with the rigid wall. This approach cannot reproduce the resistance to bending of an elastic beam, since this would require strain gradient (second-order) elasticity, where the elastic stress has additional contributions due to the derivative of the strain energy function with respect to the strain gradient tensor; this approach would also require additional boundary conditions at the edges of the compliant segment. Indeed, Luo and coworkers considered a collapsible channel model where the (asymptotically thin) elastic wall exhibited resistance to both bending and stretching but no pre-tension, imposing clamped and zero slope conditions at each end of the flexible wall (Luo *et al.* 2008; Wang *et al.* 2021a,b). Their wall profiles accommodated this zero slope condition over very narrow boundary layers at each end of the compliant segment (see examples in Wang *et al.* 2021a). Furthermore, Wang *et al.* (2021b) noted that increasing the resistance to bending of the beam narrowed the region of multiple steady states, and eventually suppressed the onset of self-excited oscillation. Similar to the present study, the model of Wang *et al.* (2021a,b) predicted self-excited oscillations growing from both the upper and lower branches of static solutions. However, their lower branch oscillations were typically of higher frequency and re-stabilised for sufficiently large external pressure (Wang *et al.* 2021b) (contrary to the present system where lower branch instability persisted as the external pressure increased, figures 8, 10). Both systems exhibited an upper branch instability of  $O(1)$  frequency, but in Wang *et al.* (2021a,b) the unstable zone remained localised to the neighbourhood of the upper branch limit point (contrary to the present system where the upper branch instability persisted to low external pressures, figure 10). However, it is unclear if these discrepancies are due to the differences in the constitutive assumptions between the two systems, or due to the absence of pre-tension in the work of Wang *et al.* (2021a,b). A more expansive comparison will be pursued in future work.

**Supplementary movie.** Supplementary movie is available at <https://doi.org/10.1017/jfm.2021.1131>.

**Acknowledgements.** Helpful discussions with Professor J.H. Snoeijer (University of Twente) are very gratefully acknowledged. We are very grateful to Professor M. Heil (University of Manchester) for providing the data used to plot figure 3(b).

**Funding.** M.A.H. and S.B.T. acknowledge funding from the Spanish Ministry of Economy, Industry and Competitiveness under Grants DPI2016-78887 and PID2019-108278RB and from the Junta de Andalucía under Grant P18-FR-3623. P.S.S. acknowledges funding from Engineering and Physical Sciences Research Council (UK) grants EP/P024270/1, EP/N014642/1 and EP/S030875/1.

**Declaration of interests.** The authors report no conflict of interest.

**Supporting data.** Supporting data for this paper can accessed at <https://dx.doi.org/10.5525/gla.researchdata.1113>.

#### Author ORCIDs.

-  M.A. Herrada <https://orcid.org/0000-0003-0388-8001>;
-  J. Eggers <https://orcid.org/0000-0002-0011-5575>;
-  P.S. Stewart <https://orcid.org/0000-0002-0971-8057>.

$\xi_1$	$\xi_2$	$\chi_1$	$\chi_2$	$\hat{\omega}_r$	$\hat{\omega}_i$
<b>641</b>	<b>201</b>	<b>19</b>	<b>14</b>	<b>1.052</b>	<b>0.0232</b>
641	201	19	19	1.054	0.02229
641	201	25	14	1.053	0.02404
641	201	25	19	1.055	0.02314
721	226	19	14	1.051	0.02064
721	226	25	14	1.051	0.02140
801	251	21	19	1.054	0.02239

Table 1. Mesh sensitivity for an unstable case on the upper branch of steady solutions for a thin wall ( $\hat{e} = 0.01$ ) with no wall inertia ( $\hat{\rho} = 0$ ), listing the real and imaginary parts as a function of the discretisation parameters  $\xi_1$ ,  $\xi_2$ ,  $\chi_1$  and  $\chi_2$ . The row listed in bold corresponds to the parameters used for the simulations in the main text. Here  $\hat{T}_0 = 5$ ,  $\hat{p}_{ext} = 0.82$  and  $Re = 400$ .

### Appendix. Convergence study of the numerical method

To illustrate the mesh independence of the numerical results we compute the real and imaginary components of the eigenvalue  $\hat{\omega}$  obtained from the global linear stability eigensolver for different discretisations of the domain, changing the number of mesh points  $\xi_1$ ,  $\xi_2$ ,  $\chi_1$  and  $\chi_2$  (listed in § 2.2). A typical example for an unstable point on the upper branch of steady solutions is provided in table 1, where we find that the real and imaginary parts of  $\hat{\omega}$  show only negligible variations as the mesh is refined. The data listed in boldface correspond to the numerical mesh used in this work.

### REFERENCES

- ARMITSTEAD, J.P., BERTRAM, C.D. & JENSEN, O.E. 1996 A study of the bifurcation behaviour of a model of flow through a collapsible tube. *Bull. Math. Biol.* **58** (4), 611–641.
- BASTING, S., QUAINI, A., CANIC, S. & GLOWINSKI, R. 2017 Extended ALE method for fluid-structure interaction problems with large structural displacements. *J. Comput. Phys.* **331**, 312–336.
- BERTRAM, A. & FOREST, S. 2020 *Mechanics of Strain Gradient Materials*. Springer.
- BERTRAM, C.D. 2003 Experimental studies of collapsible tubes. In *Flow Past Highly Compliant Boundaries and in Collapsible Tubes* (ed. P.W. Carpenter & T.J. Pedley), pp. 51–65. Springer.
- BERTRAM, C.D. & CASTLES, R.J. 1999 Flow limitation in uniform thick-walled collapsible tubes. *J. Fluids Struct.* **13** (3), 399–418.
- BERTRAM, C.D. & PEDLEY, T.J. 1982 A mathematical model of unsteady collapsible tube behaviour. *J. Biomech.* **15** (1), 39–50.
- BERTRAM, C.D. 1987 The effects of wall thickness, axial strain and end proximity on the pressure-area relation of collapsible tubes. *J. Biomech.* **20** (9), 863–876.
- BERTRAM, C.D., RAYMOND, C.J. & BUTCHER, K.S.A. 1989 Oscillations in a collapsed-tube analog of the brachial artery under a sphygmomanometer cuff. *Trans. ASME J. Biomech. Engng* **111** (3), 185–191.
- BERTRAM, C.D., RAYMOND, C.J. & PEDLEY, T.J. 1990 Mapping of instabilities for flow through collapsed tubes of differing length. *J. Fluids Struct.* **4** (2), 125–153.
- BERTRAM, C.D., RAYMOND, C.J. & PEDLEY, T.J. 1991 Application of nonlinear dynamics concepts to the analysis of self-excited oscillations of a collapsible tube conveying a fluid. *J. Fluids Struct.* **5** (4), 391–426.
- BERTRAM, C.D. & TSCHERRY, J. 2006 The onset of flow-rate limitation and flow-induced oscillations in collapsible tubes. *J. Fluids Struct.* **22** (8), 1029–1045.
- BUNGARTZ, H.J. & SCHÄFER, M. 2006 *Fluid-Structure Interaction: Modelling, Simulation, Optimisation*. Springer.
- CAI, Z.X. & LUO, X.Y. 2003 A fluid-beam model for flow in a collapsible channel. *J. Fluids Struct.* **17** (1), 125–146.
- DIMAKOPOULOS, Y. & TSAMOPOULOS, J. 2003 A quasi-elliptic transformation for moving boundary problems with large anisotropic deformations. *J. Comput. Phys.* **192** (2), 494–522.

- DONEA, J., HUERTA, A., PONTHOT, J.-PH. & RODRIGUEZ-FERRAN, A. 2004 Arbitrary Lagrangian–Eulerian methods. In *Encyclopedia of Computational Mechanics*. John Wiley and Sons. <https://doi.org/10.1002/0470091355.ecm009>.
- EGGERS, J., HERRADA, M.A. & SNOEIJER, J.H. 2020 Self-similar breakup of polymeric threads as described by the Oldroyd-B model. *J. Fluid Mech.* **887**, A19.
- GAVRIELY, N., SHEE, T.R., CUGELL, D.W. & GROTBORG, J.B. 1989 Flutter in flow-limited collapsible tubes: a mechanism for generation of wheezes. *J. Appl. Physiol.* **66** (5), 2251–2261.
- GLENDINNING, P. 1994 *Stability, Instability and Chaos: An Introduction to the Theory of Nonlinear Differential Equations*, vol. 11. Cambridge University Press.
- GROTBORG, J.B. & JENSEN, O.E. 2004 Biofluid mechanics in flexible tubes. *Annu. Rev. Fluid Mech.* **36**, 121–147.
- GUNERATNE, J.C. & PEDLEY, T.J. 2006 High-Reynolds-number steady flow in a collapsible channel. *J. Fluid Mech.* **569**, 151–184.
- HEIL, M. 2004 An efficient solver for the fully coupled solution of large-displacement fluid-structure interaction problems. *Comput. Meth. Appl. Mech. Engng* **193** (1–2), 1–23.
- HEIL, M. & BOYLE, J. 2010 Self-excited oscillations in three-dimensional collapsible tubes: simulating their onset and large-amplitude oscillations. *J. Fluid Mech.* **652**, 405–426.
- HEIL, M. & HAZEL, A.L. 2011 Fluid-structure interaction in internal physiological flows. *Annu. Rev. Fluid Mech.* **43**, 141–162.
- HERRADA, M.A. & MONTANERO, J.M. 2016 A numerical method to study the dynamics of capillary fluid systems. *J. Comput. Phys.* **306**, 137–147.
- HERRADA, M.A., PÉREZ-SABORID, M. & BARRERO, A. 2003 Vortex breakdown in compressible flows in pipes. *Phys. Fluids* **15** (8), 3468–3477.
- HIRT, C.W., AMSDEN, A.A. & COOK, J.L. 1974 An arbitrary Lagrangian–Eulerian computing method for all flow speeds. *J. Comput. Phys.* **14**, 227–253.
- HRON, J. & TUREK, S. 2006 A monolithic FEM/multigrid solver for an ALE formulation of fluid-structure interaction with applications in biomechanics. In *Fluid-Structure Interaction*, Lecture Notes in Computational Science and Engineering, vol. 53, pp. 146–170. Springer.
- HUANG, L. 2001 Viscous flutter of a finite elastic membrane in Poiseuille flow. *J. Fluids Struct.* **15**, 1061–1088.
- JENSEN, O.E. 1990 Instabilities of flow in a collapsed tube. *J. Fluid Mech.* **220**, 623–659.
- JENSEN, O.E. & HEIL, M. 2003 High-frequency self-excited oscillations in a collapsible-channel flow. *J. Fluid Mech.* **481**, 235–268.
- KAMRIN, K., RYCOFT, C.H. & NAVE, J.C. 2012 Reference map technique for finite-strain elasticity and fluid-solid interaction. *J. Mech. Phys. Solids* **60** (11), 1952–1969.
- KNOWLTON, F.P. & STARLING, E.H. 1912 The influence of variations in temperature and blood-pressure on the performance of the isolated mammalian heart. *J. Physiol.* **44** (3), 206.
- LOPEZ, J.M. 1994 On the bifurcation structure of axisymmetric vortex breakdown in a constricted pipe. *Phys. Fluids* **6** (11), 3683–3693.
- LUO, X.Y., CAI, Z.X., LI, W.G. & PEDLEY, T.J. 2008 The cascade structure of linear instability in collapsible channel flows. *J. Fluid Mech.* **600**, 45–76.
- LUO, X.Y. & PEDLEY, T.J. 1995 A numerical simulation of steady flow in a 2-D collapsible channel. *J. Fluids Struct.* **9** (2), 149–174.
- LUO, X.Y. & PEDLEY, T.J. 1996 A numerical simulation of unsteady flow in a two-dimensional collapsible channel. *J. Fluid Mech.* **314**, 191–225.
- LUO, X.Y. & PEDLEY, T.J. 1998 The effects of wall inertia on flow in a two-dimensional collapsible channel. *J. Fluid Mech.* **363**, 253–280.
- LUO, X.Y. & PEDLEY, T.J. 2000 Multiple solutions and flow limitation in collapsible channel flows. *J. Fluid Mech.* **420**, 301–324.
- MARZO, A., LUO, X.Y. & BERTRAM, C.D. 2005 Three-dimensional collapse and steady flow in thick-walled flexible tubes. *J. Fluids Struct.* **20** (6), 817–835.
- MITTAL, R., ERATH, B.D. & PLESNIAK, M.W. 2013 Fluid dynamics of human phonation and speech. *Annu. Rev. Fluid Mech.* **45**, 437–467.
- PEDLEY, T.J. 1992 Longitudinal tension variation in collapsible channels: a new mechanism for the breakdown of steady flow. *Trans. ASME J. Biomech. Engng* **114** (1), 60–67.
- PEDLEY, T.J. & STEPHANOFF, K. 1985 Flow along a channel with a time-dependent indentation in one wall: the generation of vorticity waves. *J. Fluid Mech.* **160**, 337–367.
- PIHLER-PUZOVIĆ, D. & PEDLEY, T.J. 2013 Stability of high-Reynolds-number flow in a collapsible channel. *J. Fluid Mech.* **714**, 536–561.
- PIHLER-PUZOVIĆ, D. & PEDLEY, T.J. 2014 Flutter in a quasi-one-dimensional model of a collapsible channel. *Proc. R. Soc. Lond. A* **470** (2166), 20140015.



- PONCE-TORRES, A., RUBIO, M., HERRADA, M.A., EGGERS, J. & MONTANERO, J.M. 2020 Influence of the surface viscous stress on the pinch-off of free surfaces loaded with nearly-inviscid surfactants. *Sci. Rep.* **10** (1), 16065.
- RYZHAKOV, P.B., ROSSI, R., IDELSOHN, S.R. & ONATE, E. 2020 A monolithic Lagrangian approach for fluid–structure interaction problems. *Comput. Mech.* **46**, 883–899.
- SHAPIRO, A.H. 1977 Steady flow in collapsible tubes. *Trans. ASME J. Biomech. Engng* **99** (3), 126–147.
- SHTERN, V. 2018 Models of fold-related hysteresis. *Phys. Fluids* **30** (5), 2–7.
- SHTERN, V. & HUSSAIN, F. 1996 Hysteresis in swirling jets. *J. Fluid Mech.* **309**, 1–44.
- SNOEIJER, J.H., PANDEY, A., HERRADA, M.A. & EGGERS, J. 2020 The relationship between viscoelasticity and elasticity. *Proc. R. Soc. Lond. A* **476**, 20200419.
- STEPHANOFF, K., PEDLEY, T.J., LAWRENCE, C. & SECOMB, T.W. 1983 Fluid flow along a channel with an asymmetric oscillating constriction. *Nature* **305**, 692–695.
- STEWART, P.S. 2010 Flows in flexible channels and airways. PhD thesis, University of Nottingham.
- STEWART, P.S. 2017 Instabilities in flexible channel flow with large external pressure. *J. Fluid Mech.* **825**, 922–960.
- STEWART, P.S., HEIL, M., WATERS, S.L. & JENSEN, O.E. 2010 Sloshing and slamming oscillations in a collapsible channel flow. *J. Fluid Mech.* **662**, 288–319.
- STEWART, P.S., WATERS, S.L. & JENSEN, O.E. 2009 Local and global instabilities of flow in a flexible-walled channel. *Eur. J. Mech. (B/Fluids)* **28** (4), 541–557.
- WALTERS, M.C., HEIL, M. & WHITTAKER, R.J. 2018 The effect of wall inertia on high-frequency instabilities of flow through an elastic-walled tube. *Q. J. Mech. Appl. Maths* **71** (1), 47–77.
- WANG, D., LUO, X.Y. & STEWART, P.S. 2021a Energy analysis of collapsible channel flow with a nonlinear fluid-beam model. *J. Fluid Mech.* **926**, A2.
- WANG, D., LUO, X.Y. & STEWART, P.S. 2021b Multiple steady and oscillatory solutions in a collapsible channel flow. *Intl J. Appl. Mech.* **13** (4), 2150058.
- WHITTAKER, R.J., HEIL, M., JENSEN, O.E. & WATERS, S.L. 2010 Predicting the onset of high-frequency self-excited oscillations in elastic-walled tubes. *Proc. R. Soc. Lond. A* **466** (2124), 3635–3657.
- XU, F., BILLINGHAM, J. & JENSEN, O.E. 2013 Divergence-driven oscillations in a flexible-channel flow with fixed upstream flux. *J. Fluid Mech.* **723**, 706–733.
- XU, F., BILLINGHAM, J. & JENSEN, O.E. 2014 Resonance-driven oscillations in a flexible-channel flow with fixed upstream flux and a long downstream rigid segment. *J. Fluid Mech.* **746**, 368–404.
- XU, F. & JENSEN, O.E. 2015 A low-order model for slamming in a flexible-channel flow. *Q. J. Mech. Appl. Maths* **68** (3), 299–319.
- ZHANG, S., LUO, X.Y. & CAI, Z. 2018 Three-dimensional flows in a hyperelastic vessel under external pressure. *Biomech. Model. Mechanobiol.* **17** (4), 1187–1207.