



Cite this: *Soft Matter*, 2018, 14, 8344

Received 4th April 2018,
 Accepted 30th September 2018

DOI: 10.1039/c8sm00700d

rsc.li/soft-matter-journal

Opposed flow focusing: evidence of a second order jetting transition

Jun Dong,^{ib †*ab} Max Meissner,^{†ab} Malcolm A. Faers,^c Jens Eggers,^d
 Annela M. Seddon^{abe} and C. Patrick Royall^{ibf}

We propose a novel microfluidic “opposed-flow” geometry in which the continuous fluid phase is fed into a junction in a direction opposite to the dispersed phase. This pulls out the dispersed phase into a micron-sized jet, which decays into micron-sized droplets. As the driving pressure is tuned to a critical value, the jet radius vanishes as a power law down to sizes below 1 μm . By contrast, the conventional “coflowing” junction leads to a first order jetting transition, in which the jet disappears at a finite radius of several μm , to give way to a “dripping” state, resulting in much larger droplets. We demonstrate the effectiveness of our method by producing the first microfluidic silicone oil emulsions with a sub micron particle radius, and utilize these droplets to produce colloidal clusters.

1 Introduction

The controllable production of micron scale emulsions is an area of highly active research. Allowing extreme reductions in sample volumes, microdroplets currently find use across both fundamental research and industrial applications. One promising manufacturing method for these droplets is microfluidic emulsification.¹ Offering unparalleled control over droplet formation, microfluidic emulsification systems find use across applications as diverse as the generation of artificial cells,² high-throughput screening of patient samples,^{3–6} colloidal model systems,⁷ or even traffic dynamics.⁸

Conventionally, droplet generation in a microfluidic device is achieved *via* three main geometries as shown in Fig. 1: (a) T-junctions in which viscous shear stress at one fluid interface pulls off droplets into the flow of a second immiscible fluid,⁹ (b) coflowing devices where an outer continuous phase fluid flows parallel to and surrounding an inner dispersed phase fluid until droplet generation occurs *via* stretching of the fluid interface,¹⁰ and flow-focusing devices, where the interface between coflowing streams are forced through a flow constriction causing droplet breakup through the generation of a velocity gradient.¹¹

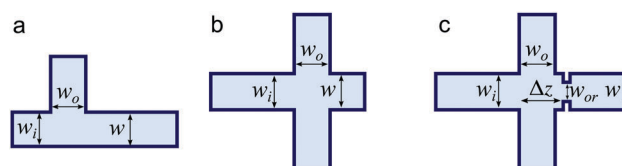


Fig. 1 Example geometries used in microfluidic devices. (a) T-junction device, (b) a coflow device, and (c) a flow focusing device.

However, while these methods can effectively produce droplets with sizes below 100 μm , the production of true micro-droplets with sizes below 10 μm in diameter *via* microfluidic means remains a significant challenge. Typical droplet sizes realized in previous microfluidic setups are summarized in Table 1. To produce smaller droplets, one possibility is to reduce the size of the microfluidic device, but this is limited by the resolution of the manufacturing process available.¹² In addition, small channel sizes lead to both large velocity gradients and large pressure gradients needed to drive the flow. Furthermore, smaller device sizes lead to a significant increase in the surface area to volume ratio of the fluids, and thus a larger dependence on the chemical compatibility of the fluids. As a result, emulsification on the micron scale remains a largely unexplored field for oil-in-water systems in particular.

Attempts to overcome this size limitation include methods of switching to more robust materials such as Norland optical adhesives,⁷ using coaxial jets,²³ or utilizing electric fields to induce electro-hydrodynamic jetting.^{24,25} While each of these methods begins to address the problem in their individual way, they all carry significant limitations in their suitability. Here we pursue the alternative route of using suitably chosen flow characteristics to focus the inner phase into a very thin jet, whose radius is largely decoupled from the size of the device.

^a H. H. Wills Physics Laboratory, University of Bristol, Bristol, BS8 1TL, UK.
 E-mail: jun.dong@bristol.ac.uk

^b Centre for Nanoscience and Quantum Information, Tyndall Avenue, Bristol, BS8 1FD, UK

^c Bayer AG, Alfred Nobel Str. 50, 40789 Monheim, Germany

^d Mathematics Department, University of Bristol, BS8 1TW, Bristol, UK

^e Bristol Centre for Functional Nanomaterials, University of Bristol, Bristol, BS8 1TL, UK

^f Chemistry Department, University of Bristol, Bristol, BS8 1TS, UK

† These authors contributed equally to this work.

Table 1 Comparison of microfluidic droplet generation methods

Droplet generation method	Emulsion type	Water droplet diameter (μm)	Oil droplet diameter (μm)
Geometric break-up	Water-in-oil ¹³	50	—
T-junction droplet generation	Water-in-oil ¹⁴ or oil-in-water ¹⁵	50	100
Capillary coflow droplet generation	Water-in-oil or oil-in-water ¹⁶	20	10
Partial wetting	Fluorinated oil in water ¹⁷	—	6
Dripping	Fluorinated oil in water ¹⁸	—	3
Flow focusing	Water-in-oil ¹¹ or oil-in-water ¹⁹	10	20
Flow focusing (converging and diverging nozzle)	Water-in-oil ²⁰	10	—
Flow focusing (flow films on needle)	Oil-in-air and oil-in-water ²¹	—	1
Tip-streaming	Water-in-oil ²²	3	—

Droplet production from a highly focused jet, also known as tip streaming, is a flow mode in which a thin jet emerges from a nearly conical point.^{26–31} The jet is subject to the Rayleigh–Plateau instability,³² and decays into droplets further downstream, whose sizes are set by the radius of the jet. However, the circumstances under which such a jet is produced are not understood, and depend crucially on the confined flow conditions realizable in a microfluidic device.³¹ In unbounded flows produced by a four-roll mill, G. I. Taylor²⁶ was able to deform the end of a drop into a conical tip, yet tip streaming occurred only when a small amount of surfactant was added. As the system was drained of surfactant, the jet disappeared once again.

A similar phenomenon was observed in the selective withdrawal geometry, in which an upper fluid phase is withdrawn through a nozzle from near the interface between two fluids layered atop of one another.^{33,34} As the flow rate is slowly increased, the interface is deformed into an increasingly sharp “hump”. When the tip of the hump has reached a radius of curvature of about 200 μm , it transitions toward a “spout”, in which a thin jet is entrained into the nozzle; with increasing flow rate, the jet becomes thicker.

However, there is hysteresis in the system: one needs to go to lower flow rates for the spout to disappear than those at which the spout was first formed. Thus this system bears the characteristics of a first order transition, in analogy with phase transitions:^{35,36} firstly, it is discontinuous, in that the jet radius jumps from zero (no jet) to a finite value, and *vice versa*. Secondly, there is hysteresis, in that the values of the control parameter are different depending on whether one passes from jet to no jet or *vice versa*. Both the hump and the spout states are characterized by a power-law dependence of their characteristic sizes as the control parameter approaches a critical value. This indicates that one is close to a second order transition, in which the characteristic size goes to zero. Hence the difference between jet and no jet disappears, and in the spirit of Landau theory³⁵ the transition becomes continuous or of second order.

The aim of this paper is to use the precise control over the flow field made possible by microfluidics in order to realize this hypothetical second order transition. As the difference between the two states vanishes at a second order transition, we also expect there to be no hysteresis in that case. Achieving a second order transition would mean that the length scale of the jet is

no longer set by the size of the microfluidic setup, but rather by our ability to tune the flow parameters close to the transition.

Recently, there has been some progress describing the formation of narrow tips and thin jets in microfluidic devices, both experimentally and computationally.^{28,29,31,37} Usually this is achieved by extracting the dispersed fluid from a nozzle with an exterior phase flowing in the same direction (the coflowing configuration). In this situation the “jetting” state, which allows for the formation of the smallest drops, competes with a “dripping” state, characterized by the periodic formation of individual drops from near the nozzle opening.^{11,23,28,38,39}

This is what is known as an “absolute instability”,^{40,41} in that breakup occurs in the frame of reference of the nozzle. By contrast, drop formation from the jet occurs by a “convective instability”, which grows in a frame of reference convected with the flow. Numerical calculations in simple flow geometries have confirmed the possibility of creating thin jets from the tip of conical points.^{27,30} However, jet radii have not been reported in a systematic fashion; in particular, the crucial question of what limits the size of the smallest jet has not been addressed.

A nonlinear analysis of tip streaming²⁹ uses slender body theory to find jetting states which continue to a vanishing radius. The limiting state at vanishing flux of the inner fluid is the conical solution first found by G. I. Taylor.⁴² However, as shown in ref. 43, this solution breaks down if the full axisymmetric Stokes equation is considered, calling into question the basis of this analysis. Another approach uses linear stability analysis of a jet^{23,28,44} to find that jetting occurs above a critical capillary number between 0.1 and 1, which depends on the viscosity ratio between the two fluids alone, independent of the size of the jet. However, stability of the jet is only a necessary condition for jetting to occur; the analysis certainly cannot capture the influence of geometry on the transition, as we do. A notable exception is a recent global stability analysis of aerodynamic flow focusing,⁴⁴ which could be extended to study the effect of geometry.

In this paper, we contrast jetting in the conventional coflowing geometry with a novel opposed flow geometry. For each geometry, we systematically vary parameters to reduce the flux of the dispersed phase, to study the behavior of the system as the jet radius goes to zero. In agreement with previous results, we find in the former case that the smallest jet size is limited by transition to a dripping state. In the opposed flow geometry, on the other hand, dripping is suppressed, and the smallest jet

size of about 1 μm appears to be limited only by our ability to adjust parameters close to a second order transition. This represents a significant improvement over droplet sizes of 10 μm typically available from conventional flow focusing and opens the way to even smaller droplets than those we have produced here. There is a curious analogy here with,³⁷ where an opposing flow has been shown to produce small scales, although the parameter ranges are very different. The droplets produced in the opposed flow geometry are small enough so that they are susceptible to the thermal energy of the system, *i.e.* they are colloidal. Assemblies of such droplets have a well-defined thermodynamic state and thus can explore their ground state, *i.e.* the minimum energy structural conformations under a given effective interaction potential between the droplets.⁴⁵

One experimental system where the size of these droplets can be readily exploited is the study of colloidal clusters. Displaying structural ordering rather different from that of bulk materials, colloidal clusters represent one of the clearest links between local geometry and bulk condensed matter.⁴⁶ In particular, due to the five-fold symmetry found in structures such as icosahedral and decahedral, colloidal clusters can act as model systems for both biological systems such as viral capsids, or materials such as glassy states where colloidal model systems have led to great insight into how atoms self-organize into (free) energy minimizing locally favored structures.^{46–49} We demonstrate the utility of the droplets produced *via* our opposed flow-focusing methods by producing colloidal clusters of droplets *via* the addition of a depletion potential.

This paper is organized as follows: in Section 2 the experimental details and protocols will be described. In Section 3 we contrast the two flow geometries, and discuss their scaling properties in detail. As a potential application, we demonstrate the formation of colloidal clusters. We conclude by summarizing our findings and exploring their implications.

2 Materials and methods

2.1 Device assembly

Device patterns were fabricated as SU-8 on silicon wafers using standard photolithographic methods. Device molds were treated with trichloro(1*H*,1*H*,2*H*,2*H*-perfluorooctyl) silane to allow easy siloxane lift-off. Polydimethylsiloxane (PDMS) was mixed up in a 10:1 ratio of elastomer to curing agent (Sylgard 184). The mixed silicone elastomer was degassed, and approximately 20 g was poured on the silicon wafers, degassed a second time to remove any remaining bubbles, and heat cured at 60 °C for 6 hours. Once cured, PDMS layers were cut to shape and carefully removed from the silicon wafer. Tubing connectors were punched into the PDMS slabs using a 0.8 mm diameter biopsy punch. The cut and punctured PDMS was subsequently thoroughly washed with isopropanol to clean out any PDMS remnants from the puncturing process. The PDMS chips were then plasma treated for 30 s in a 100 W Diener plasma cleaner. Immediately following plasma treatment, the device chip was brought into contact with a similarly prepared glass microscope slide, bonding the activated surfaces together.

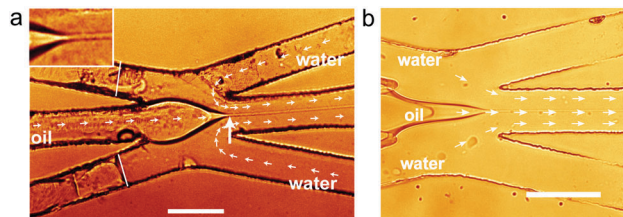


Fig. 2 Schematics of: (a) opposed flow system with an angle of 165° between the aqueous and oil flow. Inset shows close-up of jet. (b) Coflowing system with an angle of 15° between the aqueous and the oil flow. White lines show blocked channels. Scale bars represent 75 μm .

We consider two different flow geometries, as shown in Fig. 2, produced from the same device with a central straight oil channel, to which four water side channels are attached in an x-shaped configuration. Two of the side channels are not punctured during the fabrication process, and therefore are blocked when liquid flows through the device. In the opposed flow system, shown in Fig. 2(a), the oil channel is connected so that oil flows from the side of the blockage, so that the water channel makes a 165° angle with the oil channel. Fig. 2(b) shows the coflowing system, in which the oil comes from the direction of the open channels, leading to an angle of 15° between the aqueous and the oil flow.

2.2 PDMS surface coating

The hydrophobic surface properties of PDMS lead to clogging when producing oil-in-water emulsions. We overcome this difficulty by covering the PDMS with several layers of polymer coating,⁵⁰ which were applied by flowing alternating polymer electrolyte solutions through the channel by use of a syringe pump. Layers were applied as follows: first 4 μl of poly(allylamine hydrochloride) (PAH), a positively charged electrolyte, was inserted into the channel, so that it coated the negatively charged PDMS surfaces. This was followed by depositing the same volume of poly(sodium 4-styrenesulfonate) (PSS), a negatively charged electrolyte, onto the PAH layer. In total, four layers of PAH and PSS were applied to the PDMS surfaces. In between polymer electrolyte segments, 2 μl of NaCl solution was flushed through the channels to remove excess charge. The solutions of PAH and PSS were used at the same concentration of 0.1% w/v in 0.5 M NaCl, and the concentration of the NaCl solution used for washing in between the polymer segments was 0.1 M. These segments were loaded into a length of tubing, and flushed through the PDMS device at a flow rate of 50 $\mu\text{l h}^{-1}$.

2.3 Droplet and jet production

Jetting experiments were carried out by connecting the assembled PDMS chip to a pressure pump (Fluigent MFCS) with polyethylene tubing. Silicone oil (shear viscosity 4.57 mPa s) dyed with Nile Red was used as the dispersed phase and the continuous phase was a mixture of water and glycerol (30:70 wt%) with viscosity 23 mPa s. This leads to a viscosity ratio of outer to inner phase $\eta_o/\eta_i = 5.0$, more viscous fluid of continuous phase is required for flow focusing to occur under the pressures we

applied in the experiments. In order to produce a stable jet, we reduced the surface tension by adding the maximal soluble concentration of 21 mM of sodium dodecyl sulfate (SDS) to the aqueous phase. As this is several times the critical micelle concentration (CMC),⁵¹ we believe that (a) desorption of surfactant at the interface is suppressed, and (b) replacement of surfactant at the interface is fast enough that the surface tension can be considered constant.³¹

The driving pressure was controlled using MaesFlo 3.2 software (Fluigent, Paris, France). Pressures were adjusted until the oil flow was stable and producing droplets, as shown in Fig. 2 for the opposed flow (left) and coflowing geometries (right). Once stable droplet formation was achieved, flow parameters were adjusted by either holding the external pressure constant and varying the internal pressure, or *vice versa*. Between measurements, we waited for 15 s after changing the pressure for the jet to stabilize, after which there were no noticeable jet size variations. The former mode of control is illustrated in Fig. 3 and 4 for the opposed flow geometry. As the internal pressure is lowered, the jet radius becomes very thin, and the oil drop near the nozzle exit assumes an almost conical shape, from which the jet emerges. In Fig. 4(a), each color represents the jet radius a as the inner phase pressure is decreased, while the outer phase pressure was held fixed at a certain value from 1034 to 700 mbar. The pressure of 1034 mbar is the upper limit of the pressure pump, while 700 mbar of external pressure is a value slightly higher than the minimum value for flow focusing to occur. In Fig. 4(b) we show that all curves can be brought to a near collapse by plotting the radius as a function of the pressure ratio $R = p_i/p_o$, establishing that this ratio is the main parameter determining the state of the system. Since the pressure ratio R is less than 1, the minimum change of pressure is 1 mbar for both the internal and external pressure, by changing the same amount of pressure, the change of internal fluid will lead to a greater change in pressure ratio R and jet radius, comparing to tuning the external pressure. This explains the greater sensitivity to the internal pressure *versus* the external pressure shown in Fig. 4(a).

The jet radius *versus* pressure measurements were carried out under a Leica DMI3000B bright field microscope. Collected droplets were also characterized under the same microscope with image pixel size of 150 nm when using the $\times 40$ magnification lens.

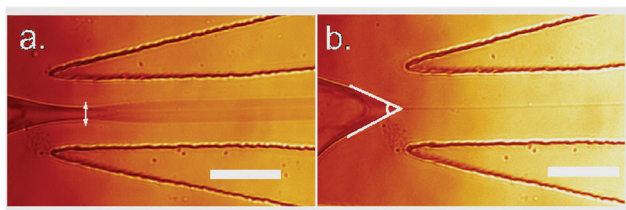


Fig. 3 Images of microfluidic devices with opposed flows showing measurement method for (a) the jet width and (b) the cone angle. The pressures of the liquid phases are 700 mbar external, 350 mbar internal, and 700 mbar external, 309 mbar internal, (a) and (b) respectively. Scale bars represent 50 μm .

2.4 Cluster formation

Droplets obtained *via* the opposed flow focusing geometry were formed into clusters *via* the addition of non-adsorbing polymers. To this end droplets approximately 1.5 μm in radius were produced, with the aqueous phase containing 6.34 mg ml^{-1} hydroxyethyl cellulose (HEC). With the radius of gyration of HEC being 50 nm, this leads to a colloid to polymer size ratio of approximately $q \approx 0.03$. Collection of the droplets was carried out with a fixed inner phase pressure of 275 mbar with the aqueous flows kept at 640 mbar. The resulting droplets were collected into a glass capillary and imaged under a confocal microscope (Leica SP-8) with excitation wavelength of 514 nm.

3 Results and discussion

Below we contrast the two geometries of coflow and opposed flow. In the coflowing geometry, the smallest attainable jet gives way to dripping, leading to a hysteretic first order transition. In the opposed flow geometry, the smallest jet size is limited only by our ability to control the pressure, leading to a state where flow ceases. Oil drops with radii below 1 μm , can be produced by this process. Here we show that such colloidal-sized droplets assemble into clusters with the addition of non-adsorbing polymers.

3.1 Coflowing jet formation

We begin with the conventional coflowing orientation in order to produce an oil jet from the drop attached to the nozzle, the aqueous flow channels making a 15° angle with the oil channel. By controlling the pressure ratio $R = p_i/p_o$ as detailed in the methods section above, stable droplet formation was induced in the microfluidic device. To characterize the size scaling with pressure ratio, the radius at the narrowest point of the jet was measured.

The raw data of jet radius a as a function of the inner flow (oil) pressure p_i is shown in Fig. 5(a), while the outer aqueous pressure was fixed at 700 mbar. Shown are three cycles during which p_i increases from zero until a jet is formed and subsequently increases in radius (blue symbols), followed by a sequence of measurements for decreasing p_i (red symbols). There is considerable scatter in the data between each cycle. In addition, for each cycle there is significant hysteresis in that a jet forms at a radius of about 5 μm , while the jet disappears only when the radius has decreases to about 2 μm . Just below the transition, the system is in the dripping mode, in which oil drops are produced directly from the nozzle in a periodic fashion. Upon further decrease of p_i , flow stops completely and the interface between oil and the aqueous phase assumes a rounded shape.

To test whether there is some indication of scaling in the coflowing data, in Fig. 5(b) we plotted the same radius data in a log-log plot as function of $(R - R_c)/R_c$. For each cycle, and for each data set going up or down, we adjusted a critical pressure ratio R_c such that we obtained a power-law fit

$$a = A(R - R_c)^z, \quad (1)$$

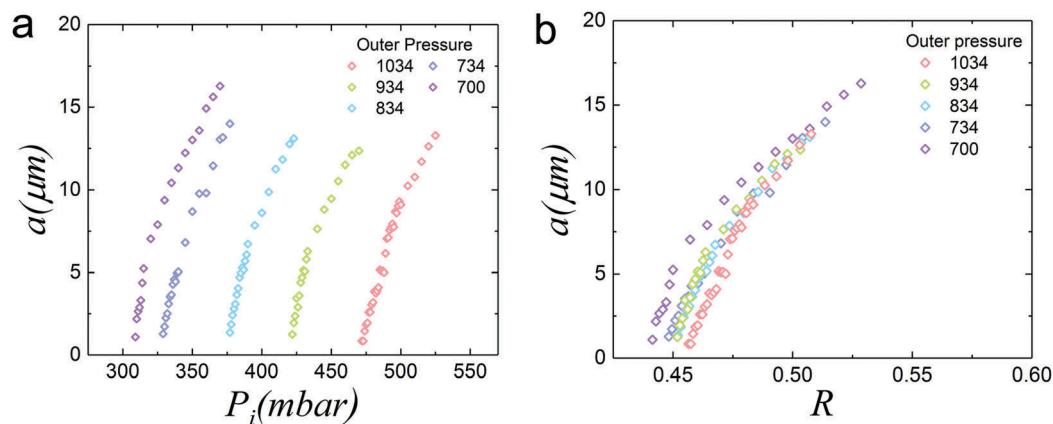


Fig. 4 Jet radius a as function of the outer and inner pressures in the opposed flow system. All pressures are given in mbar (a) jet radius versus inner pressure for various outer pressures. (b) Same data plotted against the pressure ratio $R = p_i/p_o$.

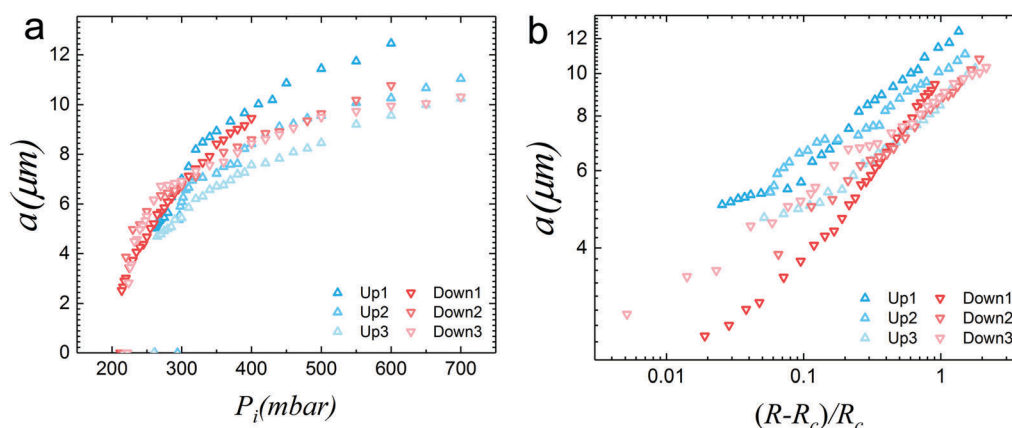


Fig. 5 In the coflowing geometry, the outer phase pressure was fixed at $p_o = 700$ mbar, the jet radius was measured while varying the inner oil phase pressure. 'Up' refers to an experimental run during which the inner pressure increases (increasing the jet radius), 'down' where the inner pressure decreases (decreasing the jet radius). 'Up' and 'down' processes were repeated three times to check the stability of the data. (a) Jet radius as a function of the inner oil pressure p_i , (b) log-log plot of the jet radius as function of $(R - R_c)/R_c$.

where A and the exponent α were also adjustable parameters. This means that R_c is the value of the pressure ratio at which the jet radius would vanish in a second order (continuous) transition. However, similar to measurements in the selective withdrawal geometry,^{33,34} scaling is cut off at finite a in a discontinuous transition. Scaling exponents also give inconsistent values and were found in the ranges $\alpha = 0.2$ – 0.24 in the "up" direction, and $\alpha = 0.22$ – 0.37 in the "down" direction.

3.2 Opposed flow jet formation

By inverting the flow direction of the oil, we now report results for the novel opposed flow geometry, in which the angle between the aqueous flow channel and the oil flow channel is 165° . In Fig. 6(a) we show the jet radius for three cycles of increasing jet radius and decreasing jet radius. This time, the inner oil phase pressure was fixed at $p_i = 275$ mbar, while the outer pressure p_o was varied. Hence during the "up" phase, p_o is decreased so as to increase R , while during the "down" phase p_o is increased. In the opposed flow geometry, there is very little hysteresis, and there is a much better collapse of the

data across the three cycles of varying the outer pressure. This is even clearer in the log-log plot of Fig. 6(b), where for each cycle and for each direction of increasing and decreasing p_o , we fitted the data to the power law (1). With the critical value R_c in hand, we plotted a against the critical pressure parameter $(R - R_c)/R_c$.

There is now little variation of the slope in each case; in the "up" direction we obtain values $\alpha = 0.55$ – 0.58 , in the "down" direction $\alpha = 0.54$ – 0.57 . Fitting to the data for all three cycles leads to an average exponent of $\alpha = 0.56$, shown as the straight line in Fig. 6(b). The smallest jets produced in the opposed flow geometry have a radius of about $0.5 \mu\text{m}$, this approaches the smallest droplets that can be produced in flow focusing devices, see Table 1. Similar size oil droplets were generated in a needle facilitated flow focusing system,²¹ even smaller droplets were only realised when dispersed phase is mercury in a double flow focusing set up.²³ One example of collected droplets from the device was characterized under the confocal microscope and is shown in Fig. 7(a), with mean radius of $1.2 \mu\text{m}$. We were unable to determine whether there remained a

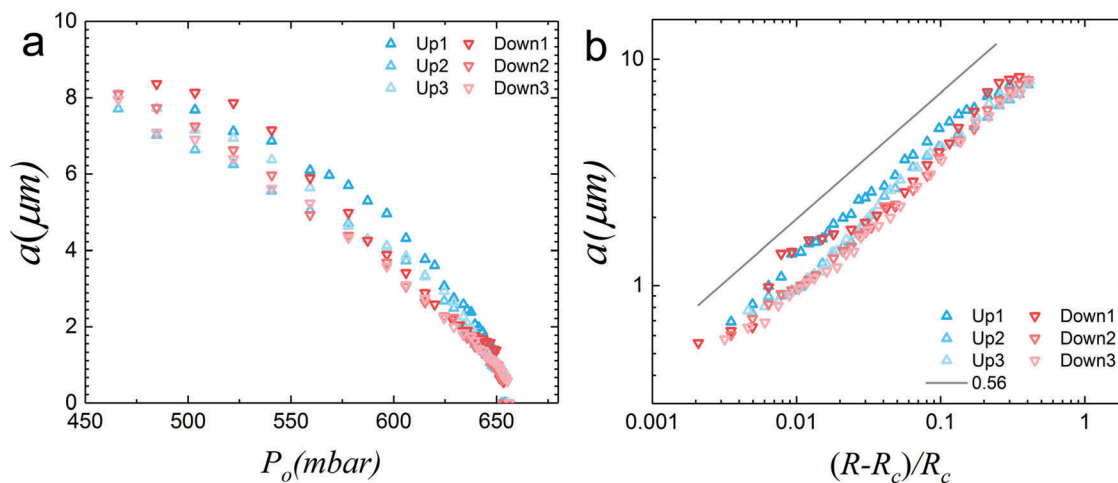


Fig. 6 In the opposed flow geometry, the inner oil phase pressure was fixed at $p_i = 275$ mbar, the jet radius was measured while varying the outer phase pressure. 'Up' refers to an experimental run during which the outer pressure decreases (increasing the jet radius), 'down' where the outer pressure increases (decreasing the jet radius). (a) Jet radius as a function of the outer aqueous pressure p_o . (b) log–log plot of jet radius as a function of $(R - R_c)/R_c$. The line in (b) has a slope of 0.56.

small discontinuity as the jet disappears, or whether our ability to produce a small jet is limited by the accuracy with which the outer pressure can be adjusted. Most importantly, in the opposed flow geometry we no longer see a dripping state, but we pass directly from a jetting state to a state of no flow.

3.3 Droplet clusters

Since the jet decays into droplets further downstream, the very thin jets produced in the opposed flow geometry allow us to make correspondingly smaller droplets, with hydroxyethyl cellulose polymers added to them. Owing to the short-range depletion attractions induced by HEC polymers, colloidal droplets with mean radius of $1.5 \mu\text{m}$ form clusters, as shown in the confocal images of Fig. 7(b)–(e). These enable studies in the same spirit as ref. 48, but with 3d imaging, as the system is refractive index matched. In Fig. 7(b)–(e) we show closeups of individual clusters with $N = 2$ – 5 particles; the wireframe inserts indicate the geometry of the cluster.

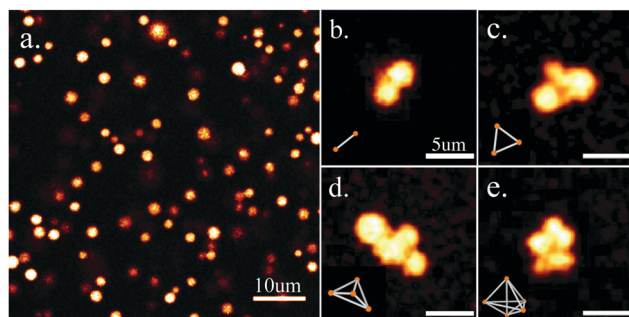


Fig. 7 Confocal microscopy images of collected droplets and clusters from the opposed flow focusing device. (a) Colloidal emulsion droplets with mean radius of $1.2 \mu\text{m}$, the scale bar represents $10 \mu\text{m}$. (b–e) Collected droplet clusters that are formed by depletion attraction of non-absorbing polymers HEC. Clusters contain droplets from $N = 2$ to $N = 5$, with wireframes indicating the geometry of clusters; scale bars represent $5 \mu\text{m}$.

Our new model system enables the study of near-frictionless droplets. Unlike systems with solid particles, where access to the thermodynamic ground state is often suppressed,^{49,52} perhaps due to the polymer stabilizer layer thickness being the same size as the depletion polymers,⁵³ these near-frictionless droplets may be better able to reach the ground state. The potential to generate smaller droplets with this method further enables us to form clusters with less tendency to sediment, and which may explore their configuration space very quickly, as the colloid diffusion time scales with the cube of the diameter. With a higher volume fraction of droplets, percolating colloidal gels can be obtained through the same depletion mechanism.^{54–56}

4 Conclusions

In conclusion, it remains difficult to make sub $10 \mu\text{m}$ droplets using conventional microfluidic methods, particularly in the case of oil-in-water systems. Here we have described a method to make colloidal oil droplets by tuning close to a second order transition, thereby reducing the droplet size by almost an order of magnitude. This was achieved by simply reversing the direction of the oil flow. With finer control over the relative pressures of inner and outer flow, one can approach even closer to the transition, our method therefore has the potential of reducing droplet size practically without limit. We demonstrate the utility of the droplets produced here *via* the production of colloidal clusters, an experimental system which is challenging to access otherwise. In addition to the many applications that colloidal clusters offer, we believe the phenomenon detailed above presents many opportunities for further development. Of primary interest would be a thorough investigation of the effect of angle on the droplet generation behaviour, as well investigating whether the same effect is suitable for the production of bubbles, a useful system with many biomedicine applications.⁵⁷

Conflicts of interest

There are no conflicts to declare.

Acknowledgements

J. D. acknowledges Bayer AG for financial support. M. M. acknowledges the EPSRC Doctoral training allowance EP/L504919/1, CPR acknowledges the Royal Society and Kyoto University SPIRITS fund, J. D. and CPR acknowledge the European Research Council (ERC consolidator grant NANOPRS, project number 617266) for financial support. EPSRC grant code EP/H022333/1 is acknowledged for provision of the confocal microscope used in this work. J. E. acknowledges support from the Leverhulme Trust through International Academic Fellowship IAF-2017-010. He also gratefully acknowledges discussions with J. K. Nunes, as well as helpful comments on the manuscript.

Notes and references

- 1 A. B. Theberge, F. Courtois, Y. Schaerli, M. Fischlechner, C. Abell, F. Hollfelder and W. T. Huck, *Angew. Chem., Int. Ed.*, 2010, **49**, 5846–5868.
- 2 C. Martino and A. J. deMello, *Interface Focus*, 2016, **6**, 20160011.
- 3 D. J. Beebe, G. A. Mensing and G. M. Walker, *Annu. Rev. Biomed. Eng.*, 2002, **4**, 261–286.
- 4 M. T. Guo, A. Rotem, J. A. Heyman and D. A. Weitz, *Lab Chip*, 2012, **12**, 2146.
- 5 C. Yi, C. W. Li, S. Ji and M. Yang, *Anal. Chim. Acta*, 2006, **560**, 1–23.
- 6 E. Delamarche, D. Juncker and H. Schmid, *Adv. Mater.*, 2005, **17**, 2911–2933.
- 7 M. Meissner, J. Dong, J. Eggers, A. M. Seddon and C. P. Royall, *Soft Matter*, 2017, **13**, 788–794.
- 8 N. Champagne, R. Vasseur, A. Montourcy and D. Bartolo, *Phys. Rev. Lett.*, 2010, **105**, 044502.
- 9 T. Thorsen, R. W. Roberts, F. H. Arnold and S. R. Quake, *Phys. Rev. Lett.*, 2001, **86**, 4163–4166.
- 10 A. M. Gañán-Calvo and J. M. Gordillo, *Phys. Rev. Lett.*, 2001, **87**, 274501.
- 11 S. L. Anna, N. Bontoux and H. A. Stone, *Appl. Phys. Lett.*, 2003, **82**, 364–366.
- 12 P. Garstecki, H. A. Stone and G. M. Whitesides, *Phys. Rev. Lett.*, 2005, **94**, 164501.
- 13 D. Link, S. L. Anna, D. Weitz and H. Stone, *Phys. Rev. Lett.*, 2004, **92**, 054503.
- 14 T. Nisisako, T. Torii and T. Higuchi, *Lab Chip*, 2002, **2**, 24–26.
- 15 T. Nisisako, S. Okushima and T. Torii, *Soft Matter*, 2005, **1**, 23–27.
- 16 M. F. Haase and J. Brujic, *Angew. Chem., Int. Ed.*, 2014, **53**, 11793–11797.
- 17 C. Cohen, R. Giles, V. Sergeeva, N. Mittal, P. Tabeling, D. Zerrouki, J. Baudry, J. Bibette and N. Bremond, *Microfluid. Nanofluid.*, 2014, **17**, 959–966.
- 18 D. Bardin, T. D. Martz, P. S. Sheeran, R. Shih, A. Dayton and A. P. Lee, *Lab Chip*, 2011, **11**, 3990–3998.
- 19 W. A. C. Bauer, J. Kotar, P. Cicuta, R. T. Woodward, J. V. M. Weaver and W. T. S. Huck, *Soft Matter*, 2011, **7**, 4214–4220.
- 20 J. M. Chen, M.-C. Kuo and C.-P. Liu, *Jpn. J. Appl. Phys.*, 2011, **50**, 107301.
- 21 A. J. Acero, N. Rebollo-Muñoz, J. M. Montanero, A. M. Gañán-Calvo and E. J. Vega, *J. Micromech. Microeng.*, 2013, **23**, 065009.
- 22 W. C. Jeong, J. M. Lim, J. H. Choi, J. H. Kim, Y. J. Lee, S. H. Kim, G. Lee, J. D. Kim, G. R. Yi and S. M. Yang, *Lab Chip*, 2012, **12**, 1446–1453.
- 23 A. M. Gañán-Calvo, R. González-Prieto, P. Riesco-Chueca, M. A. Herrada and M. Flores-Mosquera, *Nat. Phys.*, 2007, **3**, 737–742.
- 24 A. M. Gañán-Calvo, *Phys. Rev. Lett.*, 1997, **79**, 217–220.
- 25 M. A. Herrada, J. M. López-Herrera, A. M. Gañán-Calvo, E. J. Vega, J. M. Montanero and S. Popinet, *Phys. Rev. E: Stat., Nonlinear, Soft Matter Phys.*, 2012, **86**, 026305.
- 26 G. Taylor, *Proc. R. Soc.*, 1934, **29**, 71.
- 27 R. Suryo and O. A. Basaran, *Phys. Fluids*, 2006, **18**, 082102.
- 28 A. M. Gañán-Calvo, *Phys. Rev. E: Stat., Nonlinear, Soft Matter Phys.*, 2008, **78**, 026304.
- 29 W. W. Zhang, *Phys. Rev. Lett.*, 2004, **93**, 184502.
- 30 E. Castro-Hernández, F. Campo-Cortés and J. M. Gordillo, *J. Fluid Mech.*, 2012, **698**, 423–445.
- 31 S. L. Anna, *Annu. Rev. Fluid Mech.*, 2016, **48**, 285–309.
- 32 J. Eggers and E. Villermaux, *Rep. Prog. Phys.*, 2008, **71**, 036601.
- 33 I. Cohen and S. R. Nagel, *Phys. Rev. Lett.*, 2002, **88**, 074501.
- 34 S. C. Case and S. R. Nagel, *Phys. Rev. Lett.*, 2007, **98**, 114501.
- 35 N. Goldenfeld, *Lectures on phase transitions and the renormalization group*, Addison-Wesley, 1993.
- 36 S. J. Haward, R. J. Poole, M. A. Alves, P. J. Oliveira, N. Goldenfeld and A. Q. Shen, *Phys. Rev. E*, 2016, **93**, 031101.
- 37 A. M. Gañán-Calvo, *Appl. Phys. Lett.*, 2005, **86**, 214101.
- 38 S. L. Anna and H. C. Mayer, *Phys. Fluids*, 2006, **18**, 121512.
- 39 A. S. Utada, A. Fernandez-Nieves, H. A. Stone and D. A. Weitz, *Phys. Rev. Lett.*, 2007, **99**, 094502.
- 40 J. Chomaz, *Annu. Rev. Fluid Mech.*, 2005, **37**, 357–392.
- 41 A. S. Utada, A. Fernandez-Nieves, J. M. Gordillo and D. A. Weitz, *Phys. Rev. Lett.*, 2008, **100**, 014502.
- 42 G. I. Taylor, Proceedings of the 11th International Congress of Applied Mathematics, Munich (Germany), 1964, pp. 790–796.
- 43 J. D. Buckmaster, *J. Fluid Mech.*, 1972, **55**, 385.
- 44 F. Cruz-Mazo, M. A. Herrada, A. M. Gañán-Calvo and J. M. Montanero, *J. Fluid Mech.*, 2017, **832**, 329–344.
- 45 C. Likos, K. Vaynberg, H. Löwen and N. Wagner, *Langmuir*, 2000, **16**, 4100–4108.
- 46 A. Malins, S. R. Williams, J. Eggers and C. P. Royall, *J. Chem. Phys.*, 2013, **139**, 234506.
- 47 A. Malins, S. R. Williams, J. Eggers, H. Tanaka and C. P. Royall, *J. Phys.: Condens. Matter*, 2009, **21**, 425103.

- 48 G. Meng, N. Arkus, M. P. Brenner and V. N. Manoharan, *Science*, 2010, **327**, 560–563.
- 49 C. L. Klix, K. Murata, H. Tanaka, S. Williams, A. Malins and C. P. Royall, *Sci. Rep.*, 2013, **3**, 2072.
- 50 W. A. C. Bauer, M. Fischlechner, C. Abell and W. T. S. Huck, *Lab Chip*, 2010, **10**, 1814.
- 51 C. Carnero Ruiz, L. Díaz-López and J. Aguiar, *J. Dispersion Sci. Technol.*, 2008, **29**, 266–273.
- 52 C. Patrick Royall, *Soft Matter*, 2018, **14**, 4020–4028.
- 53 V. Prasad, V. Trappe, A. D. Dinsmore, P. N. Segre, L. Cipelletti and D. A. Weitz, *Faraday Discuss.*, 2003, **123**, 1–12.
- 54 E. Zaccarelli, *J. Phys.: Condens. Matter*, 2007, **19**, 323101.
- 55 S. Manley, J. M. Skotheim, L. Mahadevan and D. A. Weitz, *Phys. Rev. Lett.*, 2005, **94**, 218302.
- 56 S. Griffiths, F. Turci and C. P. Royall, *J. Chem. Phys.*, 2017, **146**, 014905.
- 57 K. Hettiarachchi and A. P. Lee, *J. Colloid Interface Sci.*, 2010, **344**, 521–527.