

Electric network for irreversible walks - but is it useful?

Work in progress, joint with
Áron Folly

Márton Balázs

University of Bristol

30 October, 2013.

Reversible chains and resistors

- Reducing a network

- Thomson, Dirichlet principles

- Monotonicity, transience, recurrence

Irreversible chains and electric networks

- The part

- From network to chain

- From chain to network

- Effective resistance

- What works

The electric network

- Reducing the network

- Nonmonotonicity

- What doesn't work

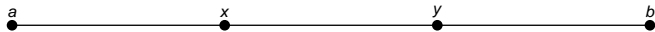
Reversible chains and resistors

Irreducible Markov chain: on Ω , $a \neq b$, $x \in \Omega$,

$$h_x := \mathbf{P}_x\{\tau_a < \tau_b\} \quad (\tau \text{ is the hitting time})$$

is **harmonic**:

$$h_x = \sum_y P_{xy} h_y, \quad h_a = 1, \quad h_b = 0.$$



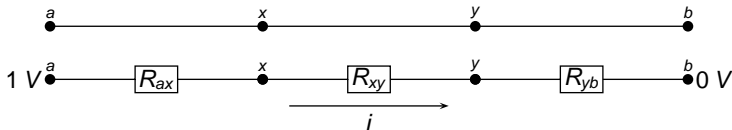
Reversible chains and resistors

Irreducible Markov chain: on Ω , $a \neq b$, $x \in \Omega$,

$$h_x := \mathbf{P}_x\{\tau_a < \tau_b\} \quad (\tau \text{ is the hitting time})$$

is **harmonic**:

$$h_x = \sum_y P_{xy} h_y, \quad h_a = 1, \quad h_b = 0.$$



Electric resistor network: the voltage u is **harmonic** ($C = 1/R$):

$$u_x = \sum_y \frac{C_{xy}}{\sum_z C_{xz}} \cdot u_y; \quad u_a = 1, \quad u_b = 0.$$

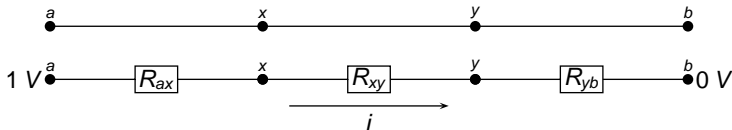
Reversible chains and resistors

Irreducible Markov chain: on Ω , $a \neq b$, $x \in \Omega$,

$$h_x := \mathbf{P}_x\{\tau_a < \tau_b\} \quad (\tau \text{ is the hitting time})$$

is **harmonic**:

$$h_x = \sum_y P_{xy} h_y, \quad h_a = 1, \quad h_b = 0.$$



Electric resistor network: the voltage u is **harmonic** ($C = 1/R$):

$$u_x = \sum_y \frac{C_{xy}}{\sum_z C_{xz}} \cdot u_y; \quad u_a = 1, \quad u_b = 0.$$

Reversible chains and resistors

Thus,

$$P_{xy} = \frac{C_{xy}}{\sum_z C_{xz}} =: \frac{C_{xy}}{C_x}.$$

Reversible chains and resistors

Thus,

$$P_{xy} = \frac{C_{xy}}{\sum_z C_{xz}} =: \frac{C_{xy}}{C_x}.$$

$$P_{xy} = C_{xy}/C_x$$

Reversible chains and resistors

Thus,

$$P_{xy} = \frac{C_{xy}}{\sum_z C_{xz}} =: \frac{C_{xy}}{C_x}.$$

$$P_{xy} = C_{xy}/C_x$$

Reversible chains and resistors

Thus,

$$P_{xy} = \frac{C_{xy}}{\sum_z C_{xz}} =: \frac{C_{xy}}{C_x}.$$

Stationary distribtuion:

$$\mu_x = \sum_y \mu_y P_{yx} = \sum_y \mu_y \frac{C_{xy}}{C_y}$$

$$C_x = \sum_y C_y \frac{C_{xy}}{C_y}$$

$$P_{xy} = C_{xy}/C_x$$

Reversible chains and resistors

Thus,

$$P_{xy} = \frac{C_{xy}}{\sum_z C_{xz}} =: \frac{C_{xy}}{C_x}.$$

Stationary distribution:

$$\mu_x = \sum_y \mu_y P_{yx} = \sum_y \mu_y \frac{C_{xy}}{C_y}$$

$$C_x = \sum_y C_y \frac{C_{xy}}{C_y}$$

$$\rightsquigarrow C_x = \mu_x.$$

$$P_{xy} = C_{xy}/C_x$$

Reversible chains and resistors

Thus,

$$P_{xy} = \frac{C_{xy}}{\sum_z C_{xz}} =: \frac{C_{xy}}{C_x}.$$

Stationary distribution:

$$\mu_x = \sum_y \mu_y P_{yx} = \sum_y \mu_y \frac{C_{xy}}{C_y}$$

$$C_x = \sum_y C_y \frac{C_{xy}}{C_y}$$

$$\rightsquigarrow C_x = \mu_x.$$

$$P_{xy} = C_{xy}/C_x$$

$$C_x = \mu_x$$

Reversible chains and resistors

Thus,

$$P_{xy} = \frac{C_{xy}}{\sum_z C_{xz}} =: \frac{C_{xy}}{C_x}.$$

Stationary distribution:

$$\mu_x = \sum_y \mu_y P_{yx} = \sum_y \mu_y \frac{C_{xy}}{C_y}$$

$$C_x = \sum_y C_y \frac{C_{xy}}{C_y}$$

$$\rightsquigarrow C_x = \mu_x.$$

Notice $\mu_x P_{xy} = C_{xy} = C_{yx} = \mu_y P_{yx}$, so **the chain is reversible** in this case.

$$P_{xy} = C_{xy}/C_x$$

$$C_x = \mu_x$$

Reversible chains and resistors

Let $n_x = \mathbf{E}_a$ (number of visits to x before absorbed in b). Then

$$n_x = \sum_y n_y P_{yx} = \sum_y \frac{C_{xy}}{C_y} n_y$$

$$P_{xy} = C_{xy}/C_x$$

$$C_x = \mu_x$$

Reversible chains and resistors

Let $n_x = \mathbf{E}_a$ (number of visits to x before absorbed in b). Then

$$n_x = \sum_y n_y P_{yx} = \sum_y \frac{C_{xy}}{C_y} n_y$$

$$u_x = \sum_y \frac{C_{xy}}{C_x} \cdot u_y$$

Reversible chains and resistors

Let $n_x = \mathbf{E}_a$ (number of visits to x before absorbed in b). Then

$$n_x = \sum_y n_y P_{yx} = \sum_y \frac{C_{xy}}{C_y} n_y$$

$$u_x = \sum_y \frac{C_{xy}}{C_x} \cdot u_y$$

$$u_x C_x = \sum_y \frac{C_{xy}}{C_y} \cdot u_y C_y$$

Reversible chains and resistors

Let $n_x = \mathbf{E}_a$ (number of visits to x before absorbed in b). Then

$$n_x = \sum_y n_y P_{yx} = \sum_y \frac{C_{xy}}{C_y} n_y$$

$$u_x = \sum_y \frac{C_{xy}}{C_x} \cdot u_y$$

$$u_x C_x = \sum_y \frac{C_{xy}}{C_y} \cdot u_y C_y$$

$$\rightsquigarrow u_x C_x = n_x.$$

Reversible chains and resistors

Let $n_x = \mathbf{E}_a$ (number of visits to x before absorbed in b). Then

$$n_x = \sum_y n_y P_{yx} = \sum_y \frac{C_{xy}}{C_y} n_y$$

$$u_x = \sum_y \frac{C_{xy}}{C_x} \cdot u_y$$

$$u_x C_x = \sum_y \frac{C_{xy}}{C_y} \cdot u_y C_y$$

$$\rightsquigarrow u_x C_x = n_x.$$

\mathbf{E}_a (signed current $x \rightarrow y$ before absorbed in b)

$$= n_x P_{xy} - n_y P_{yx} = (u_x - u_y) C_{xy} = i_{xy}. \quad \text{normalisation...}$$

$$P_{xy} = C_{xy}/C_x$$

$$C_x = \mu_x$$

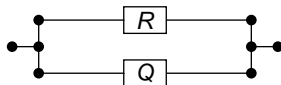
Reducing a network

Series:



$$R_{\text{eff}} = R + Q$$

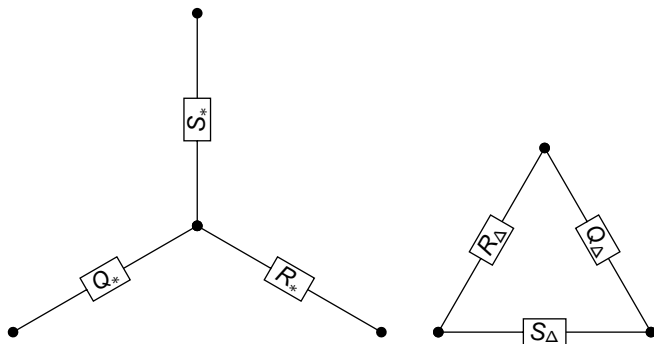
Parallel:



$$\frac{1}{R_{\text{eff}}} = \frac{1}{R} + \frac{1}{Q}$$

Reducing a network

Star-Delta:

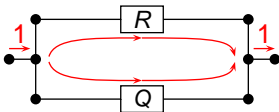


$$R_* = \frac{Q_\Delta S_\Delta}{R_\Delta + Q_\Delta + S_\Delta},$$

$$R_\Delta = \frac{R_* Q_* + R_* S_* + Q_* S_*}{R_*}.$$

Thomson, Dirichlet principles

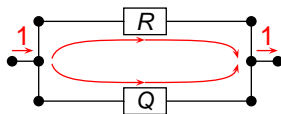
Thomson principle:



The physical unit current is the unit flow that minimizes the sum of the ohmic power losses $i^2 R$.

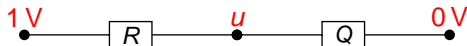
Thomson, Dirichlet principles

Thomson principle:



The physical unit current is the unit flow that minimizes the sum of the ohmic power losses $i^2 R$.

Dirichlet principle:



The physical voltage is the function that minimizes the ohmic power losses $(\nabla u)^2 / R$.

Monotonicity, transience, recurrence

The monotonicity property:

Between any disjoint sets of vertices, the effective resistance is a non-decreasing function of the individual resistances.

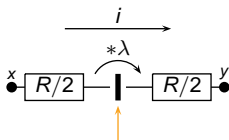
Monotonicity, transience, recurrence

The monotonicity property:

Between any disjoint sets of vertices, the effective resistance is a non-decreasing function of the individual resistances.

\rightsquigarrow can be used to prove transience-recurrence by reducing the graph to something manageable in terms of resistor networks.

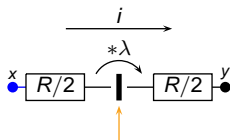
The part



Voltage amplifier: keeps the current, multiplies the potential.

$$\left(u_x - i \cdot \frac{R}{2}\right) \cdot \lambda - i \cdot \frac{R}{2} = u_y$$

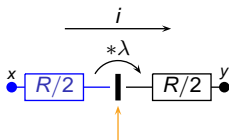
The part



Voltage amplifier: keeps the current, multiplies the potential.

$$\left(u_x - i \cdot \frac{R}{2}\right) \cdot \lambda - i \cdot \frac{R}{2} = u_y$$

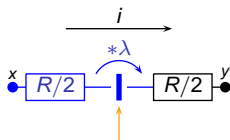
The part



Voltage amplifier: keeps the current, multiplies the potential.

$$\left(u_x - i \cdot \frac{R}{2}\right) \cdot \lambda - i \cdot \frac{R}{2} = u_y$$

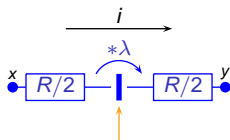
The part



Voltage amplifier: keeps the current, multiplies the potential.

$$\left(u_x - i \cdot \frac{R}{2}\right) \cdot \lambda - i \cdot \frac{R}{2} = u_y$$

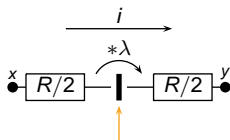
The part



Voltage amplifier: keeps the current, multiplies the potential.

$$\left(u_x - i \cdot \frac{R}{2}\right) \cdot \lambda - i \cdot \frac{R}{2} = u_y$$

The part



Voltage amplifier: keeps the current, multiplies the potential.

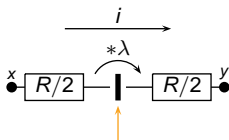
$$(u_x - i \cdot \frac{R}{2}) \cdot \lambda - i \cdot \frac{R}{2} = u_y$$

Equivalent:

$$(u_x - i \cdot R^{pr}) \cdot \lambda^{pr} = u_y$$

$$u_x \cdot \lambda^{se} - R^{se} \cdot i = u_y$$

The part



Voltage amplifier: keeps the current, multiplies the potential.

$$(u_x - i \cdot \frac{R}{2}) \cdot \lambda - i \cdot \frac{R}{2} = u_y$$

Equivalent:

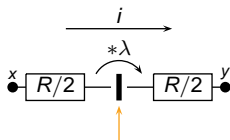
$$(u_x - i \cdot R^{pr}) \cdot \lambda^{pr} = u_y$$

$$\lambda^{pr} = \lambda$$

$$u_x \cdot \lambda^{se} - R^{se} \cdot i = u_y$$

$$\lambda^{se} = \lambda$$

The part



Voltage amplifier: keeps the current, multiplies the potential.

$$(u_x - i \cdot \frac{R}{2}) \cdot \lambda - i \cdot \frac{R}{2} = u_y$$

Equivalent:

$$(u_x - i \cdot R^{pr}) \cdot \lambda^{pr} = u_y$$

$$\lambda^{pr} = \lambda$$

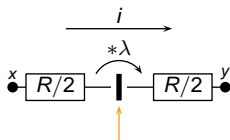
$$R^{pr} = \frac{\lambda+1}{2\lambda} \cdot R$$

$$u_x \cdot \lambda^{se} - R^{se} \cdot i = u_y$$

$$\lambda^{se} = \lambda$$

$$R^{se} = \frac{\lambda+1}{2} \cdot R$$

The part



Voltage amplifier: keeps the current, multiplies the potential.

$$(u_x - i \cdot \frac{R}{2}) \cdot \lambda - i \cdot \frac{R}{2} = u_y$$

Equivalent:

$$(u_x - i \cdot R^{\text{pr}}) \cdot \lambda^{\text{pr}} = u_y$$

$$\lambda^{\text{pr}} = \lambda$$

$$R^{\text{pr}} = \frac{\lambda+1}{2\lambda} \cdot R$$

$$u_x \cdot \lambda^{\text{se}} - R^{\text{se}} \cdot i = u_y$$

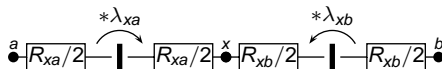
$$\lambda^{\text{se}} = \lambda$$

$$R^{\text{se}} = \frac{\lambda+1}{2} \cdot R$$

$$R^{\text{pr}} = \frac{\lambda+1}{2\lambda} \cdot R$$

$$R^{\text{se}} = \frac{\lambda+1}{2} \cdot R$$

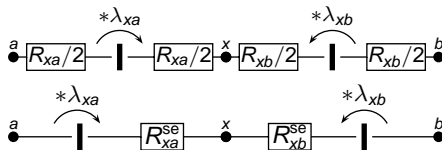
Harmonicity



$$R^{\text{pr}} = \frac{\lambda+1}{2\lambda} \cdot R$$

$$R^{\text{se}} = \frac{\lambda+1}{2} \cdot R$$

Harmonicity

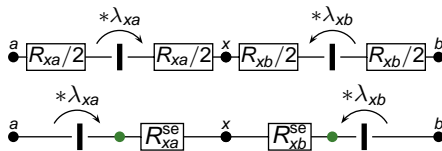


$$u_x = \sum_y \frac{C_{xy}^{se}}{\sum_z C_{xz}^{se}} \cdot \lambda_{xy} u_y$$

$$R^{pr} = \frac{\lambda+1}{2\lambda} \cdot R$$

$$R^{se} = \frac{\lambda+1}{2} \cdot R$$

Harmonicity

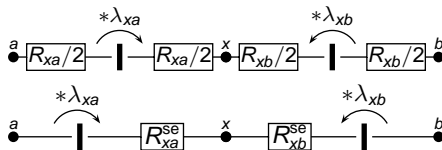


$$U_x = \sum_y \frac{C_{xy}^{se}}{\sum_z C_{xz}^{se}} \cdot \lambda_{xy} U_y$$

$$R^{pr} = \frac{\lambda+1}{2\lambda} \cdot R$$

$$R^{se} = \frac{\lambda+1}{2} \cdot R$$

Harmonicity

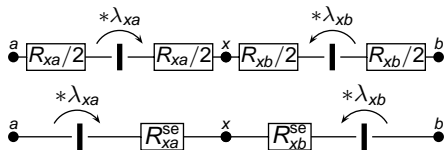


$$u_x = \sum_y \frac{C_{xy}^{se}}{\sum_z C_{xz}^{se}} \cdot \lambda_{xy} u_y$$

$$R^{pr} = \frac{\lambda+1}{2\lambda} \cdot R$$

$$R^{se} = \frac{\lambda+1}{2} \cdot R$$

Harmonicity



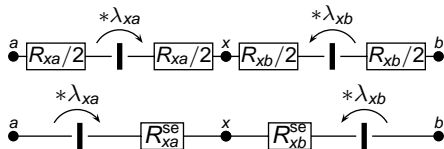
$$\begin{aligned}
 u_x &= \sum_y \frac{C_{xy}^{se}}{\sum_z C_{xz}^{se}} \cdot \lambda_{xy} u_y = \sum_y \frac{C_{xy} \frac{2}{\lambda_{xy} + 1}}{\sum_z C_{xz} \frac{2}{\lambda_{xz} + 1}} \cdot \lambda_{xy} u_y \\
 &= \sum_y \frac{D_{xy} \gamma_{xy}}{\sum_z D_{xz} \gamma_{zx}} \cdot u_y = \sum_y \frac{D_{xy} \gamma_{xy}}{D_x} \cdot u_y
 \end{aligned}$$

with $\gamma_{xy} = \sqrt{\lambda_{xy}} = 1/\gamma_{yx}$, $D_{xy} = 2\gamma_{xy} C_{xy}/(\lambda_{xy} + 1) = D_{yx}$.

$$R^{pr} = \frac{\lambda+1}{2\lambda} \cdot R$$

$$R^{se} = \frac{\lambda+1}{2} \cdot R$$

Harmonicity



$$\begin{aligned}
 u_x &= \sum_y \frac{C_{xy}^{se}}{\sum_z C_{xz}^{se}} \cdot \lambda_{xy} u_y = \sum_y \frac{C_{xy} \frac{2}{\lambda_{xy} + 1}}{\sum_z C_{xz} \frac{2}{\lambda_{xz} + 1}} \cdot \lambda_{xy} u_y \\
 &= \sum_y \frac{D_{xy} \gamma_{xy}}{\sum_z D_{xz} \gamma_{zx}} \cdot u_y = \sum_y \frac{D_{xy} \gamma_{xy}}{D_x} \cdot u_y
 \end{aligned}$$

with $\gamma_{xy} = \sqrt{\lambda_{xy}} = 1/\gamma_{yx}$, $D_{xy} = 2\gamma_{xy} C_{xy}/(\lambda_{xy} + 1) = D_{yx}$.

$$\gamma_{xy} = \sqrt{\lambda_{xy}} \quad D_x = \sum_z D_{xz} \gamma_{zx} \quad D_{xy} = 2\gamma_{xy} C_{xy}/(\lambda_{xy} + 1)$$

From network to chain

Irreducible Markov chain: on Ω , $a \neq b$, $x \in \Omega$,

$$h_x := \mathbf{P}_x\{\tau_a < \tau_b\} \quad (\tau \text{ is the hitting time})$$

is **harmonic**:

$$h_x = \sum_y P_{xy} h_y, \quad h_a = 1, \quad h_b = 0.$$

$$u_x = \sum_y \frac{D_{xy} \gamma_{xy}}{D_x} \cdot u_y, \quad u_a = 1, \quad u_b = 0.$$

$$\gamma_{xy} = \sqrt{\lambda_{xy}} \quad D_x = \sum_z D_{xz} \gamma_{zx} \quad D_{xy} = 2\gamma_{xy} C_{xy} / (\lambda_{xy} + 1)$$

From network to chain

Irreducible Markov chain: on Ω , $a \neq b$, $x \in \Omega$,

$$h_x := \mathbf{P}_x\{\tau_a < \tau_b\} \quad (\tau \text{ is the hitting time})$$

is **harmonic**:

$$h_x = \sum_y P_{xy} h_y, \quad h_a = 1, \quad h_b = 0.$$

$$u_x = \sum_y \frac{D_{xy} \gamma_{xy}}{D_x} \cdot u_y, \quad u_a = 1, \quad u_b = 0.$$

$$P_{xy} = \frac{D_{xy} \gamma_{xy}}{D_x}.$$

$$\gamma_{xy} = \sqrt{\lambda_{xy}} \quad D_x = \sum_z D_{xz} \gamma_{zx} \quad D_{xy} = 2\gamma_{xy} C_{xy} / (\lambda_{xy} + 1)$$

From network to chain

Irreducible Markov chain: on Ω , $a \neq b$, $x \in \Omega$,

$$h_x := \mathbf{P}_x\{\tau_a < \tau_b\} \quad (\tau \text{ is the hitting time})$$

is **harmonic**:

$$h_x = \sum_y P_{xy} h_y, \quad h_a = 1, \quad h_b = 0.$$

$$u_x = \sum_y \frac{D_{xy} \gamma_{xy}}{D_x} \cdot u_y, \quad u_a = 1, \quad u_b = 0.$$

$$P_{xy} = \frac{D_{xy} \gamma_{xy}}{D_x}.$$

$$\gamma_{xy} = \sqrt{\lambda_{xy}} \quad D_x = \sum_z D_{xz} \gamma_{zx} \quad D_{xy} = 2\gamma_{xy} C_{xy} / (\lambda_{xy} + 1)$$

$$P_{xy} = D_{xy} \gamma_{xy} / D_x$$

Markov property

$$u_x = \sum_z P_{xz} u_z; \quad \sum_z P_{xz} = 1$$

$u_x \equiv \text{const.}$ is a solution of the network with no external sources. This is now nontrivial.

$$\gamma_{xy} = \sqrt{\lambda_{xy}} \quad D_x = \sum_z D_{xz} \gamma_{zx}$$

$$P_{xy} = D_{xy} \gamma_{xy} / D_x$$

$$D_{xy} = 2\gamma_{xy} C_{xy} / (\lambda_{xy} + 1)$$

Markov property

$$u_x = \sum_z P_{xz} u_z; \quad \sum_z P_{xz} = 1$$

$u_x \equiv \text{const.}$ is a solution of the network with no external sources. This is now nontrivial.

$$\sum_z P_{xz} = \sum_z \frac{D_{xz} \gamma_{xz}}{D_x} = 1$$

$$D_x := \sum_z D_{xz} \gamma_{zx} = \sum_y D_{xy} \gamma_{xz}.$$

$$\gamma_{xy} = \sqrt{\lambda_{xy}} \quad D_x = \sum_z D_{xz} \gamma_{zx}$$

$$D_{xy} = 2\gamma_{xy} C_{xy} / (\lambda_{xy} + 1)$$

$$P_{xy} = D_{xy} \gamma_{xy} / D_x$$

Markov property

$$u_x = \sum_z P_{xz} u_z; \quad \sum_z P_{xz} = 1$$

$u_x \equiv \text{const.}$ is a solution of the network with no external sources. This is now nontrivial.

$$\sum_z P_{xz} = \sum_z \frac{D_{xz} \gamma_{xz}}{D_x} = 1$$

$$D_x := \sum_z D_{xz} \gamma_{zx} = \sum_y D_{xy} \gamma_{xz}.$$

$$\gamma_{xy} = \sqrt{\lambda_{xy}} \quad D_x = \sum_z D_{xz} \gamma_{zx} = \sum_z D_{xz} \gamma_{xz} \quad D_{xy} = 2\gamma_{xy} C_{xy} / (\lambda_{xy} + 1)$$

$$P_{xy} = D_{xy} \gamma_{xy} / D_x$$

From network to chain

Stationary distribtuion:

$$\mu_x = \sum_z \mu_z P_{zx} = \sum_z \mu_z \frac{D_{zx} \gamma_{zx}}{D_z}$$

$$D_x = \sum_z D_z \frac{D_{zx} \gamma_{zx}}{D_z}$$

$$\gamma_{xy} = \sqrt{\lambda_{xy}} \quad D_x = \sum_z D_{xz} \gamma_{zx} = \sum_z D_{xz} \gamma_{xz} \quad D_{xy} = 2\gamma_{xy} C_{xy} / (\lambda_{xy} + 1)$$

$$P_{xy} = D_{xy} \gamma_{xy} / D_x$$

From network to chain

Stationary distribtuion:

$$\mu_x = \sum_z \mu_z P_{zx} = \sum_z \mu_z \frac{D_{zx} \gamma_{zx}}{D_z}$$

$$D_x = \sum_z D_z \frac{D_{zx} \gamma_{zx}}{D_z}$$

$$\rightsquigarrow D_x = \mu_x.$$

$$\gamma_{xy} = \sqrt{\lambda_{xy}} \quad D_x = \sum_z D_{xz} \gamma_{zx} = \sum_z D_{xz} \gamma_{xz} \quad D_{xy} = 2\gamma_{xy} C_{xy} / (\lambda_{xy} + 1)$$

$$P_{xy} = D_{xy} \gamma_{xy} / D_x$$

From chain to network

$$P_{xy} = \frac{D_{xy}\gamma_{xy}}{D_x} = \frac{D_{xy}\gamma_{xy}}{\mu_x}$$

$$\mu_x P_{xy} \cdot \mu_y P_{yx} = D_{xy}^2;$$

$$\frac{\mu_x P_{xy}}{\mu_y P_{yx}} = \gamma_{xy}^2 = \lambda_{xy}.$$

$$\gamma_{xy} = \sqrt{\lambda_{xy}} \quad D_x = \sum_z D_{xz}\gamma_{zx} = \sum_z D_{xz}\gamma_{xz} \quad D_{xy} = 2\gamma_{xy}C_{xy}/(\lambda_{xy} + 1)$$

$$P_{xy} = D_{xy}\gamma_{xy}/D_x$$

From chain to network

$$P_{xy} = \frac{D_{xy}\gamma_{xy}}{D_x} = \frac{D_{xy}\gamma_{xy}}{\mu_x}$$

$$\mu_x P_{xy} \cdot \mu_y P_{yx} = D_{xy}^2;$$

$$\frac{\mu_x P_{xy}}{\mu_y P_{yx}} = \gamma_{xy}^2 = \lambda_{xy}.$$

Reversed chain: Replace P_{xy} by $\hat{P}_{xy} = P_{yx} \cdot \frac{\mu_y}{\mu_x}$.

\rightsquigarrow D_{xy} stays, λ_{xy} reverses to λ_{yx} .

$$\gamma_{xy} = \sqrt{\lambda_{xy}} \quad D_x = \sum_z D_{xz}\gamma_{zx} = \sum_z D_{xz}\gamma_{xz} \quad D_{xy} = 2\gamma_{xy}C_{xy}/(\lambda_{xy} + 1)$$

$$P_{xy} = D_{xy}\gamma_{xy}/D_x$$

From chain to network

Let $n_x = \mathbf{E}_a$ (number of visits to x before absorbed in b). Then

$$n_x = \sum_y n_y P_{yx} = \sum_y \frac{D_{yx} \gamma_{yx}}{D_y} n_y$$

$$\gamma_{xy} = \sqrt{\lambda_{xy}} \quad D_x = \sum_z D_{xz} \gamma_{zx} = \sum_z D_{xz} \gamma_{xz} \quad D_{xy} = 2\gamma_{xy} C_{xy} / (\lambda_{xy} + 1)$$

$$P_{xy} = D_{xy} \gamma_{xy} / D_x$$

From chain to network

Let $n_x = \mathbf{E}_a$ (number of visits to x before absorbed in b). Then

$$n_x = \sum_y n_y P_{yx} = \sum_y \frac{D_{yx} \gamma_{yx}}{D_y} n_y$$

$$u_x = \sum_y \frac{D_{xy} \gamma_{xy}}{D_x} \cdot u_y$$

$$\gamma_{xy} = \sqrt{\lambda_{xy}} \quad D_x = \sum_z D_{xz} \gamma_{zx} = \sum_z D_{xz} \gamma_{xz} \quad D_{xy} = 2\gamma_{xy} C_{xy} / (\lambda_{xy} + 1)$$

$$P_{xy} = D_{xy} \gamma_{xy} / D_x$$

From chain to network

Let $n_x = \mathbf{E}_a$ (number of visits to x before absorbed in b). Then

$$n_x = \sum_y n_y P_{yx} = \sum_y \frac{D_{yx} \gamma_{yx}}{D_y} n_y$$

$$u_x = \sum_y \frac{D_{xy} \gamma_{xy}}{D_x} \cdot u_y$$

$$u_x D_x = \sum_y \frac{D_{xy} \gamma_{xy}}{D_y} \cdot u_y D_y$$

$$\gamma_{xy} = \sqrt{\lambda_{xy}} \quad D_x = \sum_z D_{xz} \gamma_{zx} = \sum_z D_{xz} \gamma_{xz} \quad D_{xy} = 2\gamma_{xy} C_{xy} / (\lambda_{xy} + 1)$$

$$P_{xy} = D_{xy} \gamma_{xy} / D_x$$

From chain to network

Let $n_x = \mathbf{E}_a$ (number of visits to x before absorbed in b). Then

$$n_x = \sum_y n_y P_{yx} = \sum_y \frac{D_{yx} \gamma_{yx}}{D_y} n_y$$

$$u_x = \sum_y \frac{D_{xy} \gamma_{xy}}{D_x} \cdot u_y$$

$$u_x D_x = \sum_y \frac{D_{xy} \gamma_{xy}}{D_y} \cdot u_y D_y$$

$$\rightsquigarrow \hat{u}_x D_x = n_x$$

in the reversed chain.

$$\gamma_{xy} = \sqrt{\lambda_{xy}} \quad D_x = \sum_z D_{xz} \gamma_{zx} = \sum_z D_{xz} \gamma_{xz} \quad D_{xy} = 2\gamma_{xy} C_{xy} / (\lambda_{xy} + 1)$$

$$P_{xy} = D_{xy} \gamma_{xy} / D_x$$

From chain to network

Let $n_x = \mathbf{E}_a$ (number of visits to x before absorbed in b). Then

$$\rightsquigarrow \hat{u}_x D_x = n_x$$

in the reversed chain.

\mathbf{E}_a (signed current $x \rightarrow y$ before absorbed in b)

$$= n_x P_{xy} - n_y P_{yx} = (\hat{u}_x \gamma_{xy} - \hat{u}_y \gamma_{yx}) D_{xy} = \hat{i}_{xy}. \quad \text{normalisation...}$$

$$\gamma_{xy} = \sqrt{\lambda_{xy}} \quad D_x = \sum_z D_{xz} \gamma_{zx} = \sum_z D_{xz} \gamma_{xz} \quad D_{xy} = 2\gamma_{xy} C_{xy} / (\lambda_{xy} + 1)$$

$$P_{xy} = D_{xy} \gamma_{xy} / D_x$$

Effective resistance

Suppose u_a, u_b given, the solution is $\{u_x\}_{x \in \Omega}$ and $\{i_{xy}\}_{x \sim y \in \Omega}$.

Current

$$i_a = \sum_{x \sim a} i_{ax}$$

flows in the network at a .

Effective resistance

Suppose u_a, u_b given, the solution is $\{u_x\}_{x \in \Omega}$ and $\{i_{xy}\}_{x \sim y \in \Omega}$.

Current

$$i_a = \sum_{x \sim a} i_{ax}$$

flows in the network at a .

\rightsquigarrow **The Markov property** has another solution: constant u_b potentials with zero external currents.

Effective resistance

Suppose u_a, u_b given, the solution is $\{u_x\}_{x \in \Omega}$ and $\{i_{xy}\}_{x \sim y \in \Omega}$.

Current

$$i_a = \sum_{x \sim a} i_{ax}$$

flows in the network at a .

\rightsquigarrow **The Markov property** has another solution: constant u_b potentials with zero external currents.

\rightsquigarrow The difference of these two: $\{u_x - u_b\}_{x \in \Omega}$ is a solution too, with i_a flowing in the network.

Effective resistance

Suppose u_a, u_b given, the solution is $\{u_x\}_{x \in \Omega}$ and $\{i_{xy}\}_{x \sim y \in \Omega}$.

Current

$$i_a = \sum_{x \sim a} i_{ax}$$

flows in the network at a .

↪ **The Markov property** has another solution: constant u_b potentials with zero external currents.

↪ The difference of these two: $\{u_x - u_b\}_{x \in \Omega}$ is a solution too, with i_a flowing in the network.

↪ Going backwards from $u_b - u_b = 0$ at b , all currents and potentials are proportional to $u_a - u_b$ at a .

Effective resistance

Suppose u_a, u_b given, the solution is $\{u_x\}_{x \in \Omega}$ and $\{i_{xy}\}_{x \sim y \in \Omega}$.

Current

$$i_a = \sum_{x \sim a} i_{ax}$$

flows in the network at a .

↪ **The Markov property** has another solution: constant u_b potentials with zero external currents.

↪ The difference of these two: $\{u_x - u_b\}_{x \in \Omega}$ is a solution too, with i_a flowing in the network.

↪ Going backwards from $u_b - u_b = 0$ at b , all currents and potentials are proportional to $u_a - u_b$ at a .

↪ In particular, i_a is proportional to $u_a - u_b$. **We have effective resistance.**

What works

... the analogy with $\mathbf{P}\{\tau_a < \tau_b\}$.

What works

... the analogy with $\mathbf{P}\{\tau_a < \tau_b\}$.

Modulo normalisation...

$$\mathbf{E}_a(\text{signed current } x \rightarrow y \text{ before absorbed in } b) = \hat{i}_{xy}.$$

in the reversed network!

What works

... the analogy with $\mathbf{P}\{\tau_a < \tau_b\}$.

Modulo normalisation...

$$\mathbf{E}_a(\text{signed current } x \rightarrow y \text{ before absorbed in } b) = \hat{i}_{xy}.$$

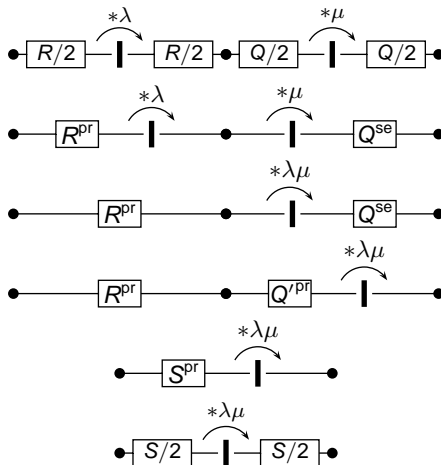
in the reversed network!

Theorem

Commute time = R_{eff} · all conductances.

The electric network

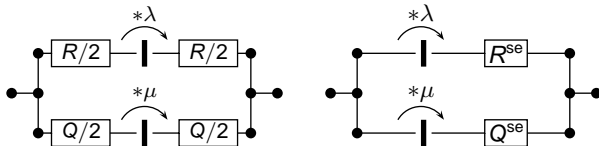
Series:



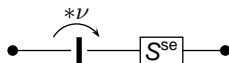
$$S = R \frac{(\lambda + 1)\mu}{\lambda\mu + 1} + Q \frac{\mu + 1}{\lambda\mu + 1}.$$

The electric network

Parallel:



Compare this with



$$S = \frac{RQ}{R + Q}$$

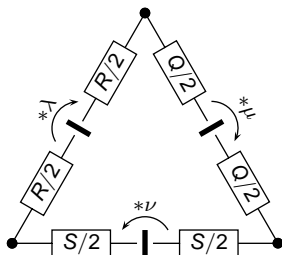
$$\nu = \frac{Q\lambda(\mu + 1) + R\mu(\lambda + 1)}{Q(\mu + 1) + R(\lambda + 1)}$$

The electric network

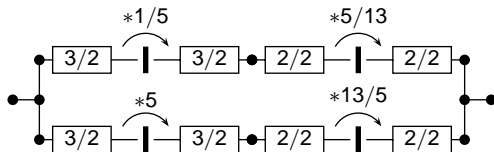
Star-Delta:

Star to Delta works,

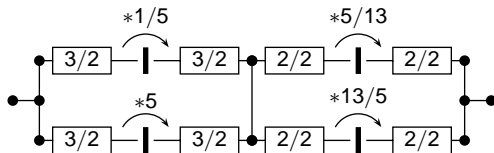
Delta to star only works if Delta does not produce a circular current by itself ($\lambda\mu\nu = 1$).



Nonmonotonicity



$$R_{\text{eff}} = \frac{27}{14}.$$



$$R_{\text{eff}} = \frac{5}{2} = \frac{35}{14}.$$

What doesn't work

Thomson, Dirichlet principle directly. In fact we couldn't find an appropriate energy functional.

What doesn't work

Thomson, Dirichlet principle directly. In fact we couldn't find an appropriate energy functional.

Monotonicity, which would be essential for recurrence-transience. Nothing we looked at is monotone.

What doesn't work

Thomson, Dirichlet principle directly. In fact we couldn't find an appropriate energy functional.

Monotonicity, which would be essential for recurrence-transience. Nothing we looked at is monotone.

But: Alexandre Gaudillièrè, Claudio Landim / Martin Slowik found the Dirichlet / Thomson principles for non-reversible chains. Translation to electric networks in progress...

What doesn't work

Thomson, Dirichlet principle directly. In fact we couldn't find an appropriate energy functional.

Monotonicity, which would be essential for recurrence-transience. Nothing we looked at is monotone.

But: Alexandre Gaudillière, Claudio Landim / Martin Slowik found the Dirichlet / Thomson principles for non-reversible chains. Translation to electric networks in progress...

Thank you.