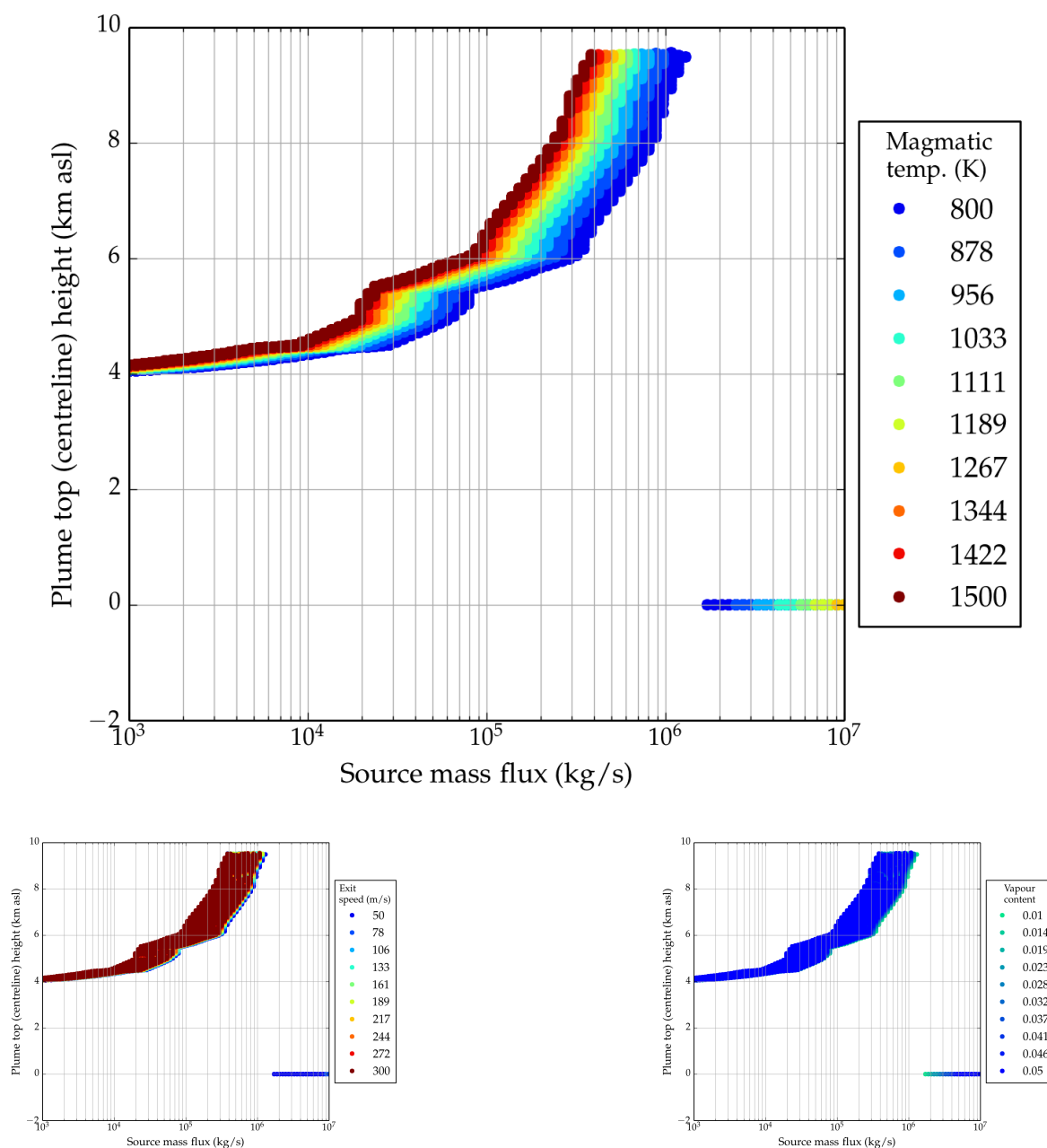


PlumeRise – The University of Bristol wind-blown plume model

Atmospheric conditions taken from WMO station 96935 on 2018 / 04 / 01 at 1200 UTC.

Note, this run was performed automatically and has not been checked.



This is not an official forecast.

This PlumeRise output was produced at the University of Bristol.

This PlumeRise output is not intended for public use. You must obtain professional or specialist advice before taking or refraining from any action on the basis of your use of the product.

The University makes no representations, warranties or guaranties, whether express or implied, that the product is accurate complete or up to date.

PlumeRise received funding from the University of Bristol, NERC through project Vanaheim, and the EU through project FutureVolc.

plumerise-info@bristol.ac.uk

Location information

Volcano name: Rinjani

Location: 8.42° S, 116.47° W

Elevation: 3726 m

Met station name: WRSJ Surabaya

Met station number: 96935

Met station location: 7.36° S, 112.76° W

Met station elevation: 3.0 m

Distance from volcano to met station: 425 km

Data from Smithsonian Institution Global Volcanism Program and Wyoming Weather Web.